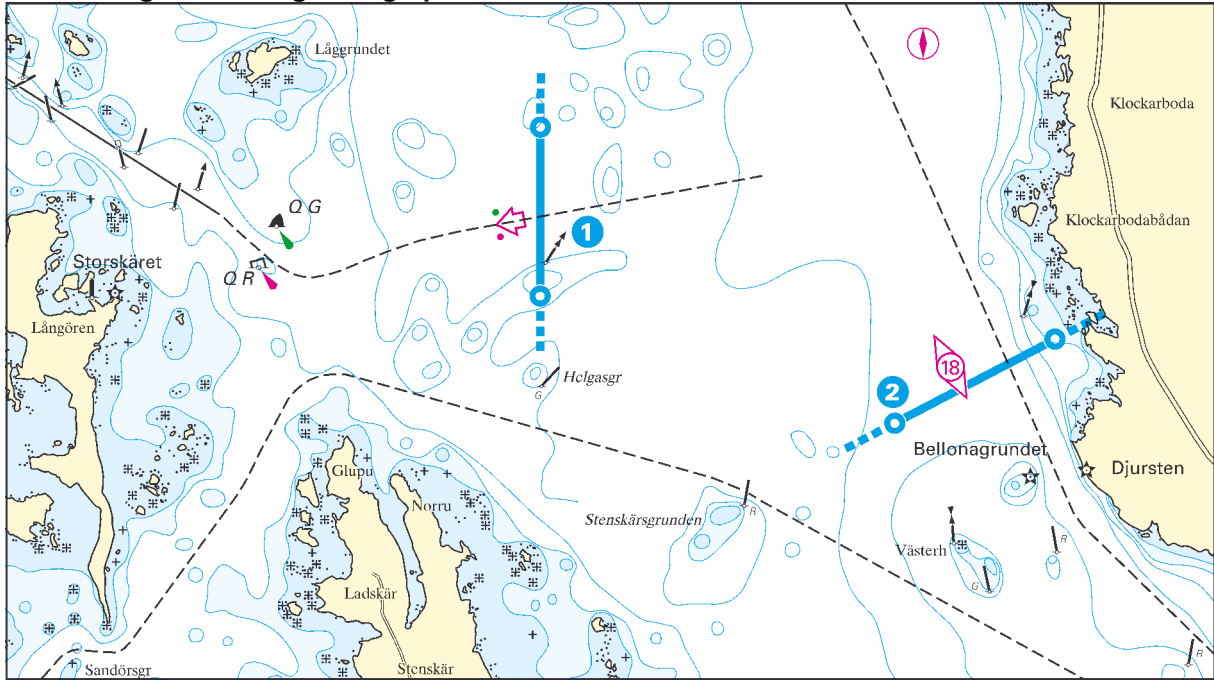


<b>Designated pilotage fairways</b>	<b>CHART</b>
Forsmark - Öregrundsgrepen .....	<b>St1</b>
Öregrund - Öregrundsgrepen .....	<b>St1</b>
Hargshamn - inshore route - Öregrundsgrepen .....	<b>St1</b>
Hallstavik - inshore route - Öregrundsgrepen .....	<b>St1</b>
Forsmark - inshore route - Svartklubben .....	<b>St2</b>
Öregrund - inshore route - Svartklubben .....	<b>St2</b>
Hargshamn - Svartklubben .....	<b>St2</b>
Hallstavik - Svartklubben .....	<b>St2</b>
Norrtälje - Simpnäsklubb .....	<b>St3</b>
Kapellskär - Simpnäsklubb .....	<b>St3</b>
Stockholm - Simpnäsklubb .....	<b>St3</b>
Norrtälje - Tjärven .....	<b>St4</b>
Kapellskär - Tjärven .....	<b>St4</b>
Stockholm - Tjärven .....	<b>St4</b>
Kanholmsfjärden - Saxarfjärden - Tjärven .....	<b>St4</b>
Kanholmsfjärden - Möja - Tjärven .....	<b>St4</b>
Stockholm - Sandhamn .....	<b>St5</b>
Kanholmsfjärden - Sandhamn .....	<b>St5</b>
Kanholmsfjärden - Mysingen - Landsort .....	<b>St6</b>
Studsvik - Gustaf Dalén .....	<b>St7</b>
Oxelösund (SSAB) - Lillhammarsgrund - Gustaf Dalén .....	<b>St7</b>
Oxelösund (SSAB) - Mellskärsleden - Gustaf Dalén .....	<b>St 8</b>
Vinterklasen - Gustaf Dalén .....	<b>St9</b>
Oxelösund - Vinterklasen .....	<b>St9</b>
Marviken - Vinterklasen .....	<b>St9</b>
Djurön - Vinterklasen .....	<b>St9</b>
Braviken - Vinterklasen .....	<b>St9</b>
Norrköping - Vinterklasen .....	<b>St9</b>
Designated pilotage fairways subject to compulsory pilotage from the port of departure to the port of destination .....	<b>St10</b>

St1 - Pilotage lines Öregrundsgrepen N



**Pilotage line**

1) Forsmark 60°23,35' N 018°20,15' E 60°22,75' N 018°20,15' E

**Designated pilotage fairway** **Cat.2** **Cat.3** **Bording area\***

Forsmark - Öregrundsgrepen 80/15/4,5 80/15/4,5 a

**Pilotage line**

2) Öregrundsgrepen N 60°22,30' N 018°22,70' E 60°22,60' N 018°23,85' E

**Designated pilotage fairway** **Cat.2** **Cat.3** **Bording area\***

Öregrund - Öregrundsgrepen 80/15/- 90/16/- a

Öregrund - inshore route - Svartklubben 80/15/- 90/16/- b

Hargshamn - inshore route - Öregrundsgrepen 80/15/5 80/15/5 a

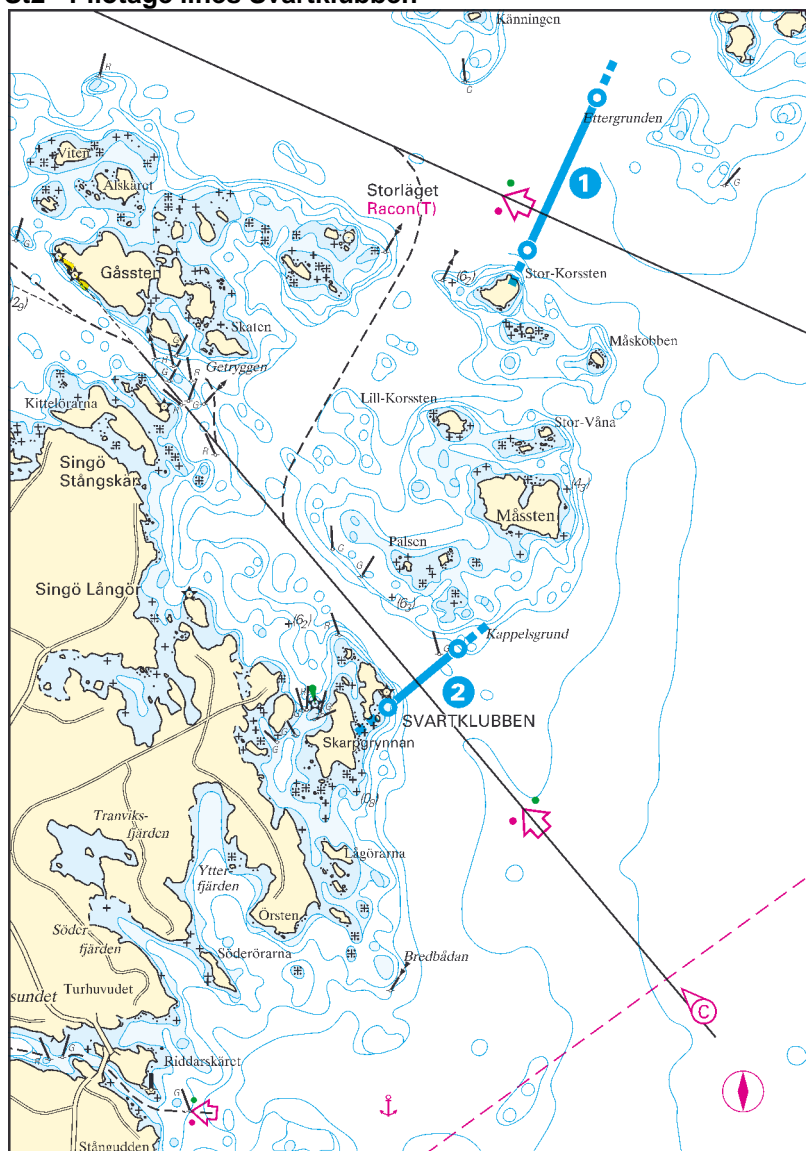
Hallstavik - inshore route - Öregrundsgrepen 80/15/5 80/15/5 a

**\*Bording area**

a) north of Öregrund (after arrangement)

b) 2,5 M southeast of Svartklubben light

## St2 - Pilotage lines Svartklubben

**Pilotage line**

1) Svartklubben N	60°13,00' N	018°51,30' E	60°12,35' N	018°50,70' E
2) Svartklubben S	60°10,65' N	018°50,10' E	60°10,40' N	018°49,50' E

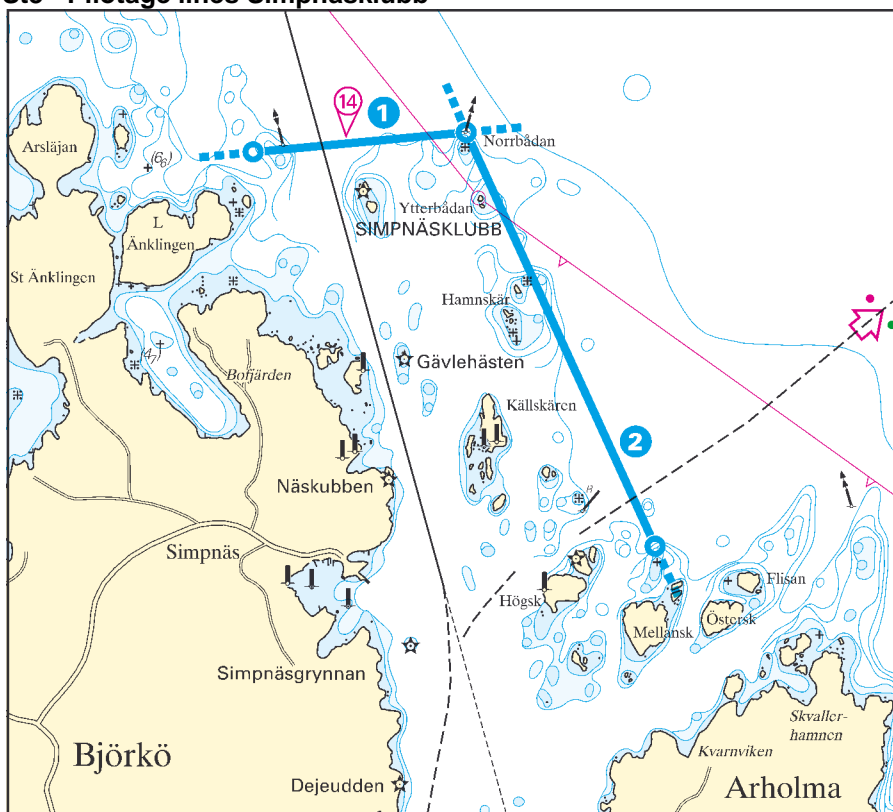
**Designated pilotage fairway**

	Cat.2	Cat.3	Bording area*
Forsmark - inshore route - Svartklubben	80/15/4,5	80/15/4,5	b
Öregrund - inshore route - Svartklubben	80/15/-	90/16/-	b
Hargshamn - Svartklubben	80/15/5	80/15/5	b
Hallstavik - Svartklubben	80/15/5	80/15/5	b

**\*Bording area**

b) 2,5 M southeast of Svartklubben light

St3 - Pilotage lines Simpnäsklubb



**Pilotage line**

1) Simpnäs N	59°53,70' N 019°04,00' E	59°53,77' N 019°05,51' E
2) Simpnäs O	59°53,77' N 019°05,51' E	59°52,30' N 019°06,85' E

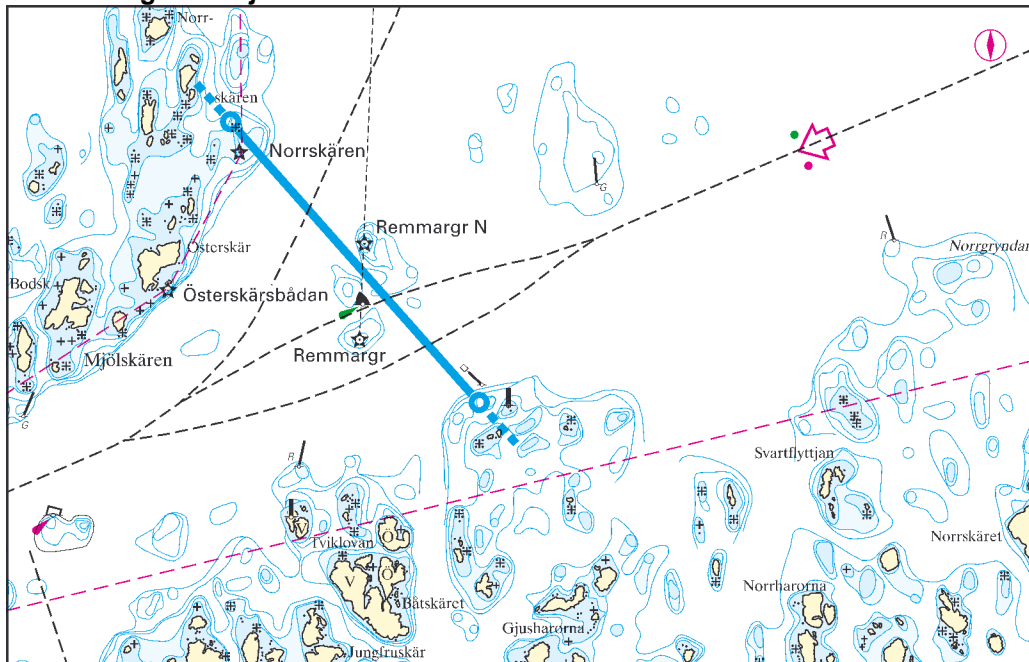
**Designated pilotage fairway**

	<b>Cat.2</b>	<b>Cat.3</b>	<b>Bording area*</b>
Norttälje - Simpnäsklubb	70/14/4,5	70/14/4,5	c
Kapellskär - Simpnäsklubb	70/14/4,5	70/14/4,5	c
Stockholm - Simpnäsklubb	70/14/4,5	70/14/4,5	c

**\*\*Bording area**

c) north of Simpnäsklubb light

St4 - Pilotage line Tjärven



**Pilotage line**

1) Tjärven	59°46,30' N	019°18,10' E	59°45,30' N	019°19,85' E
------------	-------------	--------------	-------------	--------------

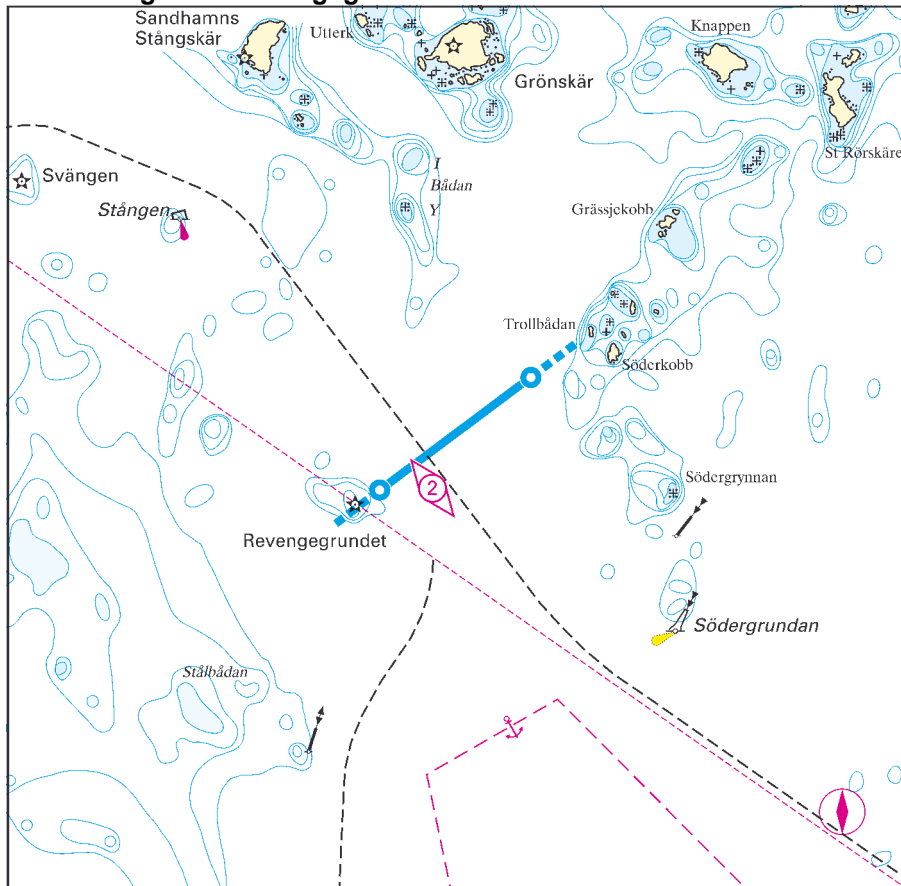
**Designated pilotage fairway**

	Cat.2	Cat.3	Bording area*
Norttälje - Tjärven	70/14/4,5	70/14/4,5	d,e
Kapellskär - Tjärven	70/14/4,5	70/14/4,5	d,e
Stockholm - Tjärven	70/14/4,5	70/14/4,5	d,e
Kanholmsfjärden - Saxarfjärden - Tjärven	70/14/4,5	70/14/4,5	d,e
Kanholmsfjärden – Möja - Tjärven	70/14/4,5	70/14/4,5	d,e

**\*Bording area**

- d) northwest of Tjärven
- e) southeast of Tjärven

**St5 - Pilotage line Revengegrundet**



**Pilotage line**

1 ) Revengegrundet 59°15,10' N 019°00,95' E 59°15,50' N 019°02,00' E

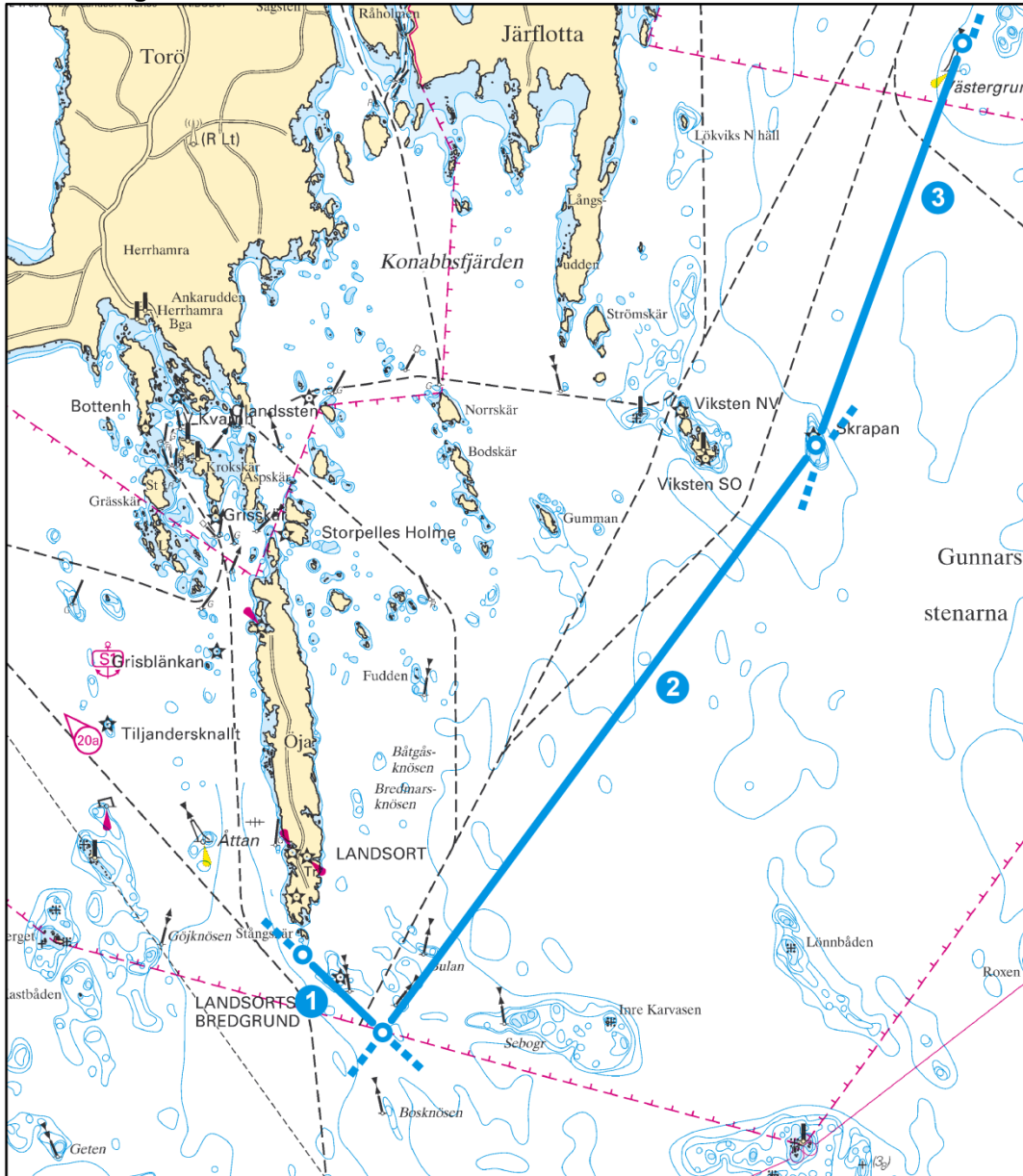
**Designated pilotage fairway**

	Cat.2	Cat.3	Bording area*
Stockholm - Sandhamn	70/14/4,5	70/14/4,5	f
Kanholmsfjärden - Sandhamn	70/14/4,5	70/14/4,5	f

**\*Bording area**

- f ) 2 M southeast of Revengegrundet
- k ) Kanholmsfjärden (0,5 M east of Trollharan)

St6 - Pilotage lines Landsort



**Pilotage line**

1) Landsort S	58°44,00' N 017°52,00' E	58°43,50' N 017°53,00' E
2) Landsort O 1	58°43,50' N 017°53,00' E	58°47,30' N 017°58,40' E
3) Landsort O 2	58°47,30' N 017°58,40' E	58°49,90' N 018°00,23' E

**Designated pilotage fairway**

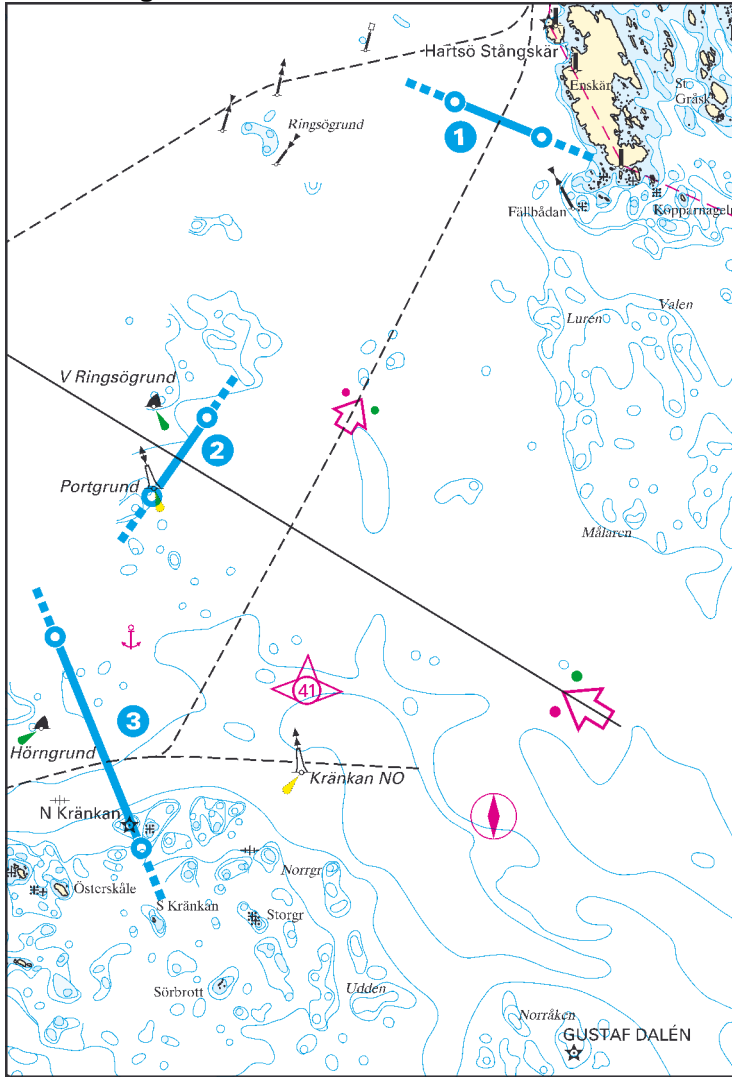
	<b>Cat.2</b>	<b>Cat.3</b>	<b>Bording area*</b>
Kanholmsfjärden - Mysingen - Landsort	70/14/4,5	70/14/4,5	k,g

**\*Bording area**

- g) 2 M southeast of Revengegrundet
- k) Kanholmsfjärden (0,5 M east of Trollharan)



St7 - Pilotage lines Bråviken O



**Pilotage line**

1) Studsvik / Tvären 58°41,05' N 017°26,70' E 58°40,85' N 017°27,65' E

**Designated pilotage fairway** **Cat.2** **Cat.3** **Bording area\***

Studsvik - Gustaf Dalén 70/14/4,5 70/14/4,5 i

**Pilotage line**

2) Lillhammarsleden 58°38,80' N 017°23,40' E 58°39,25' N 017°24,00' E

**Designated pilotage fairway** **Cat.2** **Cat.3** **Bording area\***

Oxelösund (SSAB) - Lillhammarsgrund - Gustaf Dalén 90/16/- 90/16/- i

**Pilotage line**

3) Kränkan 58°38,00' N 017°22,35' E 58°36,80' N 017°23,30' E

**Designated pilotage fairway** **Cat.2** **Cat.3** **Bording area\***

Vinterklasen - Gustaf Dalén 90/16/- 100/17/- i,j

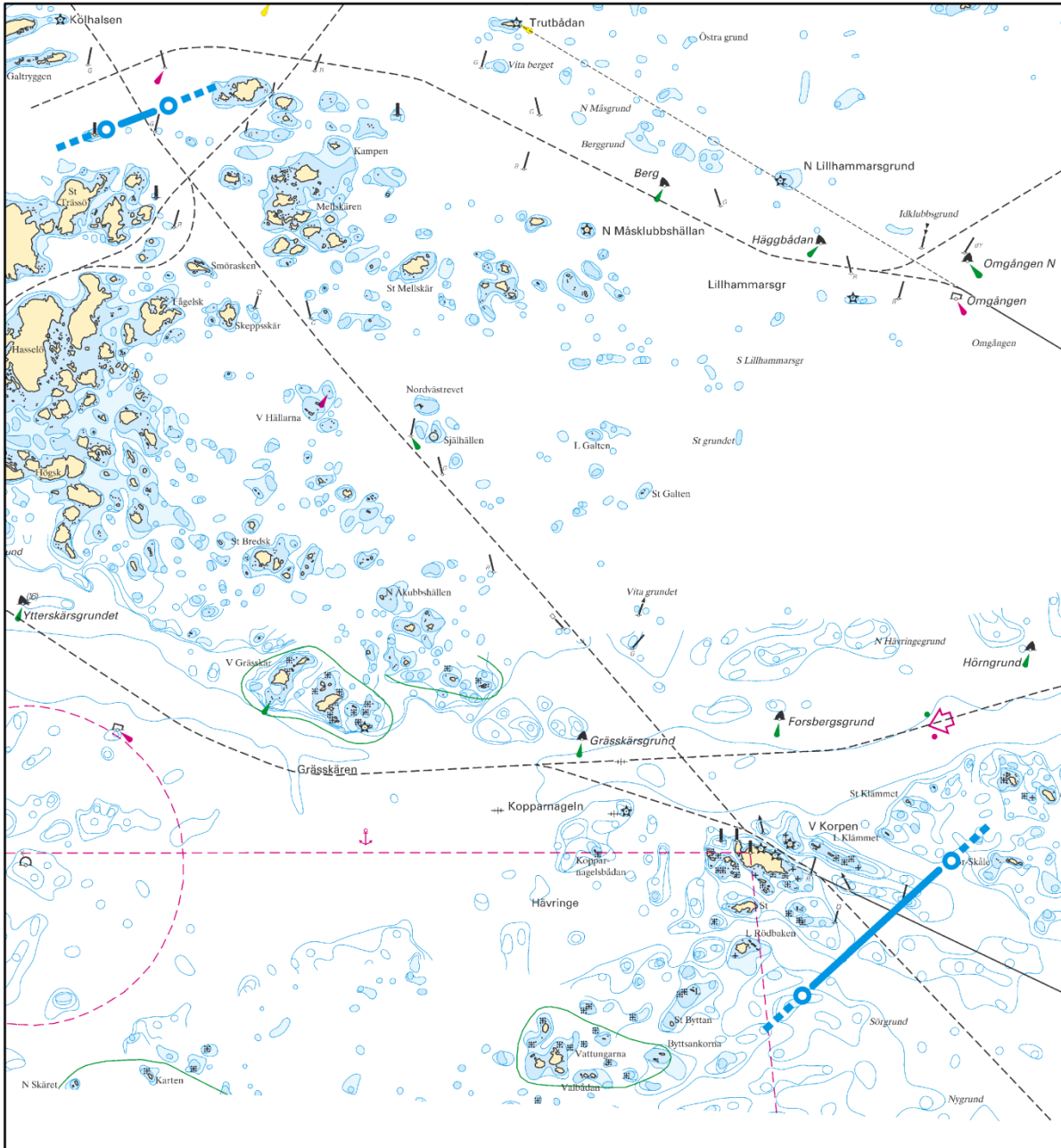
**\*Bording area**

i) 2 M north of light Gustav Dalén

j) south of Vinterklasen



St8 - Pilotage lines Mellskärsleden



**Pilotage line**

1) Mellskärsleden N	58°40,75' N 017°11,05' E	58°40,90' N 017°11,80' E
2) Mellskärsleden S	58°35,30' N 017°19,45' E	58°36,15' N 017°21,25' E

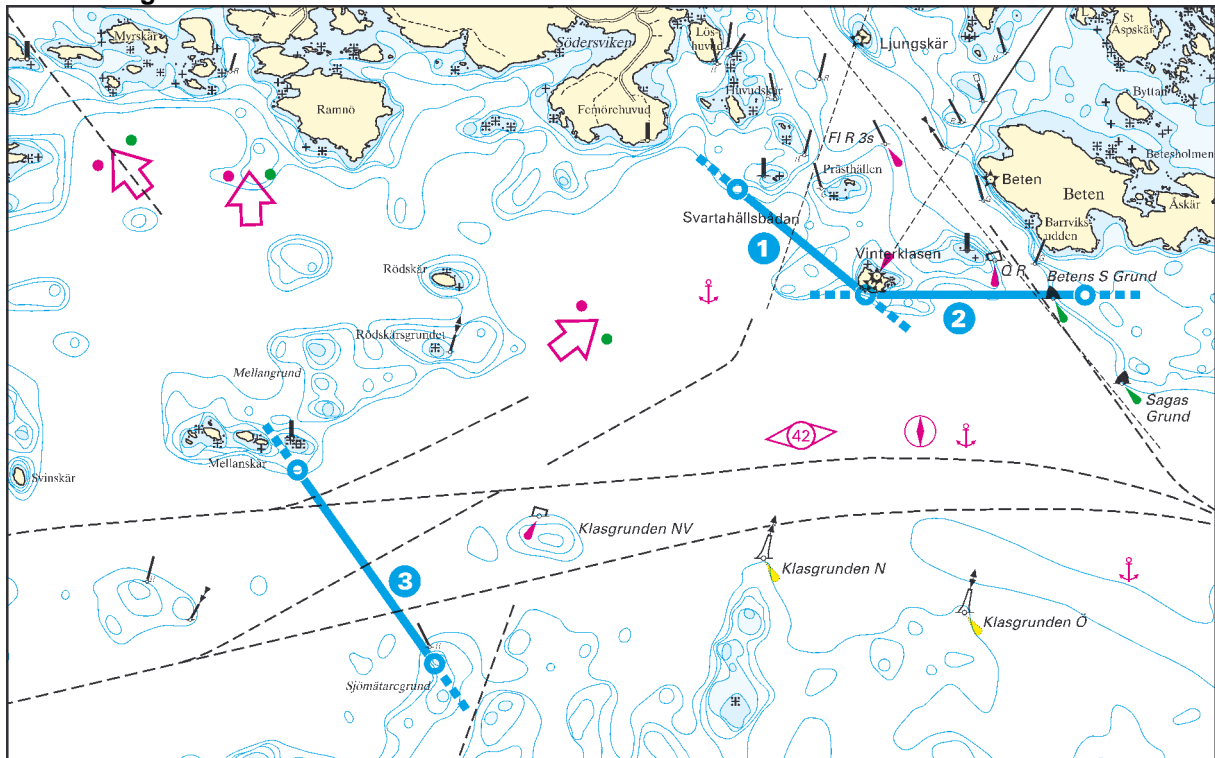
**Designated pilotage fairway**

	Cat.2	Cat.3	Bording area*
Oxelösund (SSAB) - Mellskärsleden - Gustaf Dalén	70/14/4,5	70/14/4,5	i

**\*Bording area**

- i) 2 M north of light Gustav Dalén

St9 - Pilotage lines Bråviken V



**Pilotage line**

1) Oxelösund V	58°38,70' N 017°07,05' E	58°38,40' N 017°07,75' E
2) Oxelösund O	58°38,40' N 017°07,75' E	58°38,40' N 017°08,95' E

**Designated pilotage fairway**

	Cat.2	Cat.3	Bording area*
Oxelösund - Vinterklasen	90/16/-	90/17/-	j

**Pilotage line**

3) Vinterklasen	58°37,90' N 017°04,65' E	58°37,35' N 017°05,40' E
-----------------	--------------------------	--------------------------

**Designated pilotage fairway**

	Cat.2	Cat.3	Bording area*
Vinterklasen - Gustaf Dalén	90/16/-	100/17/-	j
Marviken - Vinterklasen	70/14/4,5	70/14/4,5	j
Djurön - Vinterklasen	80/15/-	90/16/-	j
Braviken - Vinterklasen	80/15/-	90/16/-	j
Norrköping - Vinterklasen	80/15/-	90/16/-	j

**\*Bording area**

j) south of Vinterklasen

**St10 - Designated pilotage fairways subject to compulsory pilotage from the port of departure to the port of destination**

Limits for compulsory pilotage in all of the below listed pilotage fairways:

<b>Cat.2</b>	<b>Cat.3</b>
70/14/4,5	70/14/4,5

Kapellskär – Möja - Kanholmsfjärden

Stockholm - Kanholmsfjärden

Stockholm – the Hammarby lock - Södertälje

Kanholmsfjärden – Mysingen - Nynäshamn

**Designated pilotage fairways** **CHART**

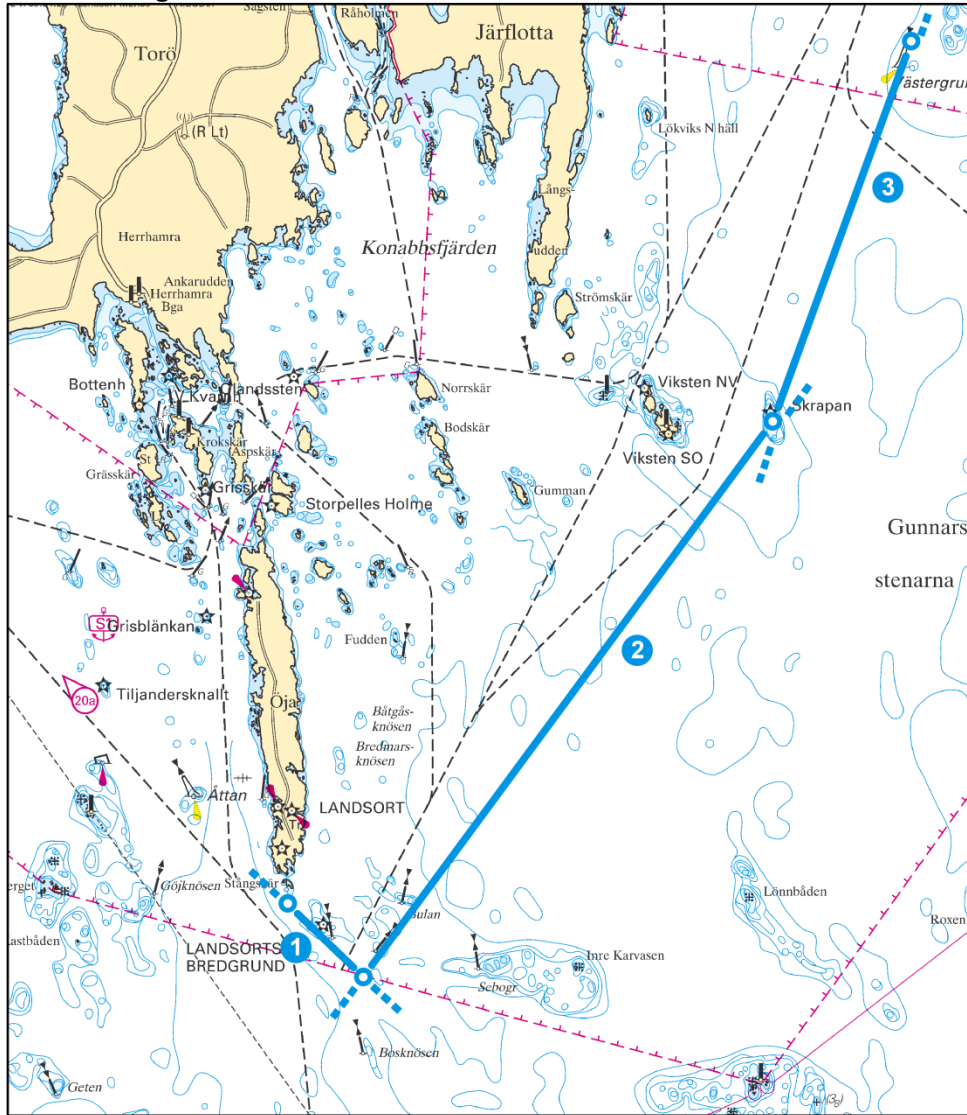
---

Kanholmsfjärden - Mysingen - Landsort.....**So1**  
Nynäshamn - Landsort .....**So1**  
Nynäshamn - Gunnarsstenarna – Gunnarstenarna VLCC .....**So1**

Södertälje - Landsort .....**So2**  
Stora Vika - Landsort.....**So2**

Designated pilotage fairways subject to compulsory pilotage from  
the port of departure to the port of destination .....**So3**

**So1 - Pilotage lines Landsort**



**Pilotage line**

1) Landsort S	58°44,00' N 017°52,00' E	58°43,50' N 017°53,00' E
2) Landsort O 1	58°43,50' N 017°53,00' E	58°47,30' N 017°58,40' E
3) Landsort O 2	58°47,30' N 017°58,40' E	58°49,90' N 018°00,23' E

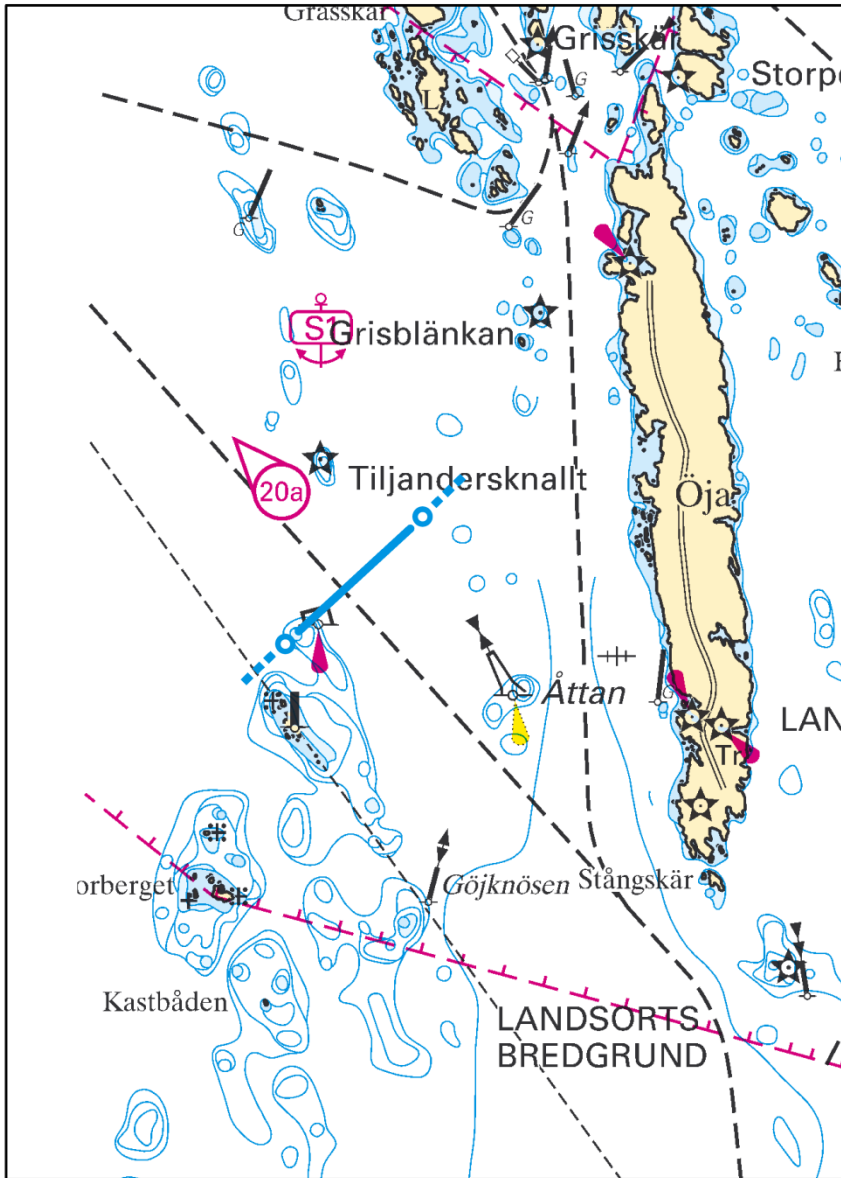
**Designated pilotage fairway**

	Cat.2	Cat.3	Bording area*
Kanholmsfjärden - Mysingen - Landsort	70/14/4,5	70/14/4,5	a,d
Nynäshamn - Landsort	90/16/-	100/17/-	a
Nynäshamn – Gunnarstenarna – Gunnarstenarna VLCC	90/16/-	100/17/-	b

**\*Bording area**

- a) 2 M south of Landsort light
- b) Gunnarstenarna (compulsory for VLCC)
- d) Kanholmsfjärden 0,5 east of Trollharan (PA STO)

So2 - Pilotage line Tiljandersknallt



**Pilotage line**

1) Tiljandersknallt	58°44,90' N	017°49,35' E	58°45,30' N	017°50,20' E
---------------------	-------------	--------------	-------------	--------------

**Designated pilotage fairway**

	Cat.2	Cat.3	Bording area*
Södertälje - Landsort	70/14/4,5	70/14/4,5	a
Stora Vika - Landsort	70/14/4,5	70/14/4,5	a

**\*Bording area**

- a) 2 M south of Landsort light

**So3 - Designated pilotage fairways subject to compulsory pilotage from the port of departure to the port of destination**

Limits for compulsory pilotage in all of the below listed pilotage fairways:

Cat.2	Cat.3
70/14/4,5	70/14/4,5

Södertälje - Nynäshamn

Södertälje - Stora Vika

Stockholm - the Hammarby lock - Södertälje

Vårby - Södertälje

Vårby - the Hammarby lock - Stockholm

Hässelby - Södertälje

Hässelby - the Hammarby lock - Stockholm

Löten - Södertälje

Bålsta - Södertälje

Bålsta - the Hammarby lock - Stockholm

Strängnäs - south fairway - Södertälje

Strängnäs - south fairway - Stockholm

Strängnäs - north fairway - Södertälje

Strängnäs - north fairway - Stockholm

Västerås - south fairway - Södertälje

Västerås - north fairway - Södertälje

Västerås - south fairway - Stockholm

Västerås - north fairway - Stockholm

Köping - Västerås

Köping - south fairway - Södertälje

Köping - north fairway - Södertälje

Köping - south fairway - Stockholm

Köping - north fairway - Stockholm