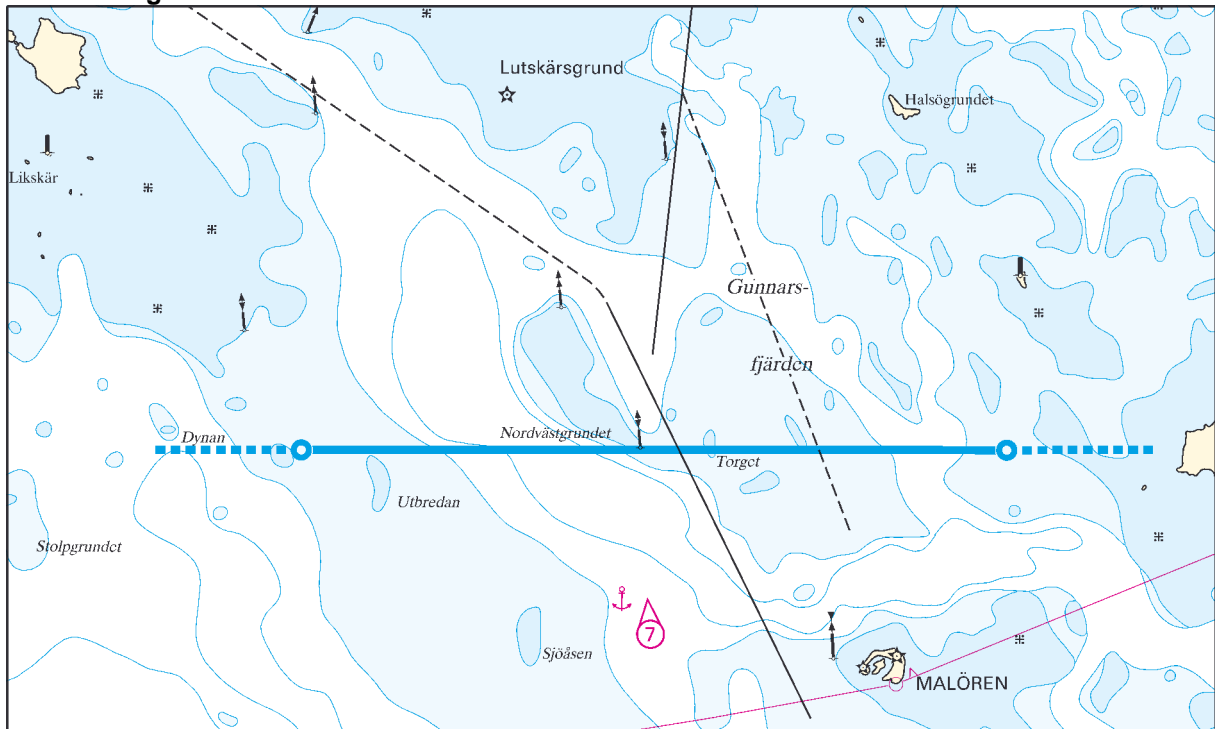


DESIGNATED PILOTAGE FAIRWAYS	CHART
Malören - Axelsvik	Lu1
Malören - Karlsborg	Lu1
Farstugrunden - Luleå	Lu2
Rödkallen - Sandgrönfjärden - Luleå	Lu3
Nygrån - Pitsundet (Munksund)	Lu4
Nygrån - Haraholmen	Lu4
Gåsören - Skelleftehamn	Lu5
Gåsören - Rönnskärsverken	Lu5
Väktaren - Umeå (Holmsund)	Lu6
Väktaren - Obbola	Lu6
Väktaren - Rundvik	Lu7
Skagsudde - Rundvik	Lu7
Skagsudde – inner route - Husum	Lu8
Skagsudde – middle route - Husum	Lu8
Skagsudde – outer route - Husum	Lu8
Skagsudde - Örnsköldsvik	Lu9
Skagsudde - Köpmanholmen	Lu10
Skagsudde - inshore route - Högbonden	Lu10
Gnäggen/Högbonden – inshore route - Örnsköldsvik	Lu10
Högbonden - inshore route - Köpmanholmen	Lu10
N/S Storön - Bollsta	Lu11
Härnö/Lungö - Sannasundet - Bollsta	Lu11
N/S Storön - Väja	Lu11
Härnö/Lungö - Sannasundet - Väja	Lu11
N/S Storön - Lugnvik	Lu11
Härnö/Lungö - Sannasundet - Lugnvik	Lu11
N/S Storön - Utansjö	Lu11
Härnö/Lungö - Sannasundet - Utansjö	Lu11
Skagsudde - Sannasundet/N/S Storön - Härnösand	Lu11
Skagsudde - Härnö/Lungö - Härnösand	Lu11

Lu1 - Pilotage line Malören



Pilotage line

1) Malören 65°34,60' N 023°13,00' E 65°34,60' N 023°37,20' E

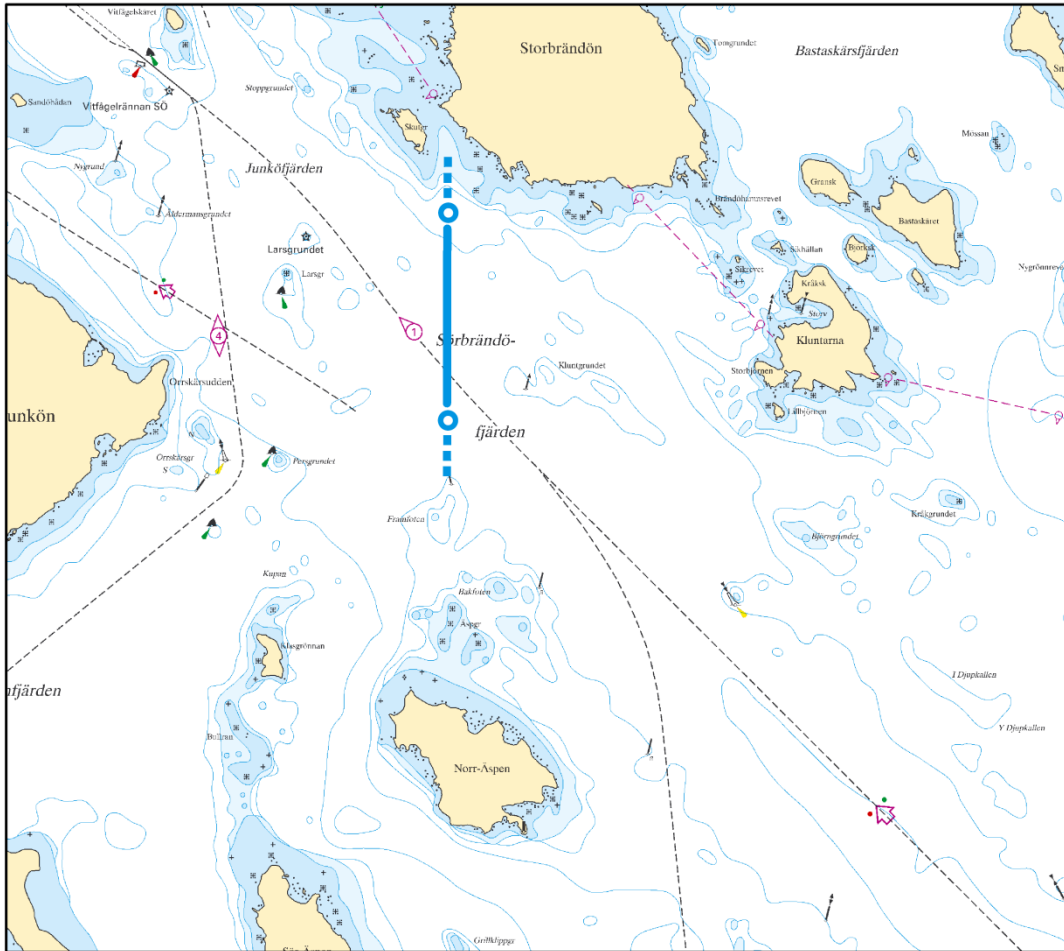
Designated pilotage fairway

	Cat.2	Cat.3	Bording area*
Malören - Axelsvik	70/14/4,5	70/14/4,5	a
Malören - Karlsborg	70/14/4,5	70/14/4,5	a

***Bording area**

a) Farstugrunden

Lu2 - Pilotage lines Luleå – Larsgrund



Pilotage line

1) Larsgrund 65°28,30' N 022°30,30' E 65°26,80' N 022°30,30' E

Designated pilotage fairway

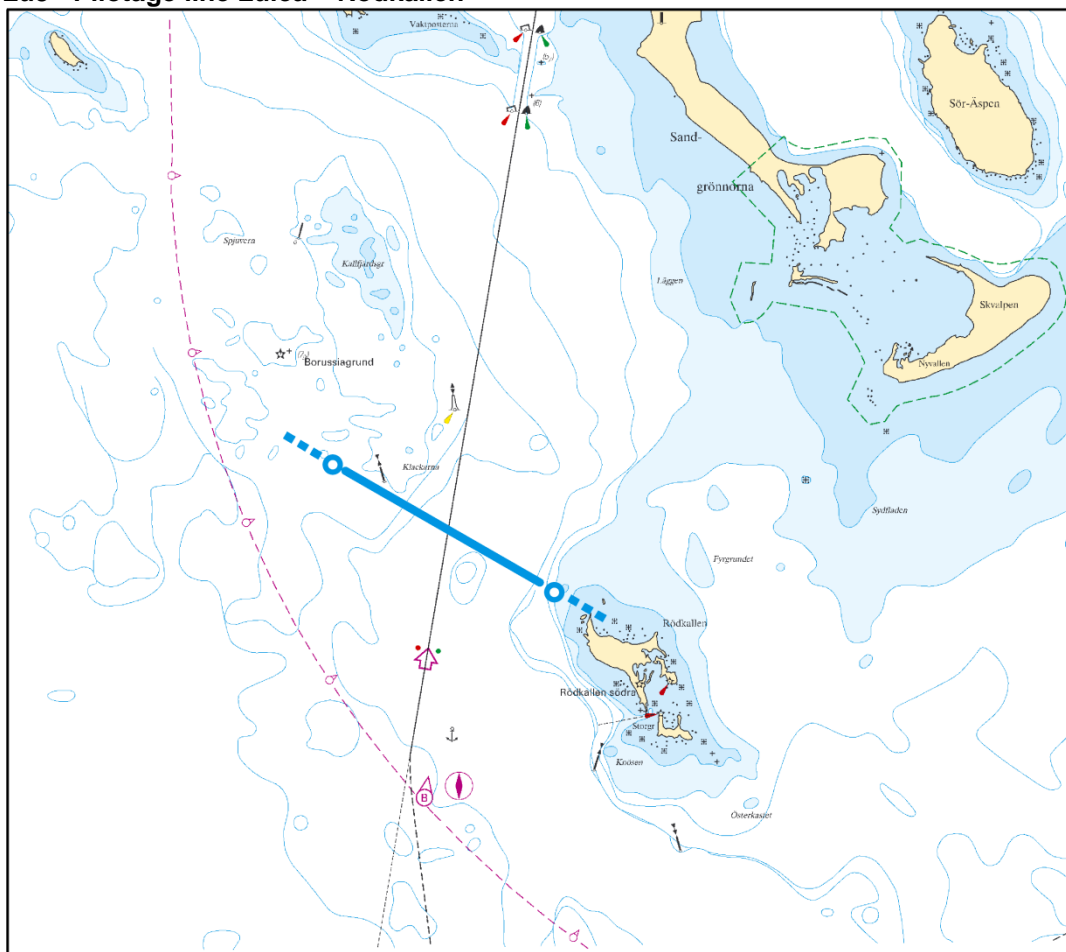
Farstugrunden - Luleå **Cat.2** **Cat.3** **Bording area***

Farstugrunden - Luleå 80/15/- 90/16/- a

****Bording area**

a) Farstugrunden

Lu3 - Pilotage line Luleå – Rödkallen



Pilotage line

1) Rödkallen 65°20,40' N 022°17,00' E 65°19,50' N 022°20,75' E

Designated pilotage fairway

	Cat.2	Cat.3	Bording area*
Rödkallen - Sandgrönnsfjärden - Luleå	80/15/-	90/16/-	b

***Bording area**

b) Rödkallen

Lu4 - Pilotage line Piteå - Haraholmen



Pilotage line

1) Nygrån 65°03,00' N 021°37,45' E 65°07,50' N 021°52,15' E

Designated pilotage fairway

Nygrån - Pitsundet (Munksund)

Cat.2	Cat.3	Bording area*
-------	-------	---------------

70/14/5	70/14/5	e
---------	---------	---

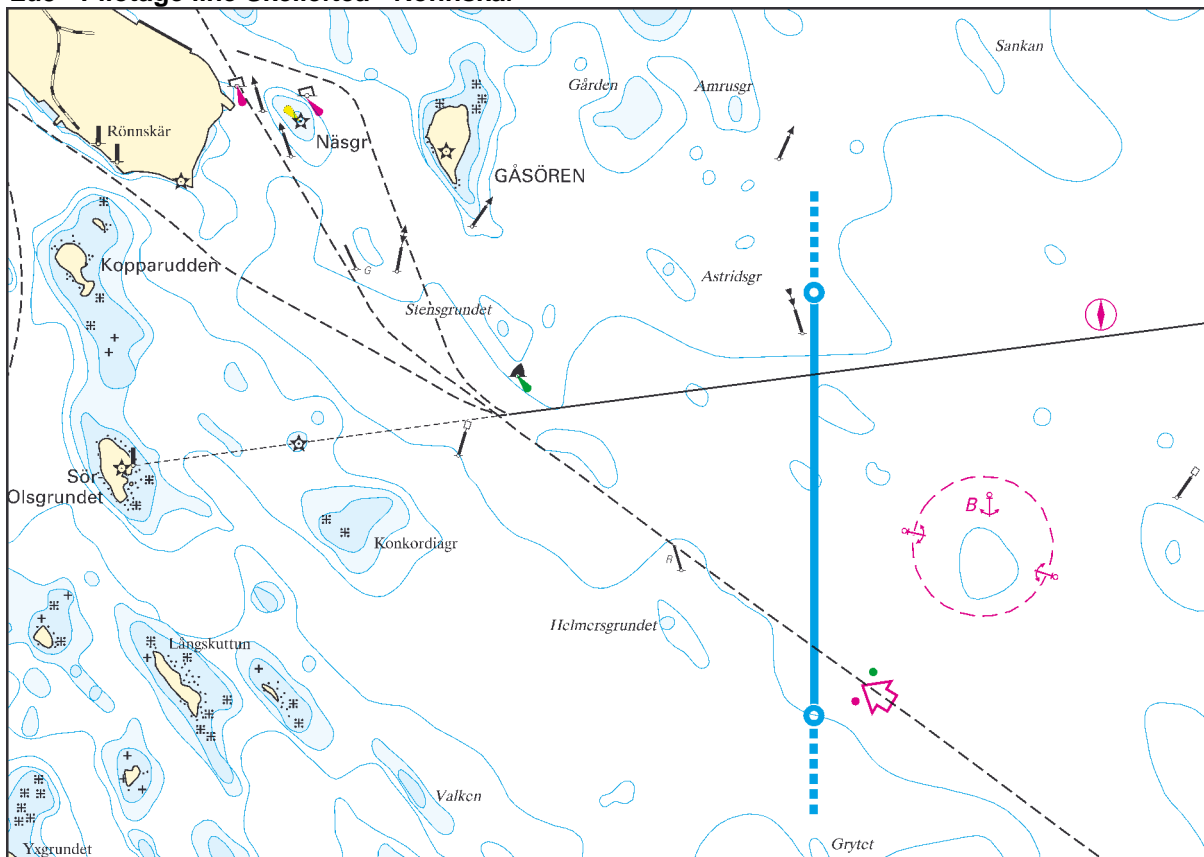
Nygrån - Haraholmen

80/15/-	90/16/-	e
---------	---------	---

***Bording area**

e) Gåsören

Lu5 - Pilotage line Skellefteå - Rönnskär



Pilotage line

1) Gåsören 64°39,30' N 021°22,10' E 64°37,80' N 021°22,10' E

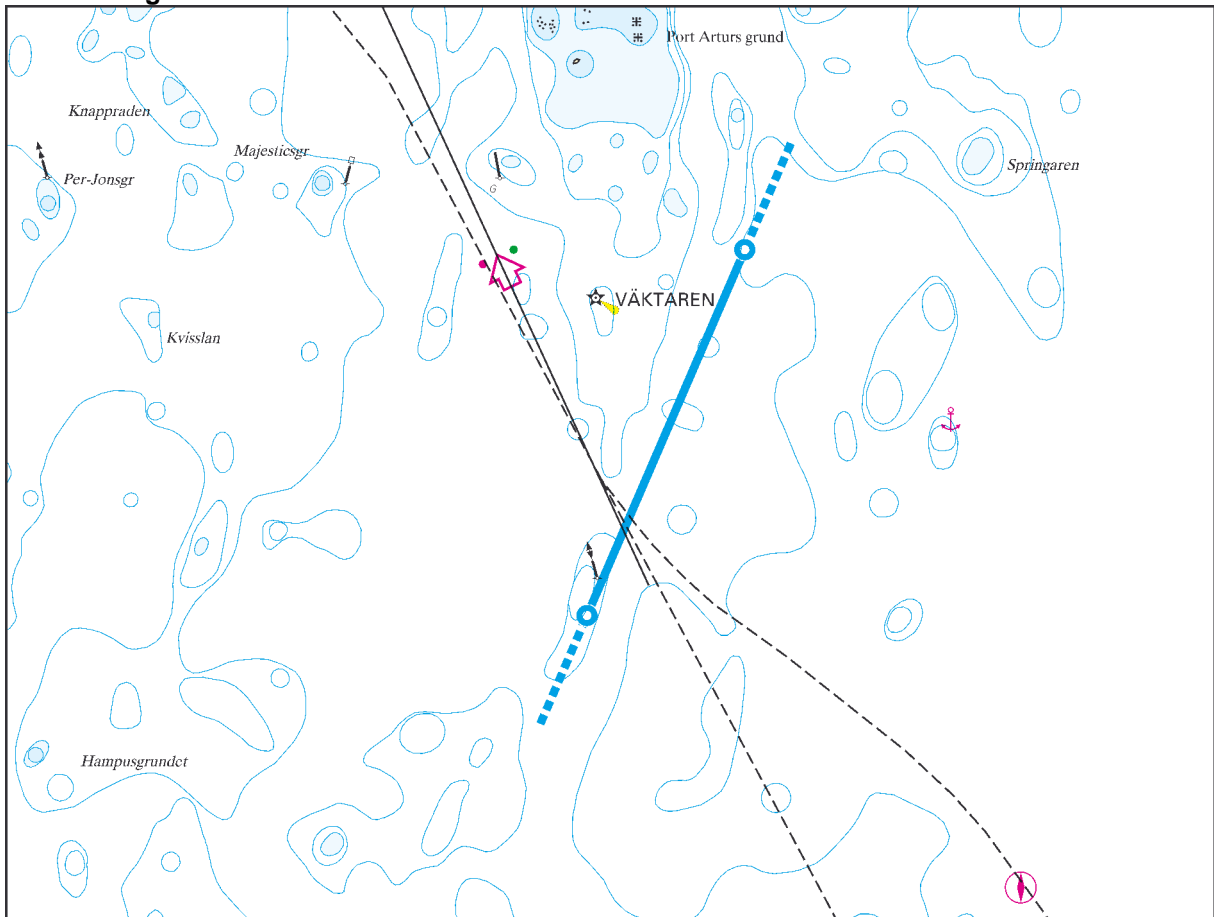
Designated pilotage fairway

	Cat.2	Cat.3	Bording area*
Gåsören - Skelleftehamn	80/15/-	90/16/-	e
Gåsören - Rönnskårsverken	80/15/-	90/16/-	e

***Bording area**

e) Gåsören

Lu6 - Pilotage line Umeå



Pilotage line

1) Väktaren

63°35,80' N 020°25,10' E 63°37,10' N 020°26,35' E

Designated pilotage fairway

Väktaren - Umeå (Holmsund)

Cat.2

Cat.3

Bording area*

80/15/-

90/16/-

f

Väktaren - Obbola

80/15/-

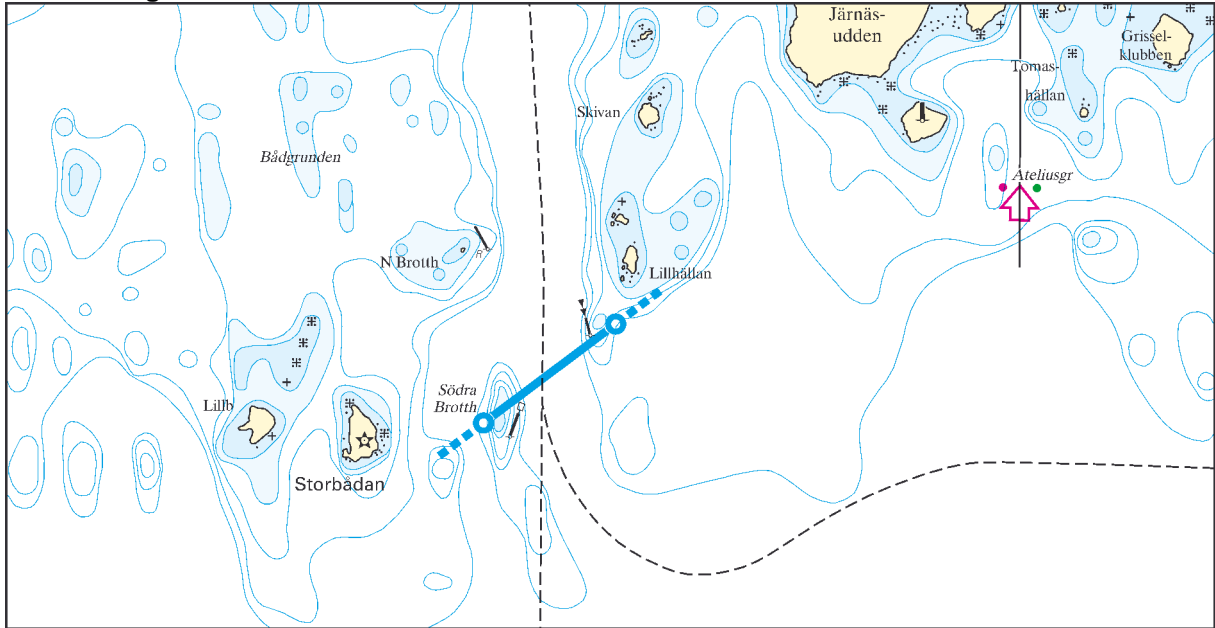
90/16/-

f

***Bording area**

f) Väktaren

Lu7 - Pilotage line Rundvik



Pilotage line

1) Rundvik 63°24,60' N 019°36,35' E 63°24,95' N 019°37,40' E

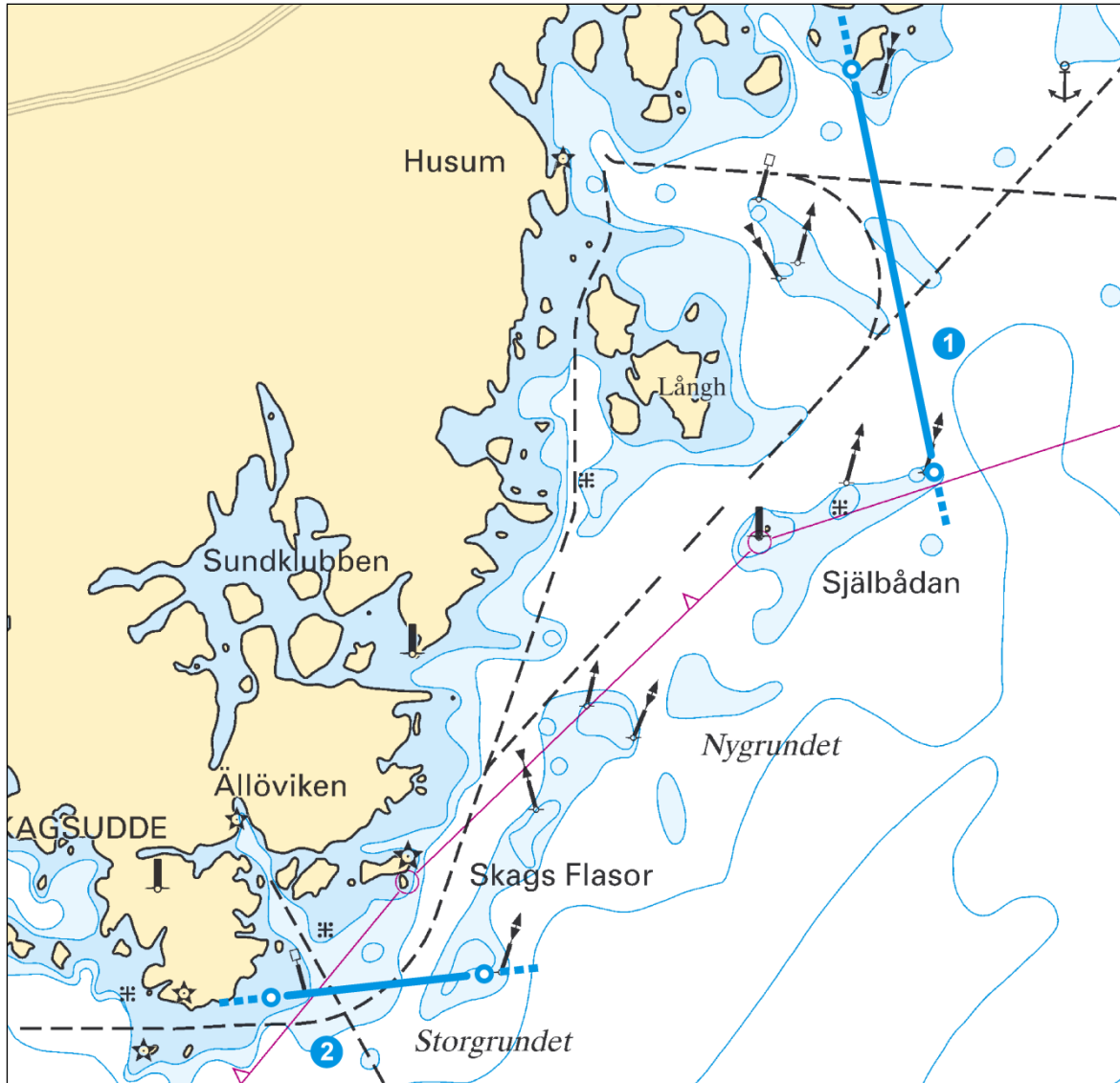
Designated pilotage fairway

	Cat.2	Cat.3	Bording area*
Väktaren - Rundvik	80/15/5	90/16/5,5	f
Skagsudde - Rundvik	80/15/5	90/16/5,5	h

***Bording area**

- f) Väktaren
- h) south of Skagsudde

Lu8 - Pilotage lines Husum



Pilotage line

1) Husum S 63°11,25' N 019°02,60' E 63°11,45' N 019°06,60' E

Designated pilotage fairway	Cat.2	Cat.3	Bording area*
Skagsudde – inner route - Husum	70/14/-	70/14/-	h
Skagsudde – middle route - Husum	90/16/-	100/17/-	h

Pilotage line

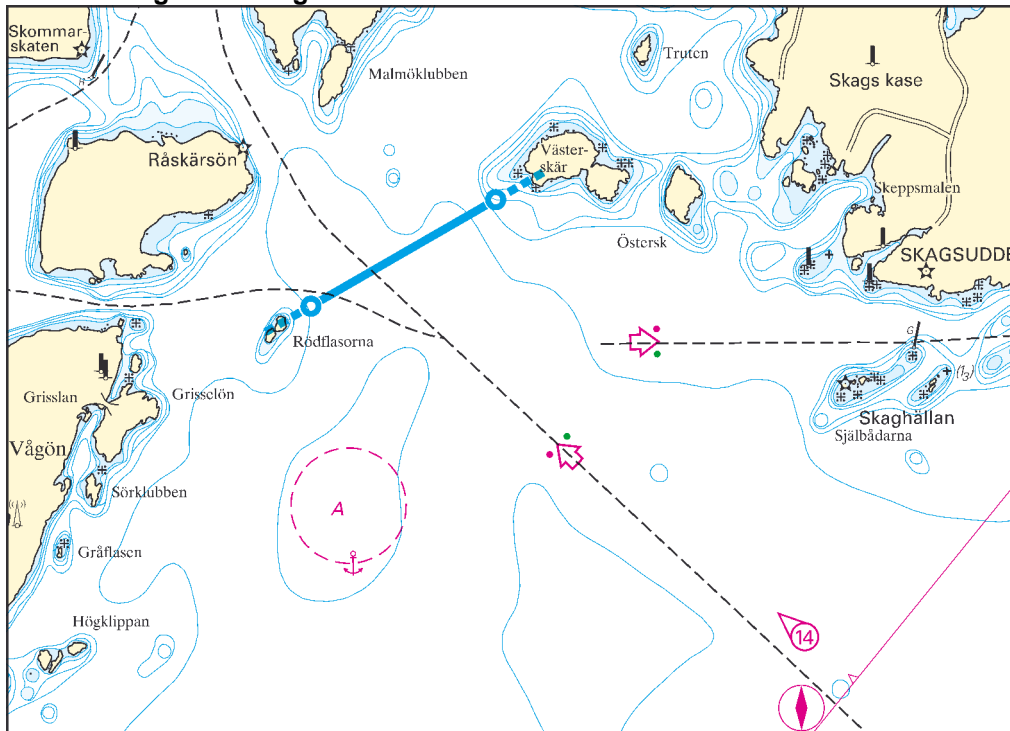
2) Husum N 63°19,10' N 019°13,50' E 63°15,70' N 019°15,05' E

Designated pilotage fairway	Cat.2	Cat.3	Bording area*
Skagsudde – middle route - Husum	90/16/-	100/17/-	h
Skagsudde – outer route - Husum	90/16/-	100/17/-	h

***Bording area**

h) south of Skagsudde

Lu9 - Pilotage line Skagsudde



Pilotage line

1) Skagsudde 63°11,15' N 018°55,15' E 63°11,60' N 018°56,90' E

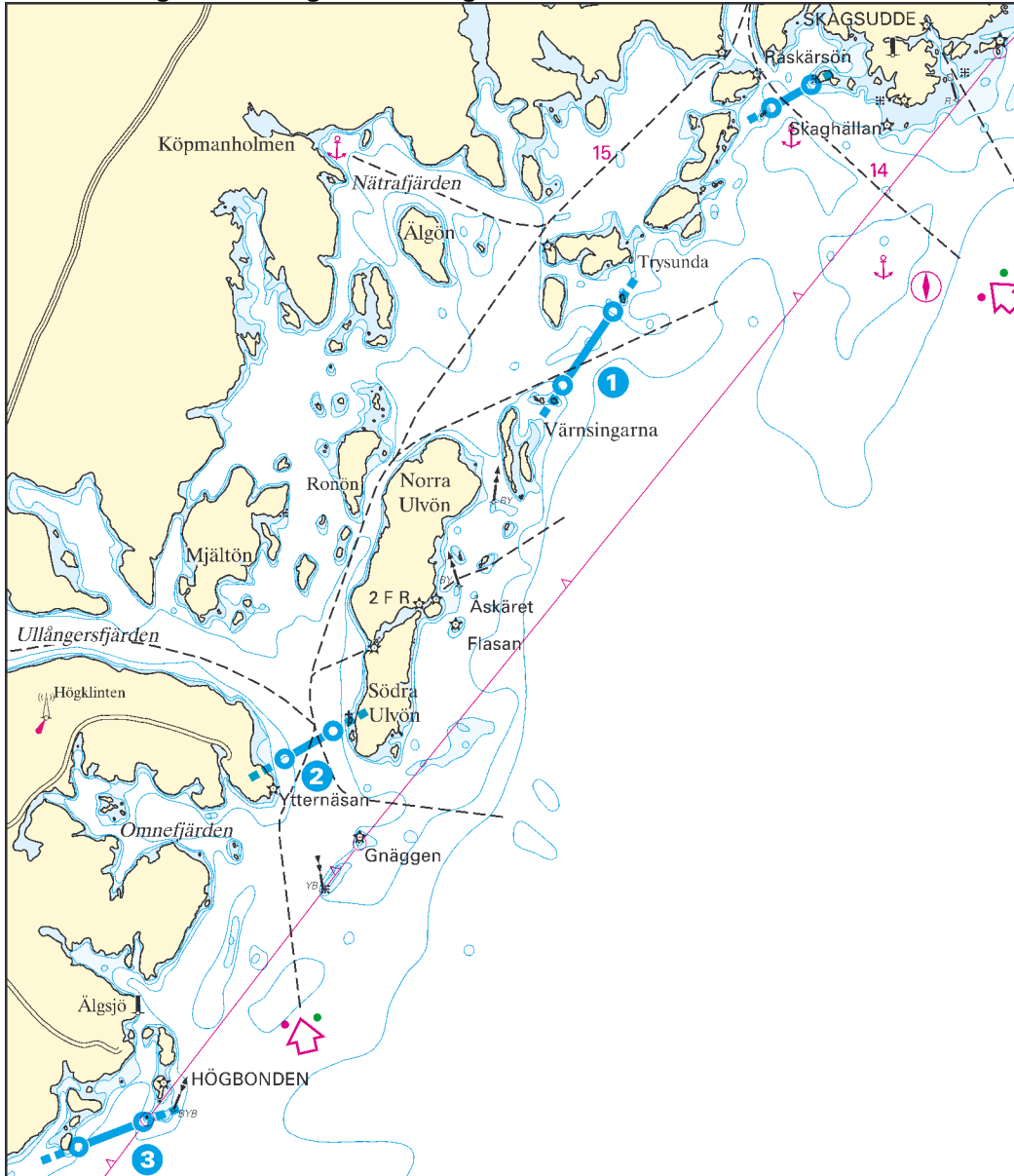
Designated pilotage fairway

	Cat.2	Cat.3	Bording area*
Skagsudde - Örnsköldsvik	90/16/-	100/17/-	h
Skagsudde - Köpmanholmen	70/114/4,5	70/14/4,5	h
Skagsudde – inshore route - Högbonden	90/16/-	100/17/-	h

***Bording area**

h) south of Skagsudde

Lu10 - Pilotage lines Skagsudde – Högbonden



Pilotage line

1) Skrubban	63°07,15' N 018°48,20' E	63°05,70' N 018°46,00' E
-------------	--------------------------	--------------------------

Designated pilotage fairway

	Cat.2	Cat.3	Bording area**
Skagsudde - Örnsköldsvik	90/16/-	100/17/-	h
Skagsudde - Köpmanholmen	70/114/4,5	70/14/4,5	h

Pilotage line

2) Gnäggen	62°58,35' N 018°33,90' E	62°58,90' N 018°36,00' E
------------	--------------------------	--------------------------

Designated pilotage fairway

	Cat.2	Cat.3	Bording area**
Gnäggen/Högbonden – inshore route - Örnsköldsvik	90/16/-	100/17/-	h

Pilotage line

3) Högbonden	62°50,70' N 018°25,00' E	62°51,20' N 018°27,80' E
--------------	--------------------------	--------------------------

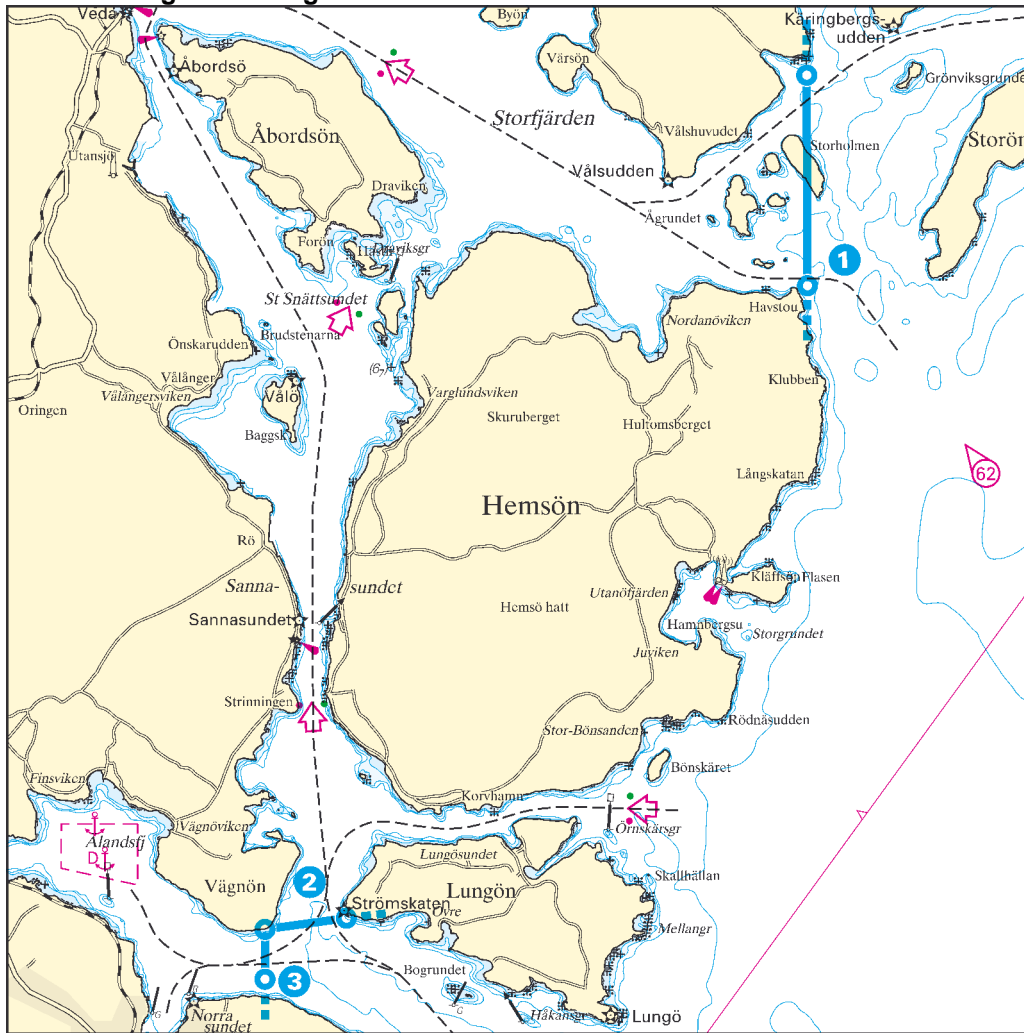
Designated pilotage fairway

	Cat.2	Cat.3	Bording area**
Gnäggen/Högbonden - inshore route - Örnsköldsvik	90/16/-	100/17/-	h
Högbonden - inshore route - Köpmanholmen	70/114/4,5	70/14/4,5	h
Skagsudde - inshore route - Högbonden	90/16/-	100/17/-	h

****Bording area**

h) south of Skagsudde

Lu11 - Pilotage lines Ångermanälven Pilot Area Luleå



Pilotage line

1) N_S Storön 62°47,00' N 018°09,30' E 62°45,10' N 018°09,30' E

Designated pilotage fairway	Cat.2	Cat.3	Bording area**
-----------------------------	-------	-------	----------------

N/S Storön - Bollsta	80/15/5	90/16/5,5	h
N/S Storön - Väja	80/15/5	90/16/5,5	h
N/S Storön - Lugnvik	80/15/5	90/16/5,5	h
N/S Storön - Utansjö	80/16/-	90/16/-	h
Skagsudde - N/S Storön/Sannasundet - Härnösand	80/15/5	90/16/5,5	h

Pilotage line

2) Härnö - Lungö 62°39,30' N 017°58,60' E 62°39,40' N 018°00,20' E

Designated pilotage fairway	Cat.2	Cat.3	Bording area**
-----------------------------	-------	-------	----------------

Härnö/Lungö - Sannasundet - Bollsta	80/15/5	90/16/5,5	h
Härnö/Lungö - Sannasundet - Väja	80/15/5	90/16/5,5	h
Härnö/Lungö - Sannasundet - Lugnvik	80/15/5	90/16/5,5	h
Härnö/Lungö - Sannasundet - Utansjö	80/15/5	90/16/5,5	h

Pilotage line

3) Härnösand 62°39,30' N 017°58,60' E 62°38,85' N 017°58,60' E

Designated pilotage fairway	Cat.2	Cat.3	Bording area**
-----------------------------	-------	-------	----------------

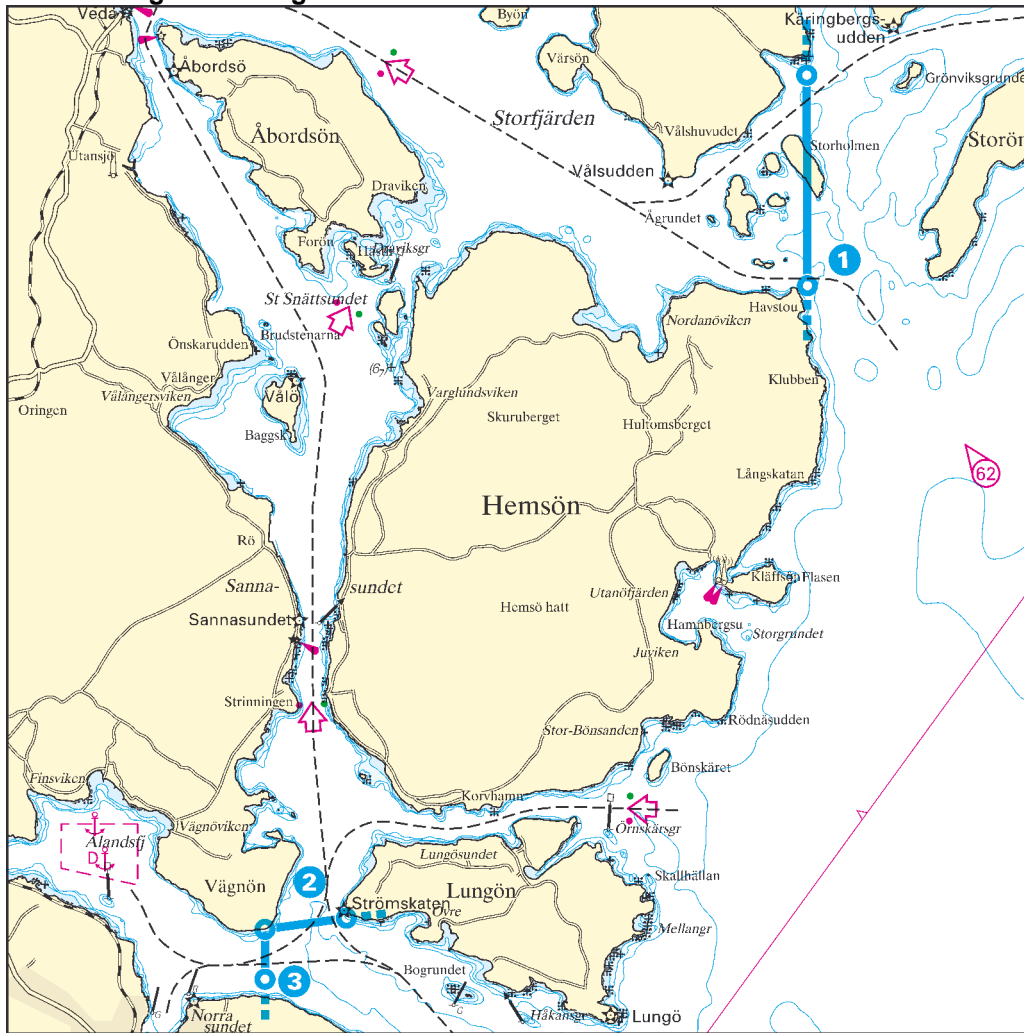
Skagsudde - Härnö/Lungö - Härnösand	90/16/-	100/17/-	h
-------------------------------------	---------	----------	---

****Bording area**

h) south of Skagsudde

Designated pilotage fairways	CHART
Härnö/Storön - Bollsta	Ga1
Bay of Sundsvall - Bollsta	Ga1
Härnö/Storön - Väja	Ga1
Bay of Sundsvall - Väja	Ga1
Härnö/Storön - Lugnvik	Ga1
Bay of Sundsvall - Lugnvik	Ga1
Härnö/Storön - Utansjö	Ga1
Bay of Sundsvall - Utansjö	Ga1
Bay of Sundsvall - Härnösand	Ga1
Härnö - Härnösand	Ga1
Bay of Sundsvall - east of Alnö - Söråker	Ga2
Bay of Sundsvall - west Alnö - Söråker	Ga2
Bay of Sundsvall - east of Alnö - Östrand	Ga2
Bay of Sundsvall - west Alnö - Östrand	Ga2
Bay of Sundsvall - east of Alnö - Tunadal	Ga2
Bay of Sundsvall - west Alnö - Tunadal	Ga2
Bay of Sundsvall - Kubikenborg	Ga2
Bay of Sundsvall - Sundsvall	Ga2
Bay of Sundsvall - Stockvik	Ga2
At sea south of Hornslandet - Hudiksvall	Ga3
At sea south of Hällgrund - Kråksundet - Hudiksvall	Ga3
At sea south of Hornslandet - Iggesund (Skärnäs)	Ga3
At sea south of Hällgrund - Kråksundet - Iggesund (Skärnäs)	Ga3
At sea south of Hällgrund - Stugsund	Ga4
At sea south of Hällgrund - Prästholmen - Långgrör/Sandarne	Ga4
At sea south of Hällgrund - Myrskär - Långgrör/Sandarne	Ga4
At sea south of Hällgrund - Ala	Ga5
At sea south of Hällgrund - Orrskär	Ga5
At sea south of Hällgrund - Vallvik	Ga5
At sea south of Hällgrund - Norrsundet	Ga6
Gråsjälsbådan - Norrsundet	Ga7
Gråsjälsbådan - Bönan	Ga7
Gråsjälsbådan - Gävle	Ga7
Gråsjälsbådan - Skutskär	Ga7

Ga1 - Pilotage lines Ångermanälven Pilot Area Gävle



Pilotage line

1) N_S Storön	62°47,00' N 018°09,30' E	62°45,10' N 018°09,30' E
2) Härnö_Lungö	62°39,30' N 017°58,60' E	62°39,40' N 018°00,20' E

Designated pilotage fairway

	Cat.2	Cat.3	Bording area*
Härnö/Storön - Bollsta	80/15/5	90/16/5,5	a
Bay of Sundsvall - Bollsta	80/15/5	90/16/5,5	a
Härnö/Storön - Väja	80/15/5	90/16/5,5	a
Bay of Sundsvall - Väja	80/15/5	90/16/5,5	a
Härnö/Storön - Lugnvik	80/15/5	90/16/5,5	a
Bay of Sundsvall - Lugnvik	80/15/5	90/16/5,5	a
Härnö/Storön - Utansjö	80/15/5	90/16/5,5	a
Bay of Sundsvall - Utansjö	80/15/5	90/16/5,5	a

Pilotage line

3) Härnösand	62°39,30' N 017°58,60' E	62°38,85' N 017°58,60' E
--------------	--------------------------	--------------------------

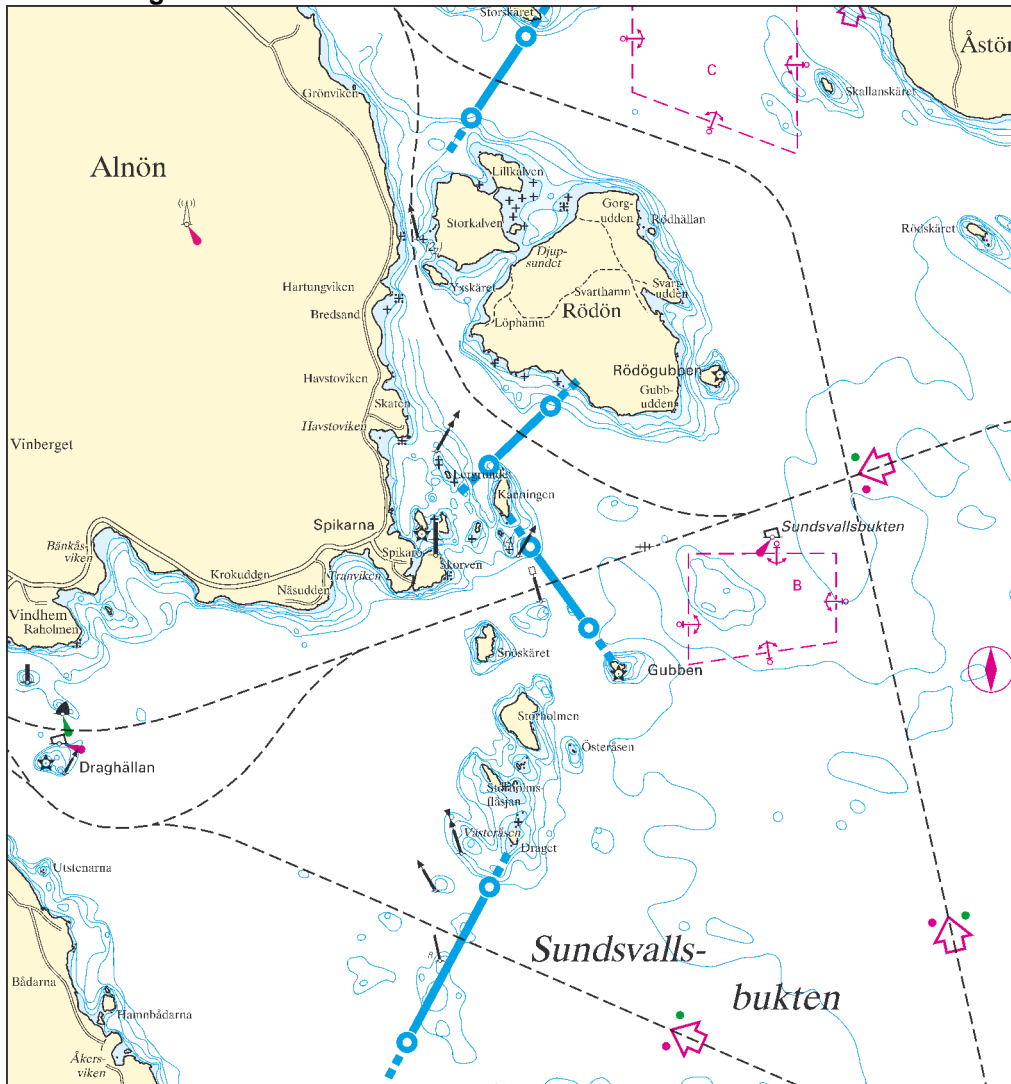
Designated pilotage fairway

	Cat.2	Cat.3	Bording area*
Bay of Sundsvall - Härnösand	90/16/-	100/17/-	a
Härnö - Härnösand	90/16/-	100/17/-	a

***Bording area**

- a) Bay of Sundsvall 2,5 M east of Gubben

Ga2 - Pilotage lines Sundsvall



Pilotage line

1) Sundsvall N 1	62°25,30' N 017°33,35' E	62°24,75' N 017°32,55' E
2) Sundsvall N 2	62°22,80' N 017°33,70' E	62°22,40' N 017°32,80' E

Designated pilotage fairway

	Cat.2	Cat.3	Bording area*
Bay of Sundsvall - east of Alnö - Söråker	80/14/4,5	90/14/4,5	a
Bay of Sundsvall - east of Alnö - Östrand	90/16/-	100/17/-	a
Bay of Sundsvall - east of Alnö - Tunadal	70/14/4,5	70/14/4,5	a

Pilotage line

3) Sundsvall S 1	62°21,85' N 017°33,40' E	62°21,30' N 017°34,25' E
4) Sundsvall S 2	62°19,55' N 017°32,80' E	62°18,50' N 017°31,60' E

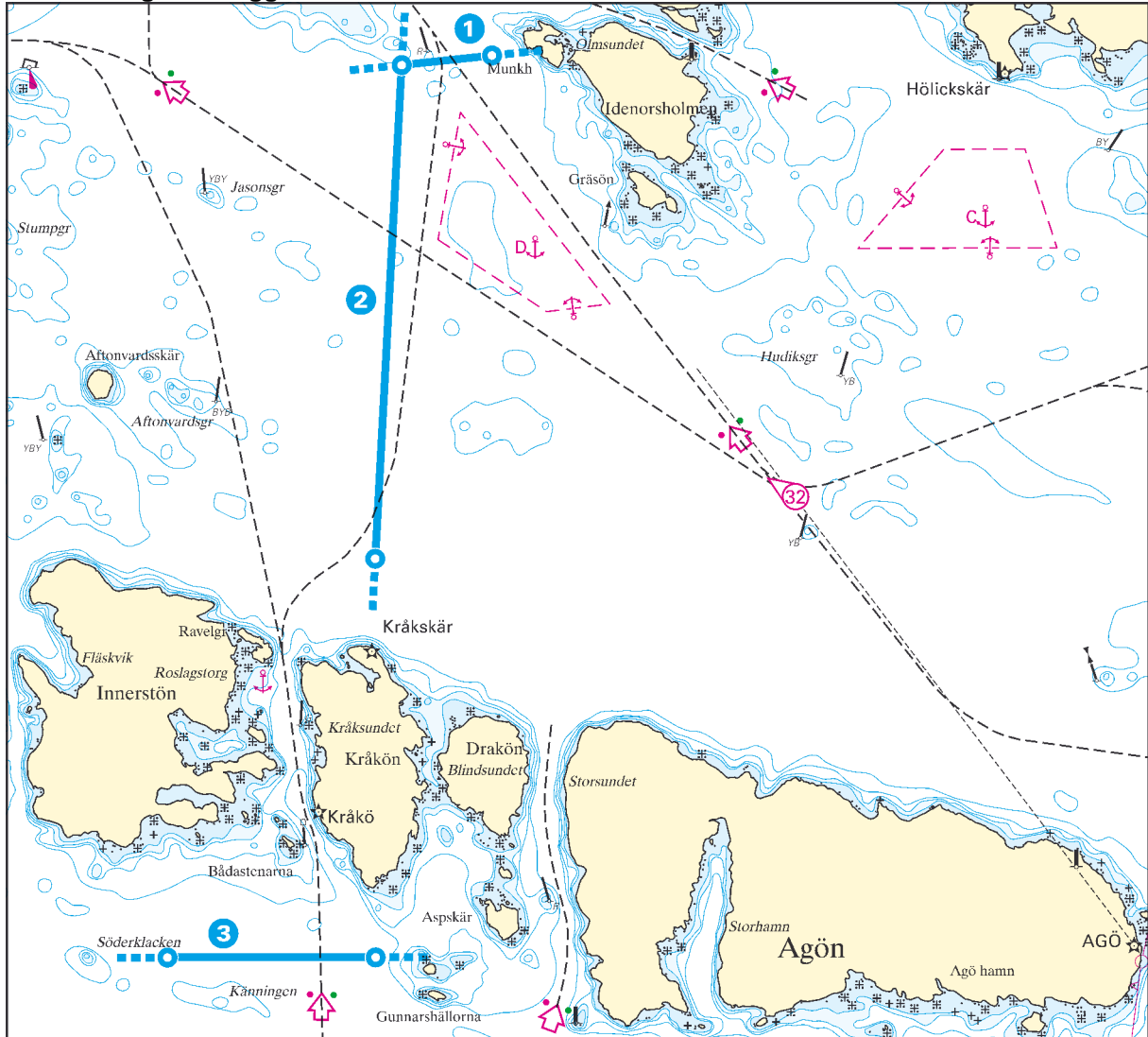
Designated pilotage fairway

	Cat.2	Cat.3	Bording area*
Bay of Sundsvall – west of Alnö - Söråker	70/14/4,5	70/14/4,5	a
Bay of Sundsvall - west of Alnö - Östrand	70/14/4,5	70/14/4,5	a
Bay of Sundsvall - west of Alnö - Tunadal	90/16/-	100/17/-	a
Bay of Sundsvall - Kubikenborg	90/16/-	100/17/-	a
Bay of Sundsvall - Sundsvall	90/16/-	100/17/-	a
Bay of Sundsvall - Stockvik	90/16/-	100/17/-	a

***Bording area**

a) Bay of Sundsvall 2,5 M east of Gubben

Ga3 - Pilotage lines Iggesund och Hudiksvall



Pilotage line

1) Agö N	61°37,20' N 017°19,90' E	61°37,25' N 017°20,90' E
2) Agö V	61°37,20' N 017°19,90' E	61°34,60' N 017°19,60' E

Designated pilotage fairway

	Cat.2	Cat.3	Bording area*
At sea south of Hornslandet - Hudiksvall	80/15/-	90/16/-	b,d
At sea south of Hornslandet - Iggesund (Skärnäs)	80/15/-	90/16/-	b,d

Pilotage line

3) Kråksundet	61°32,50' N 017°17,30' E	61°32,50' N 017°19,60' E
---------------	--------------------------	--------------------------

Designated pilotage fairway

	Cat.2	Cat.3	Bording area*
At sea south of Hällgrund - Kråksundet - Hudiksvall	80/15/-	90/16/-	d
At sea south of Hällgrund - Kråksundet - Iggesund (Skärnäs)	80/15/-	90/16/-	d

***Bording area**

- b) between Hällgrund light and Storjungfrun
- d) 1,5 M south of Hornsudda (after arrangement)

Ga4 - Pilotage line Stugsund, Långrör and Sandarne



Pilotage line

1) Hällgrund 61°16,60' N 017°19,30' E 61°15,40' N 017°19,15' E

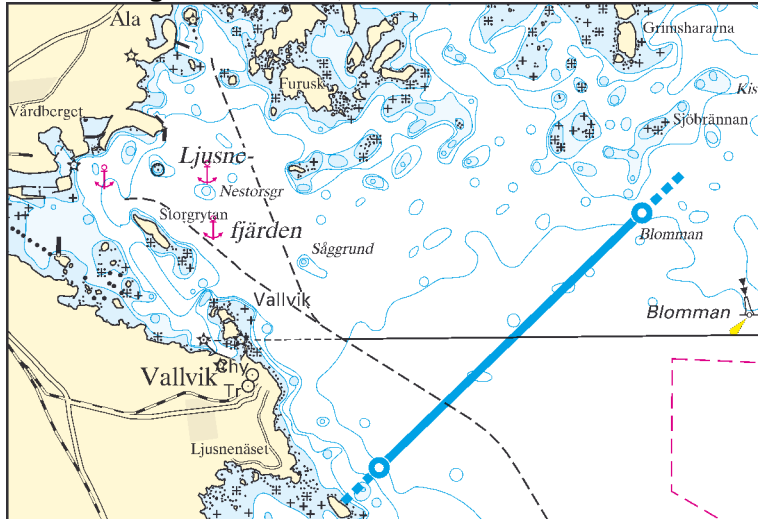
Designated pilotage fairway

	Cat.2	Cat.3	Bording area*
At sea south of Hällgrund - Stugsund	80/15/-	90/16/-	b
At sea south of Hällgrund – Prästhölen – Långrör/Sandarne	80/15/-	90/16/-	b
At sea south of Hällgrund – Myrskär – Långrör/Sandarne	80/15/-	90/16/-	b

***Bording area**

b) between Hällgrund light and Storsund

Ga5 - Pilotage line Orrskär, Vallvik and Ala

**Pilotage line**

1) Blomman

61°12,20' N 017°15,50' E 61°10,75' N 017°12,40' E

Designated pilotage fairway

At sea south of Hällgrund - Ala
 At sea south of Hällgrund - Orrskär
 At sea south of Hällgrund - Vallvik

Cat.2**Cat.3****Bording area***

80/15/-

90/16/-

b

80/15/-

90/16/-

b

80/15/-

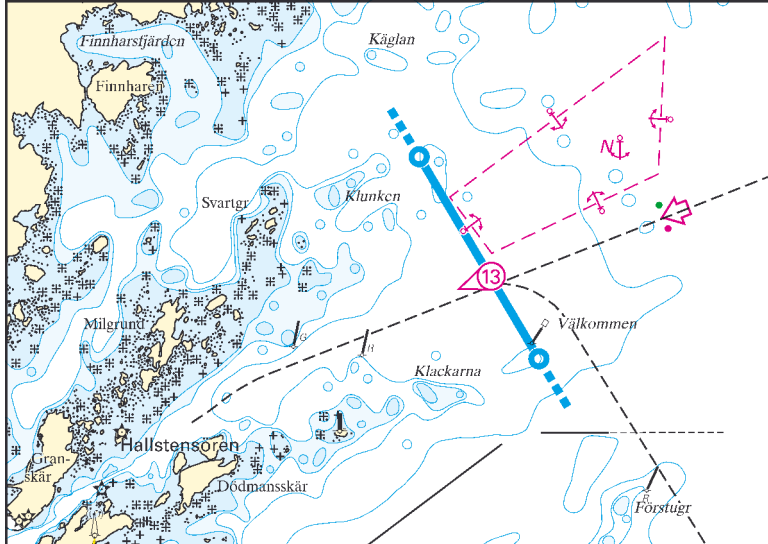
90/16/-

b

***Bording area**

b) between Hällgrund light and Storzjungfrun

Ga6 - Pilotage line Norrsundet



Pilotage line

1) Norrsundet 60°58,50' N 017°14,15' E 60°57,35' N 017°15,55' E

Designated pilotage fairway

At sea south of Hällgrund - Norrsundet

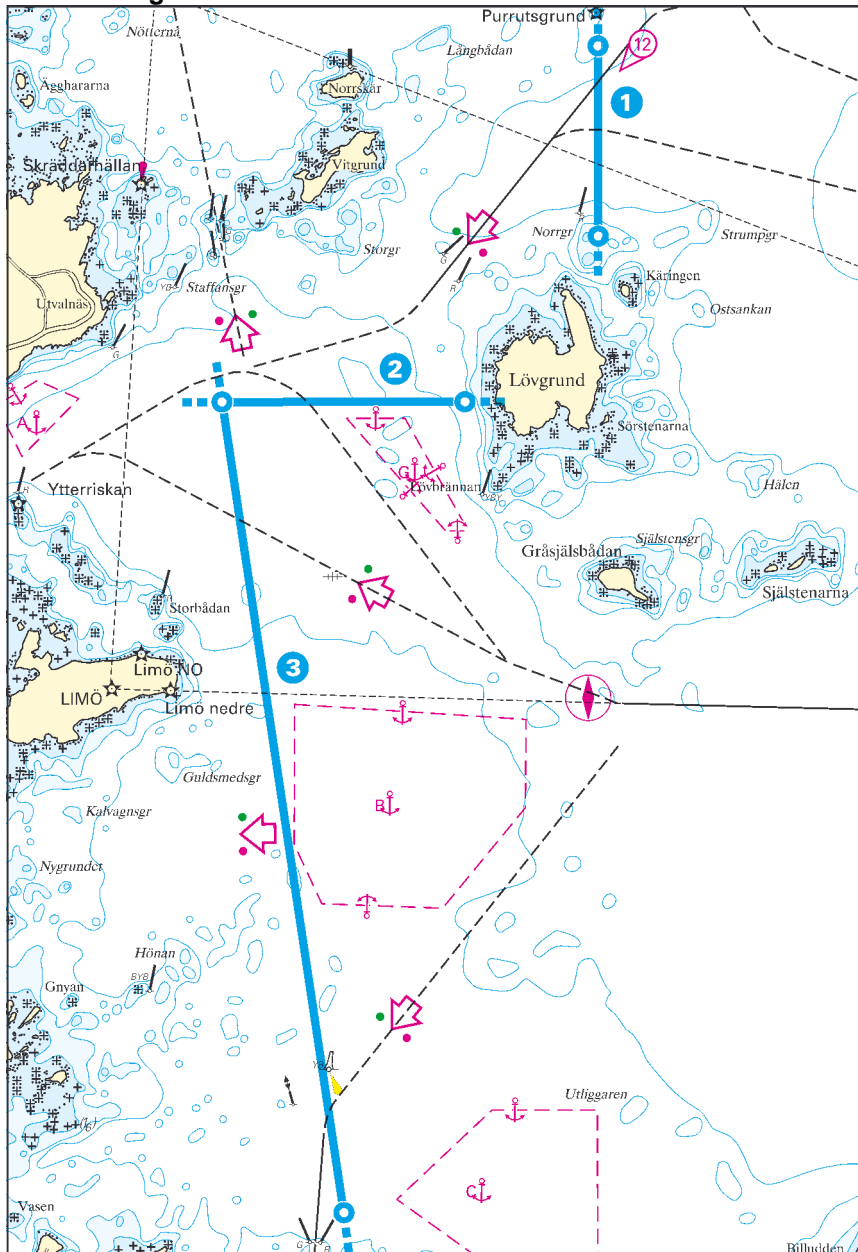
Cat.2	Cat.3	Bording area*
-------	-------	---------------

80/15/-	90/16/-	b,c
---------	---------	-----

***Bording area**

- b) between Hällgrund light and Storjungfrun
- c) south of Gråsjälsbådan

Ga7 - Pilotage lines Gävle



Pilotage line

1) Purrutgrund	60°46,75' N 017°27,25' E	60°45,60' N 017°27,25' E
2) Gråsjälsbådan N	60°44,60' N 017°22,60' E	60°44,60' N 017°25,60' E

Designated pilotage fairway

	Cat.2	Cat.3	Bording area*
Gråsjälsbådan - Norrsundet	80/15/-	90/16/-	c
Gråsjälsbådan - Bönan	80/15/-	90/16/-	c
Gråsjälsbådan - Gävle	80/15/-	90/16/-	c

Pilotage line

3) Gråsjälsbådan S	60°44,60' N 017°22,60' E	60°39,70' N 017°24,10' E
--------------------	--------------------------	--------------------------

Designated pilotage fairway

	Cat.2	Cat.3	Bording area*
Gråsjälsbådan - Bönan	80/15/-	90/16/-	c
Gråsjälsbådan - Gävle	80/15/-	90/16/-	c
Gråsjälsbådan - Skutskär	90/16/-	100/17/-	c

***Bording area**

c) south of Gråsjälsbådan