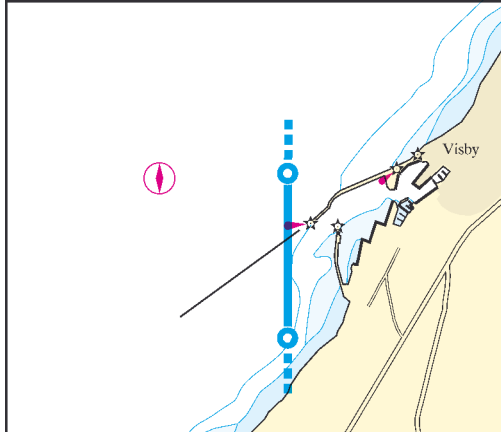


<b>Designated pilotage fairways</b>	<b>CHART</b>
Visby - Visby roads .....	<b>Ka1</b>
Klintehamn - off Klintehamn .....	<b>Ka2</b>
Kappelshamn - Kappelshamnsviken .....	<b>Ka3</b>
Storugns - Kappelshamnsviken.....	<b>Ka3</b>
Strå (Fårösund) - Bungeör.....	<b>Ka4</b>
Slite - south of Magö.....	<b>Ka5</b>
Västervik - Västervik approach.....	<b>Ka6</b>
Flivik - Strupö Ljungskär .....	<b>Ka7</b>
Simpevarp - Bredgrund .....	<b>Ka8</b>
Oskarshamn - Furö.....	<b>Ka9</b>
Jättersön - Lillgrund .....	<b>Ka10</b>
Jättersön - south of Vällö - Dämman.....	<b>Ka10</b>
Kalmar - Krongrundet .....	<b>Ka11</b>
Kalmar - Trädgårdsgrund .....	<b>Ka11</b>
Krongrundet - Trädgårdsgrund.....	<b>Ka11</b>
Degerhamn - off Degerhamn.....	<b>Ka12</b>
Bergkvara - off Bergkvara.....	<b>Ka13</b>
Karlskrona (Handelshamnen) - Karlskrona approach .....	<b>Ka14</b>
Karlskrona (Verköhamnen) - Karlskrona approach.....	<b>Ka14</b>
Ronnebyhamn - Gåsfeten .....	<b>Ka15</b>
Karlshamn (Centralhamnen/Kölö/Oxhaga/Stilleryd) - Karlshamns roads .....	<b>Ka16</b>
Stärnö vindhamn (Karlshamn) - Karlshamns roads .....	<b>Ka16</b>
Elleholm – Karlshamn roads .....	<b>Ka16</b>
Sölvesborg - Spättgrund.....	<b>Ka17</b>
Åhus - Pällgrund .....	<b>Ka18</b>
Simrishamn - Nedjan .....	<b>Ka19</b>
Designated pilotage fairways with no compulsory pilotage.....	<b>Ka20</b>

**Ka1 - Pilotage line Visby**



**Pilotage line**

1) Visby

57°38,30' N 018°16,00' E 57°37,60' N 018°16,00' E

**Designated pilotage fairway**

Visby - Visby roads

**Cat.2**

**Cat.3**

**Bording area\***

80/15/-

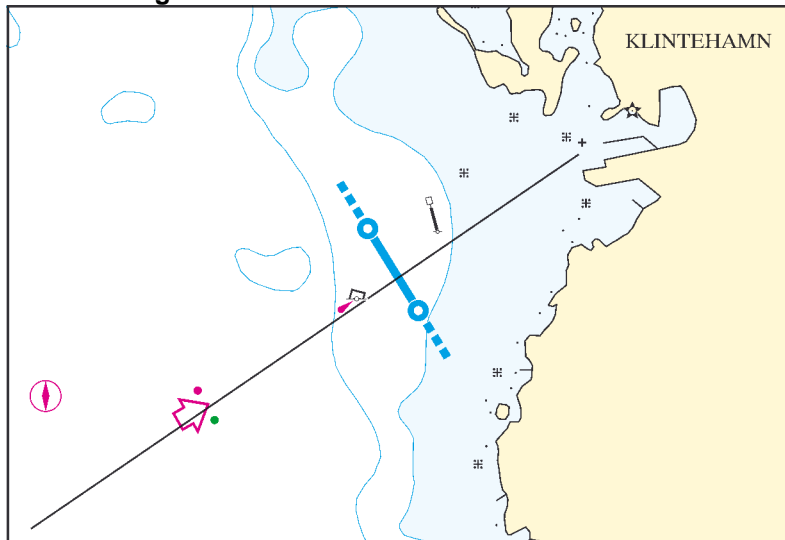
90/16/-

a

**\*Bording area**

a) Visby roads

**Ka 2 - Pilotage line Klintehamn**



**Pilotage line**

1) Klintehamn	57°22,95' N	018°09,20' E	57°22,60' N	018°09,60' E
---------------	-------------	--------------	-------------	--------------

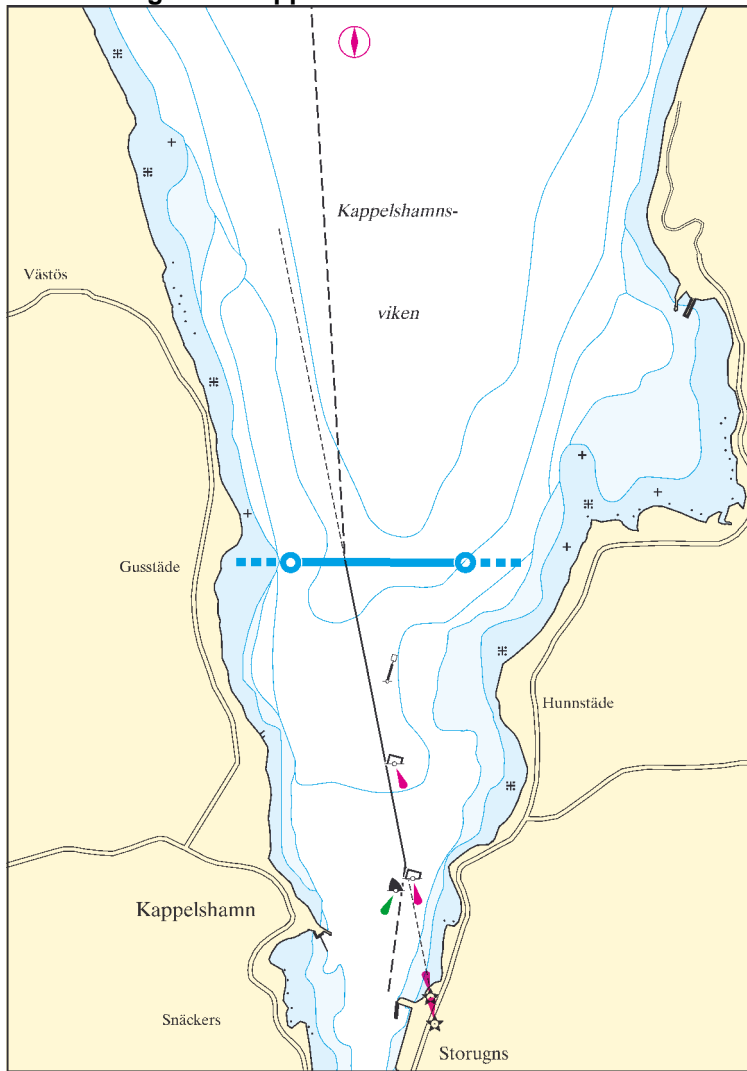
**Designated pilotage fairway**

	<b>Cat.2</b>	<b>Cat.3</b>	<b>Bording area*</b>
Klintehamn - off Klintehamn	80/15/-	90/16/-	e

**\*Bording area**

e) off Klintehamn

**Ka3 - Pilotage line Kappelshamnsviken**



**Pilotage line**

1) Kappelshamnsviken 57°52,50' N 018°47,10' E 57°52,50' N 018°48,50' E

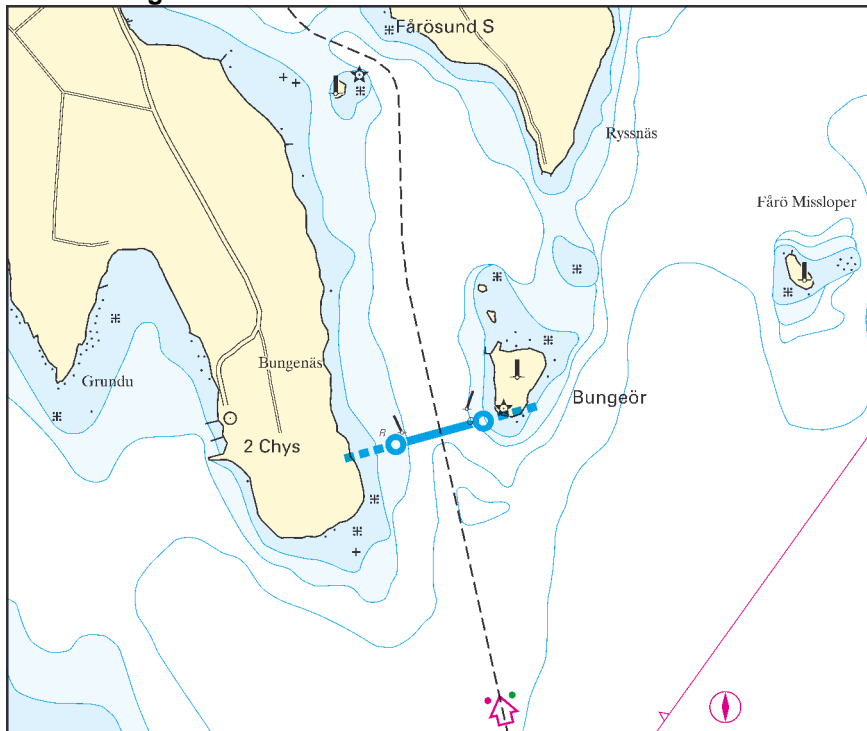
**Designated pilotage fairway**

	<b>Cat.2</b>	<b>Cat.3</b>	<b>Bording area*</b>
Kappelshamn - Kappelshamnsviken	80/15/-	90/16/-	b
Storugns - Kappelshamnsviken	80/15/-	90/16/-	b

**\*Bording area**

b) at entrance to Kappelshamnsviken

**Ka4 - Pilotage line södra Fårösund**



**Pilotage line**

1) Bungeör 57°49,30' N 019°06,15' E 57°49,40' N 019°06,85' E

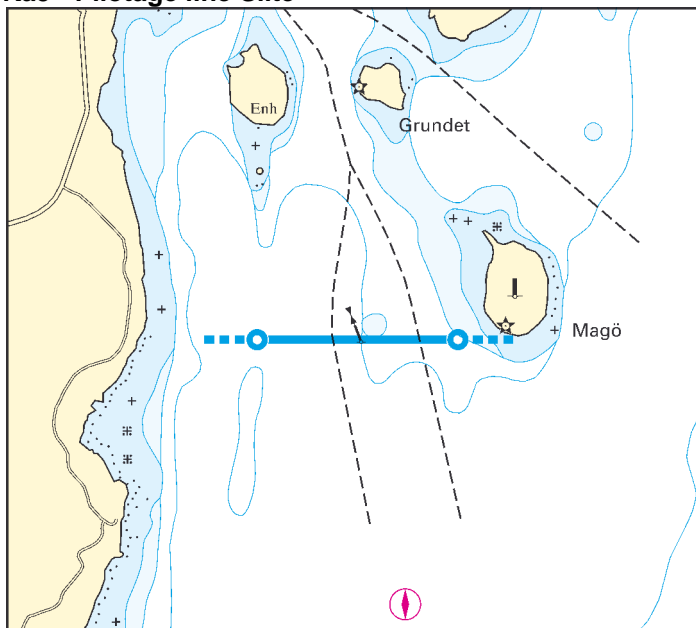
**Designated pilotage fairway**

	Cat.2	Cat.3	Bording area*
Strå (Fårösund) - Bungeör	80/15/-	90/16/-	c

**\*Bording area**

c) south of Bungeör light

**Ka5 - Pilotage line Slite**



**Pilotage line**

1) Magö 57°40,65' N 018°49,25' E 57°40,65' N 018°50,85' E

**Designated pilotage fairway**

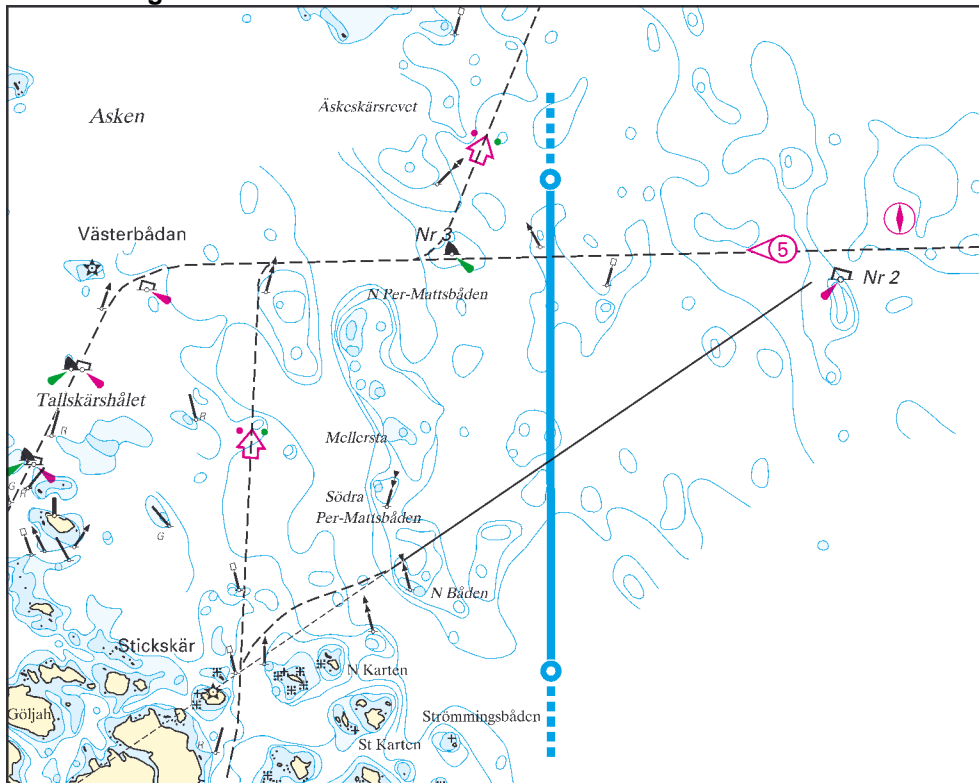
	Cat.2	Cat.3	Bording area*
Slite - south of Magö	80/15/-	90/16/-	d

Slite - south of Magö

**\*Bording area**

d) south of Magö

**Ka6 - Pilotage line Västervik**



**Pilotage line**

1) Västerviks approach

57°45,15' N 016°47,55' E 57°43,40' N 016°47,55' E

**Designated pilotage fairway**

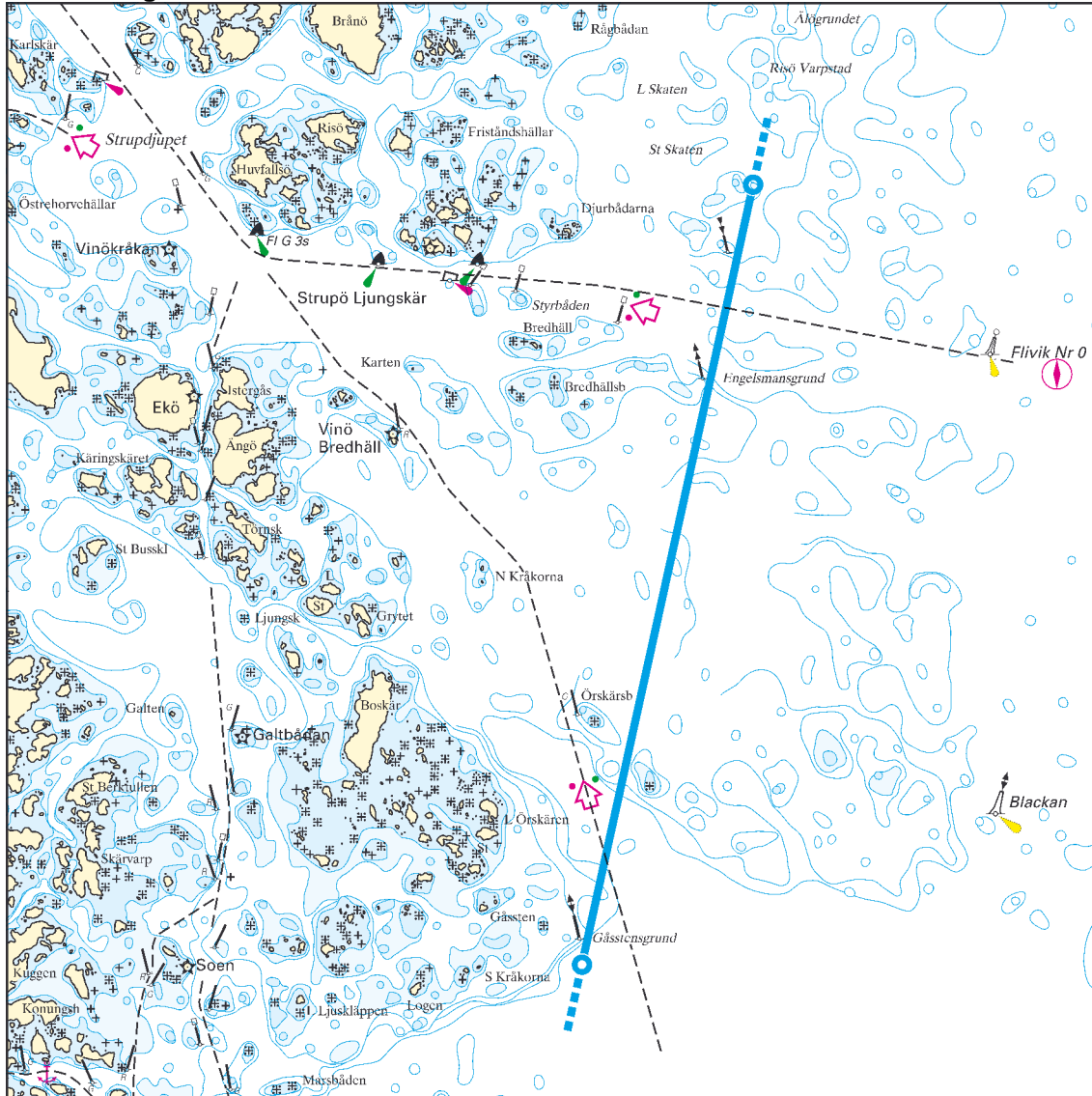
Västervik - Västervik approach

Cat.2	Cat.3	Bording area*
80/15/-	90/16/-	f

**\*Bording area**

f) buoy nr 2 (2,7 M west of Västervik approach)

**Ka7 - Pilotage line Flivik**



**Pilotage line**

1) Flivik 57°31,10' N 016°48,90' E 57°27,65' N 016°47,50' E

**Designated pilotage fairway**

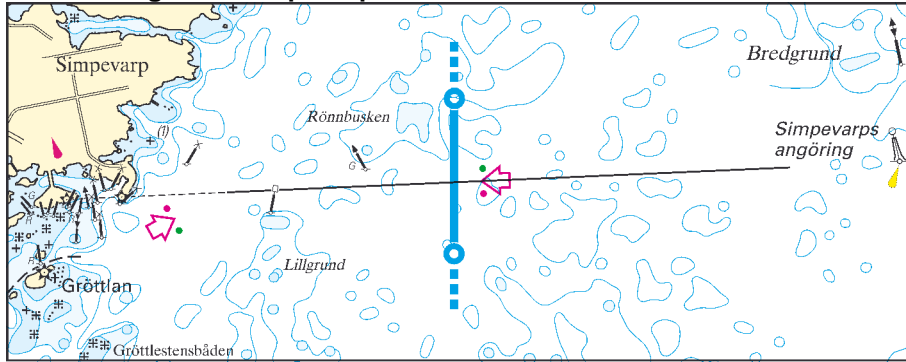
	Cat.2	Cat.3	Bording area*
Flivik - Strupö Ljungskär	70/14/4,5	70/14/4,5	g

**\*Bording area**

g) Flivik nr 0



**Ka8 - Pilotage line Simpevarp**



**Pilotage line**

1) Simpevarp 57°24,90' N 016°42,75' E 57°24,35' N 016°42,75' E

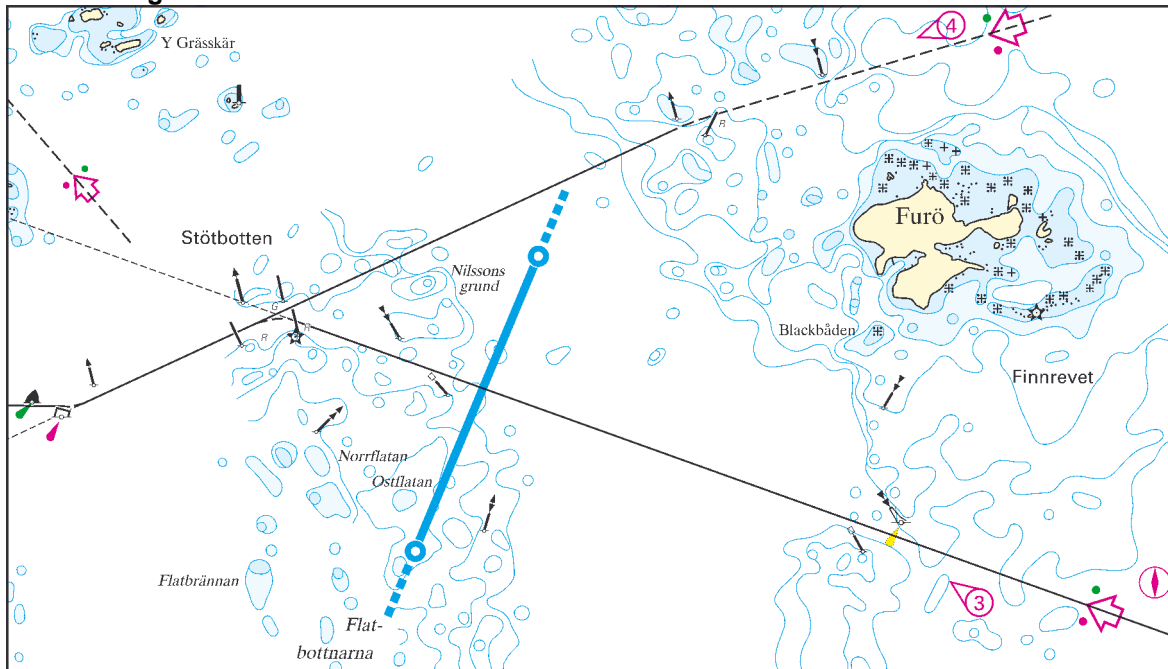
**Designated pilotage fairway**

	Cat.2	Cat.3	Bording area*
Simpevarp - Bredgrund	80/15/5	80/15/5	h

**\*Bording area**

h) Bredgrund

**Ka9 - Pilotage line Oskarshamn**



**Pilotage line**

1) Furö 57°16,80' N 016°34,80' E 57°15,75' N 016°34,00' E

**Designated pilotage fairway**

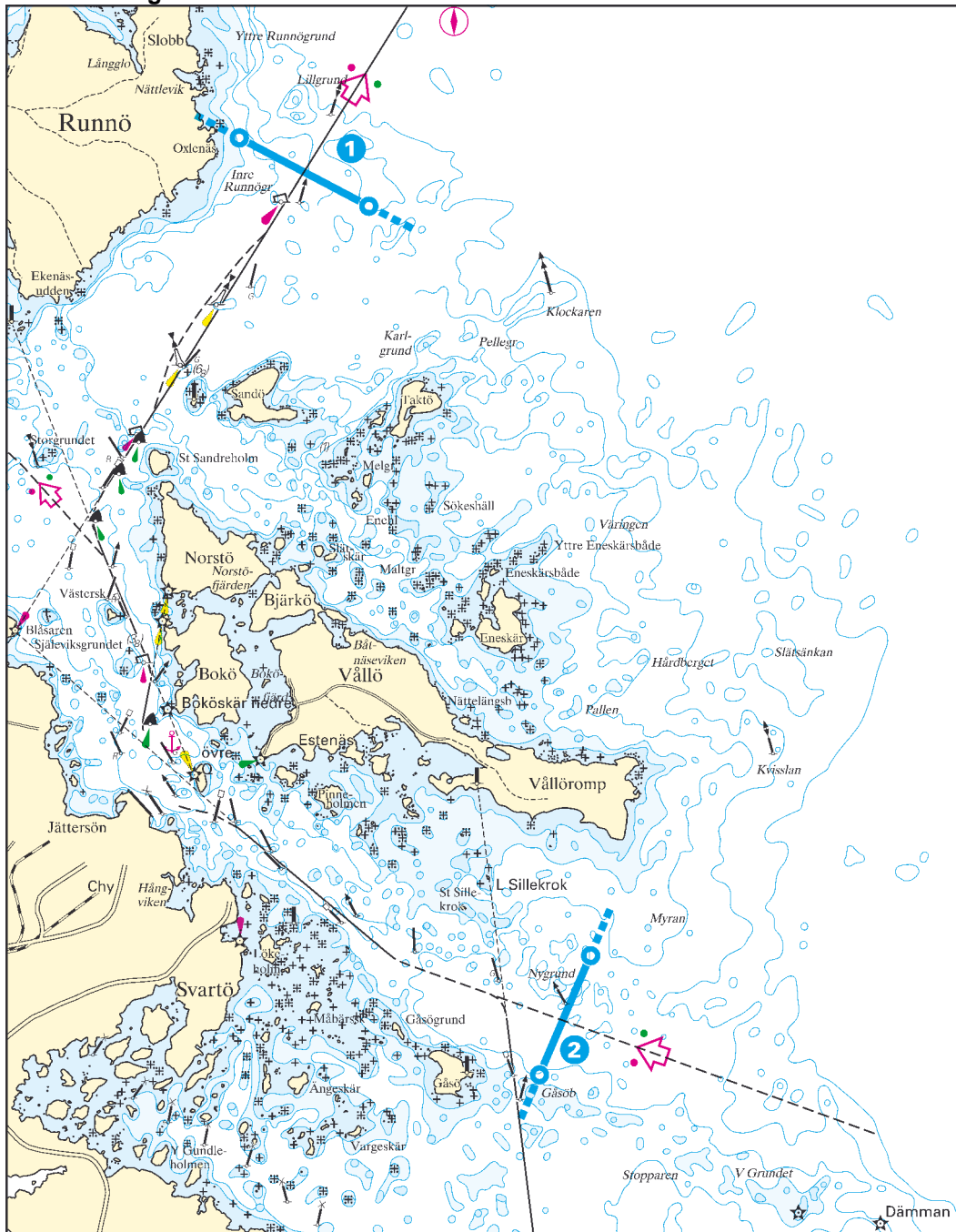
Oskarshamn - Furö

Cat.2	Cat.3	Bording area*
80/15/-	90/16/-	j

**\*Bording area**

j) southeast of Furö

**Ka10 - Pilotage line Jättersön**



**Pilotage line**

1) Jättersön 57°09,80' N 016°34,50' E 57°09,40' N 016°35,90' E

**Designated pilotage fairway**

	<b>Cat.2</b>	<b>Cat.3</b>	<b>Bording area*</b>
Jättersön - Lillgrund	80/15/-	90/16/-	k

**Pilotage line**

2) Dämman 57°05,00' N 016°38,30' E 57°04,30' N 016°37,75' E

**Designated pilotage fairway**

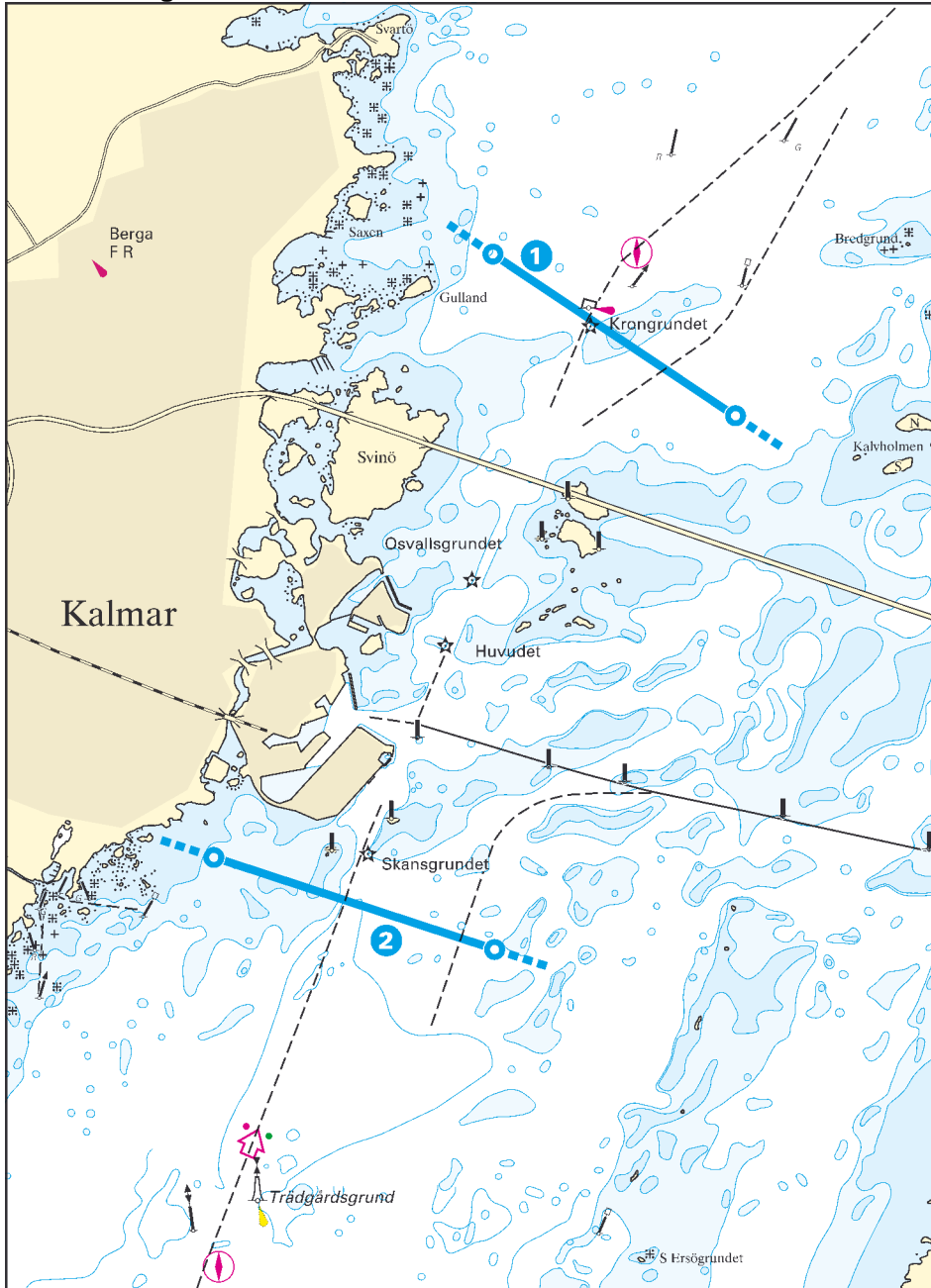
	<b>Cat.2</b>	<b>Cat.3</b>	<b>Bording area*</b>
Jättersön - south of Vällö - Dämman	70/14/4,5	70/14/4,5	l

**\*Bording area**

k) Lillgrund

l) Dämman

Ka11 - Pilotage line Kalmar



**Pilotage line**

1) Krongrundet 56°41,70' N 016°23,50' E 56°41,00' N 016°25,40' E

**Designated pilotage fairway** **Cat.2** **Cat.3** **Bording area\***

Kalmar - Krongrundet 70/14/4,5 70/14/4,5 m

Krongrundet - Trädgårdsgrund 70/14/4,5 70/14/4,5 m,n

**Pilotage line**

2) Trädgårdsgrund 56°39,10' N 016°21,30' E 56°38,70' N 016°23,50' E

**Designated pilotage fairway** **Cat.2** **Cat.3** **Bording area\***

Kalmar - Trädgårdsgrund 70/14/4,5 70/14/4,5 n

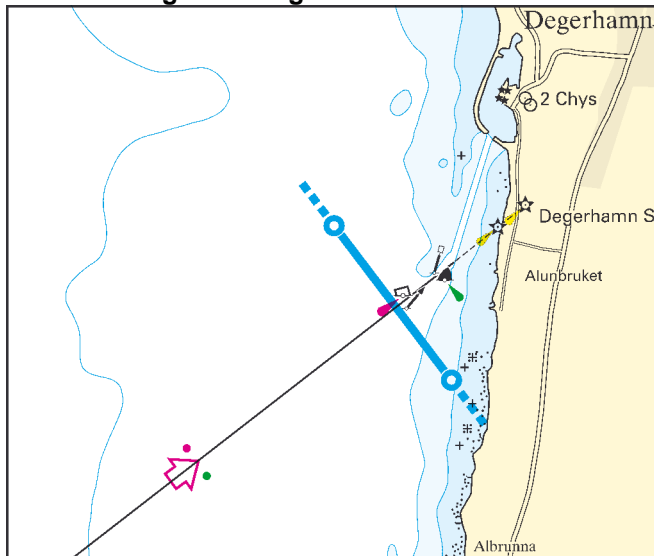
Krongrundet - Trädgårdsgrund 70/14/4,5 70/14/4,5 m,n

**\*Bording area**

n) Trädgårdsgrund

m) Krongrundet

**Ka12 - Pilotage line Degerhamn**



**Pilotage line**

1) Degerhamn

56°20,75' N 016°23,30' E 56°20,20' N 016°24,05' E

**Designated pilotage fairway**

Degerhamn - off Degerhamn

**Cat.2** **Cat.3** **Bording area\***

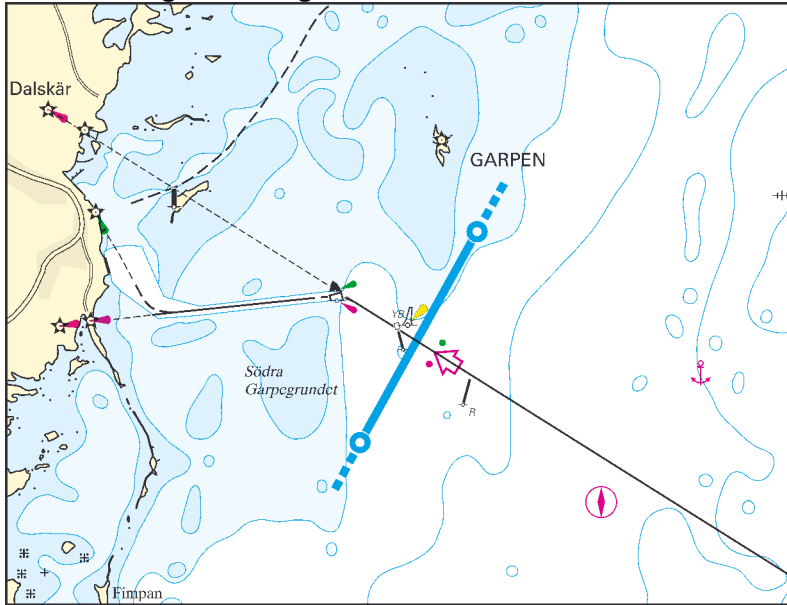
70/14/4,5 70/14/4,5

i

**\*Bording area**

i) at sea off the port

**Ka13 - Pilotage line Bergkvara**



**Pilotage line**

1) Bergkvara 56°23,10' N 016°07,95' E 56°22,35' N 016°07,20' E

**Designated pilotage fairway**

Bergkvara - off Bergkvara

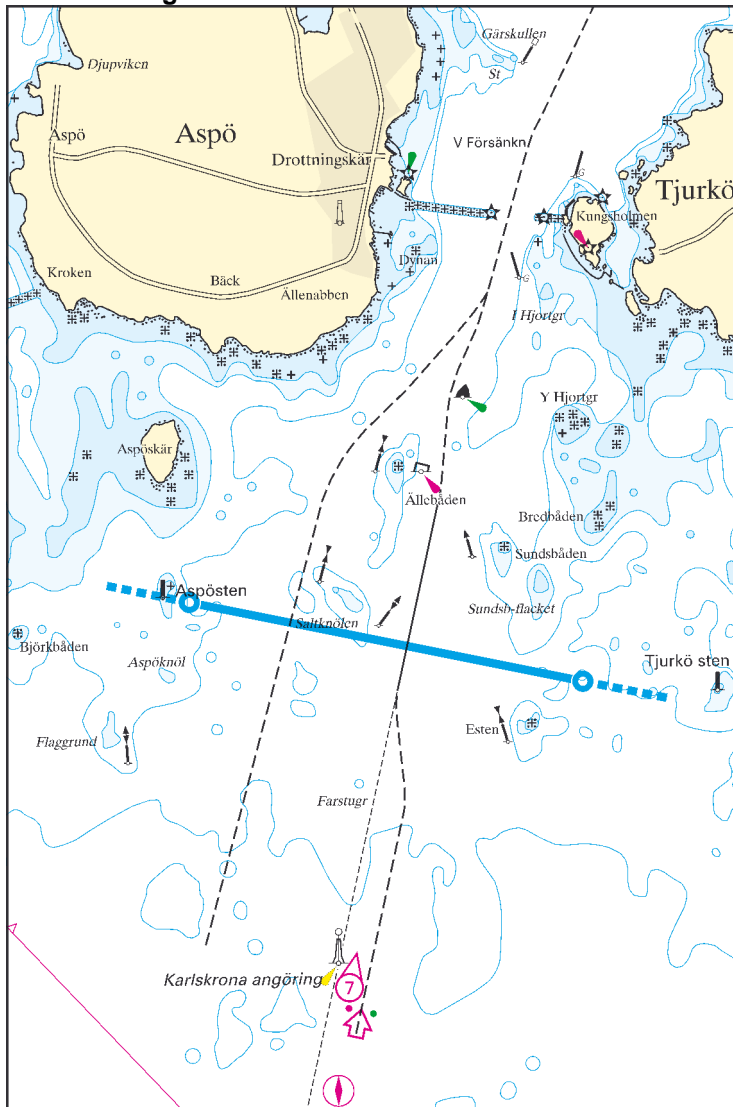
Cat.2	Cat.3	Bording area*
-------	-------	---------------

70/14/4,5	70/14/4,5	i
-----------	-----------	---

**\*Bording area**

i) at sea off the port

**Ka14 - Pilotage line Karlskrona**



**Pilotage line**

1) Karlskrona 56°04,85' N 015°32,20' E 56°04,50' N 015°35,20' E

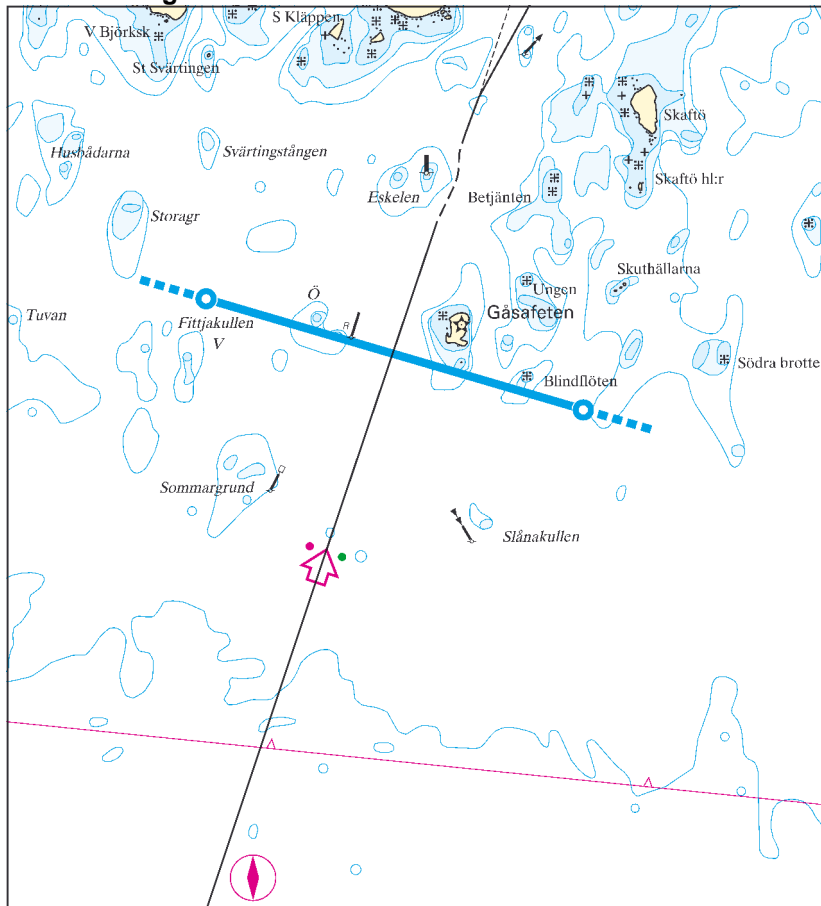
**Designated pilotage fairway**

	Cat.2	Cat.3	Bording area*
Karlskrona (handelshamnen) - Karlskrona approach	70/14/4,5	70/14/4,5	o
Karlskrona (Verköhamnen) - Karlskrona approach	70/14/-	90/16/-	o

**\*Bording area**

o) off Aspö

**Ka15 - Pilotage line Gåsfeten**



**Pilotage line**

1) Gåsfeten 56°07,40' N 015°11,80' E 56°07,00' N 015°14,20' E

**Designated pilotage fairway**

Ronnebyhamn - Gåsfeten

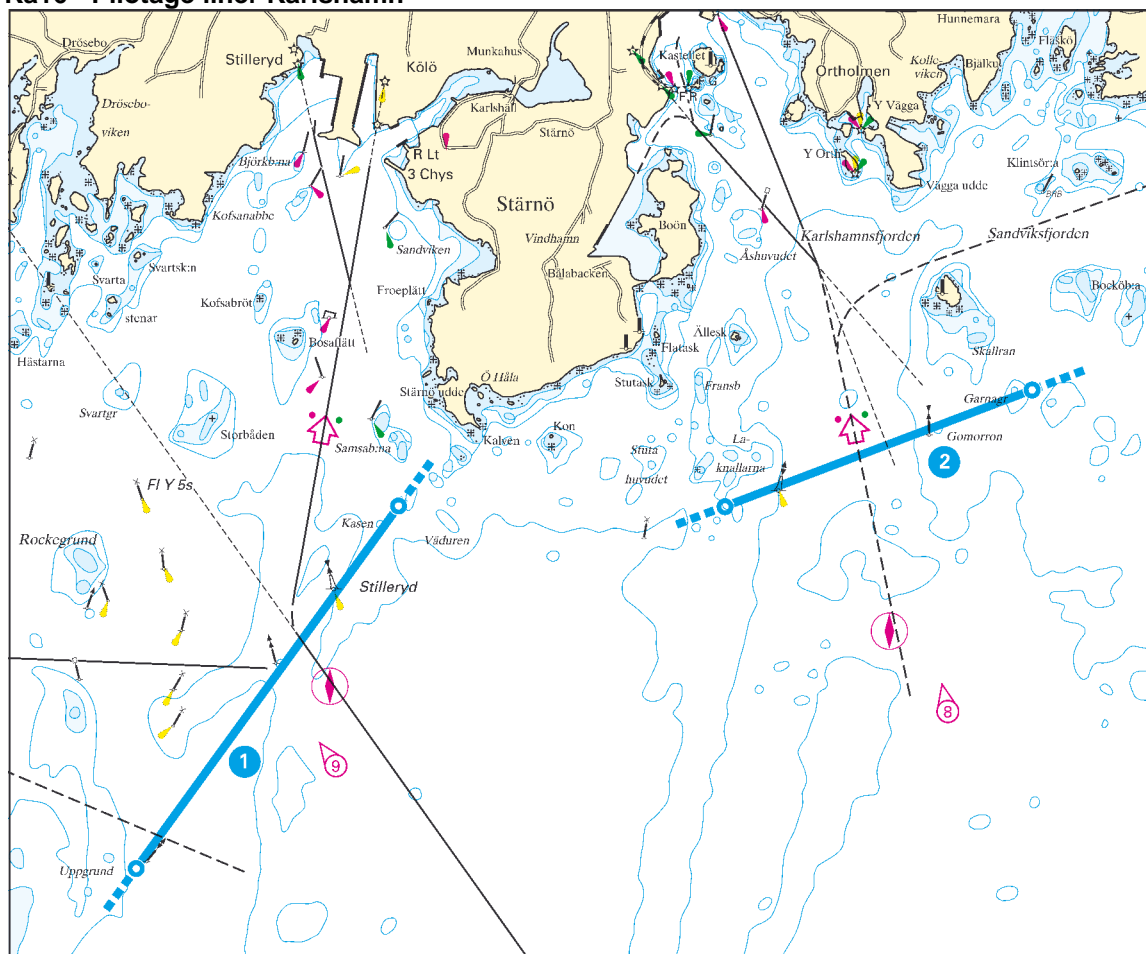
Cat.2	Cat.3	Bording area*
70/14/4,5	70/14/4,5	p

**\*Bording area**

p) off Gåsfeten



## Ka16 - Pilotage liner Karlshamn

**Pilotage line**

1 ) Karlshamn V 56°06,15' N 014°47,60' E 56°07,70' N 014°49,60' E

**Designated pilotage fairway**

	Cat.2	Cat.3	Bording area*
Karlshamn (Centralhamnen/Kölö/Oxhaga/Stilleryd) - Karlshamns roads	80/15/-	90/16/-	q,r
Stärnö vindhamn (Karlshamn) - Karlshamns roads	70/14/-	70/14/-	q,r
Elleholm - Karlshamns roads	70/14/4,5	70/14/4,5	q,r

**Pilotage line**

2 ) Karlshamn O 56°07,70' N 014°52,10' E 56°08,20' N 014°54,45' E

**Designated pilotage fairway**

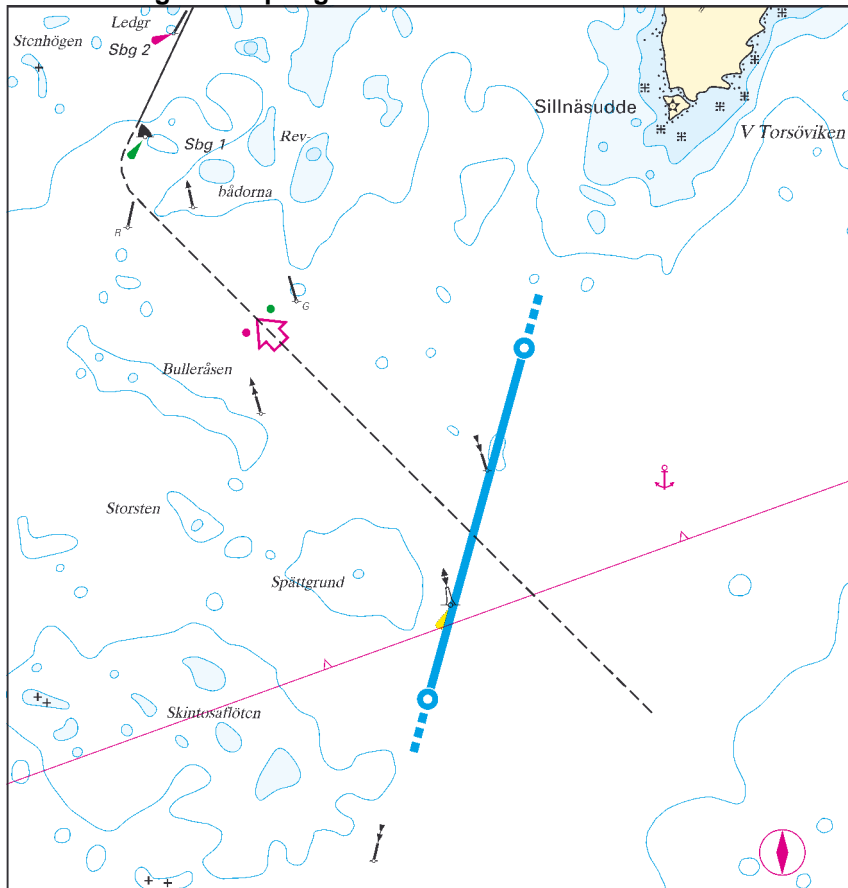
	Cat.2	Cat.3	Bording area*
Karlshamn (Centralhamnen/Kölö/Oxhaga/Stilleryd) - Karlshamns roads	80/15/-	90/16/-	q,r

**\*Bording area**

q ) Karlshamn East

r ) Karlshamn West

**Ka17- Pilotage line Spättgrund**



**Pilotage line**

1) Spättgrund

55°58,95' N 014°35,75' E 55°57,70' N 014°35,15' E

**Designated pilotage fairway**

**Cat.2 Cat.3 Bording area\***

Sölvesborg - Spättgrund

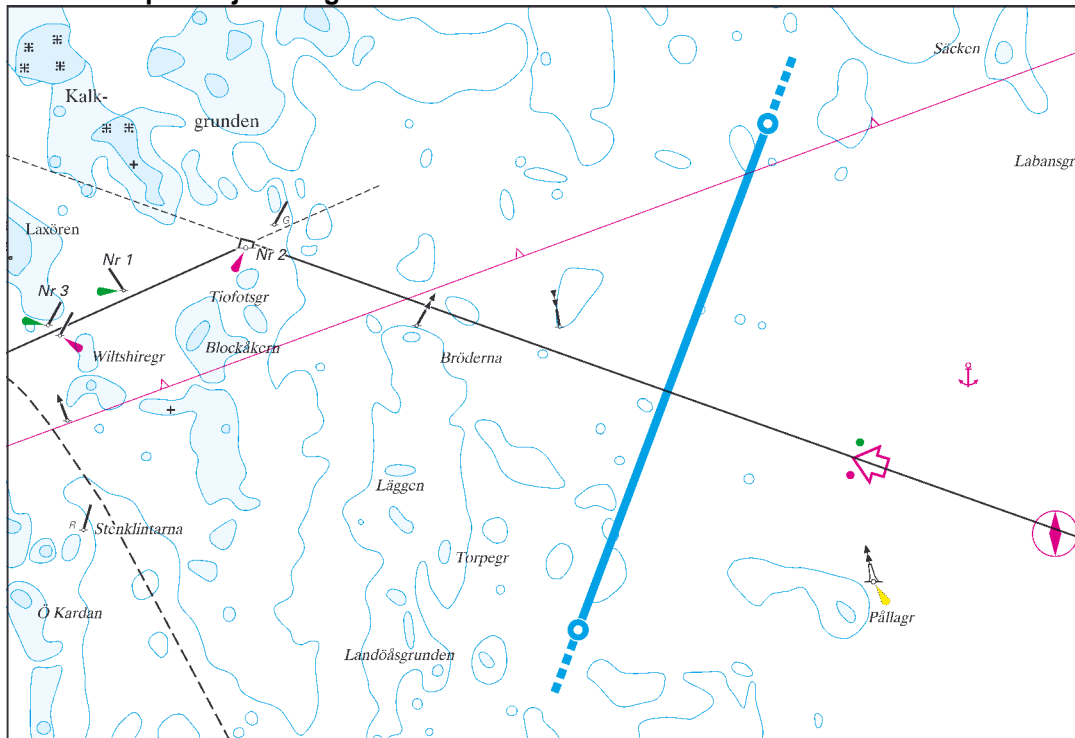
70/14/4,5 70/14/4,5

s

**\*Bording area**

s) Spättgrund

**Ka18 - Lotspliktlinje Pållagrund**



**Pilotage line**

1) Pållagrund 55°56,40' N 014°26,95' E 55°54,60' N 014°25,75' E

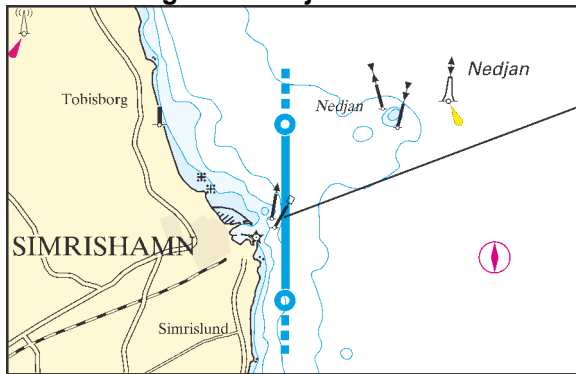
**Designated pilotage fairway**

	Cat.2	Cat.3	Bording area*
Åhus - Pållagrund	70/14/4,5	70/14/4,5	t

**\*Bording area**

t) Pållagrund

**Ka19 - Pilotage line Nedjan**



**Pilotage line**

1) Nedjan 55°34,25' N 014°21,90' E 55°33,00' N 014°21,90' E

**Designated pilotage fairway**

	<b>Cat.2</b>	<b>Cat.3</b>	<b>Bording area*</b>
Simrishamn - Nedjan	70/14/4,5	70/14/4,5	u

**\*Bording area**

u) Nedjan

**Ka20 - Designated pilotage fairways with no compulsory pilotage**

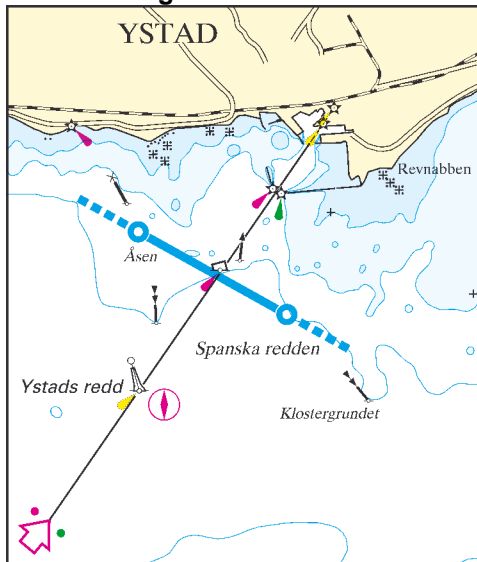
<b>Designated pilotage fairway</b>	<b>Bording area*</b>
Furö – Västervik approach	f,i
Krongrundet – Furö/Blå Jungfrun	j,m
Krongrundet - Lillgrund	m,k
Krongrundet - Sillåsen	m,v
Trädgårdsgrund - Utgrunden	n,x

**\*Bording area**

- f ) boj nr 2 (2,7 M väst Västervik approach)
- j) southeast of Furö
- k) Lillgrund
- m) Krongrundet
- n) Trädgårdsgrund
- x) Utgrunden

<b>Designated pilotage fairways</b>	<b>CHART</b>
Ystad - Ystad roads .....	<b>Ma 1</b>
Trelleborg - Trelleborg roads .....	<b>Ma 2</b>
Malmö - Malmö roads .....	<b>Ma 3</b>
Malmö (Swede Harbour) - Pinhättan .....	<b>Ma 3</b>
Barsebäcksverket - Malmö roads .....	<b>Ma 4</b>
Landskrona - Landskrona roads .....	<b>Ma 5</b>
Helsingborg - Helsingborg roads .....	<b>Ma 6</b>
Höganäs - Höganäs roads .....	<b>Ma 7</b>
Halmstad – Halmstad roads .....	<b>Ma 8</b>
Falkenberg - Falkenberg roads .....	<b>Ma 9</b>
Varberg - Varberg roads .....	<b>Ma 10</b>
Ringhals - Varberg roads .....	<b>Ma 11</b>
Designated pilotage fairways with no compulsory pilotage .....	<b>Ma 12</b>

Ma1 - Pilotage line Ystad



**Pilotage line**

1) Ystad	55°24,75' N	013°47,30' E	55°24,15' N	013°49,15' E
----------	-------------	--------------	-------------	--------------

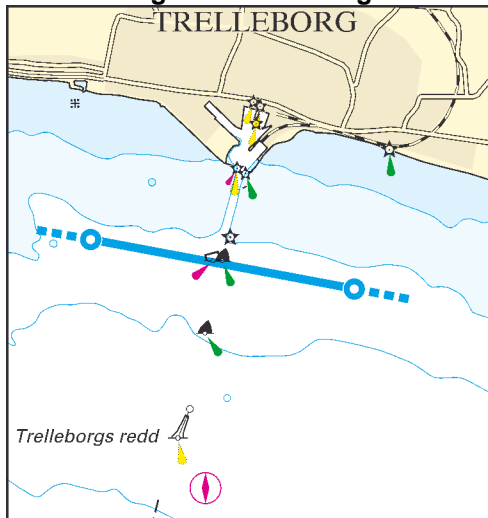
**Designated pilotage fairway**

	<b>Cat.2</b>	<b>Cat.3</b>	<b>Bording area*</b>
Ystad - Ystad roads	80/15/-	90/16/-	a

**\*Bording area**

a) Ystad roads

Ma2 - Pilotage line Trelleborg



**Pilotage line**

1) Trelleborg 55°21,40' N 013°07,20' E 55°21,05' N 013°10,50' E

**Designated pilotage fairway**

Trelleborg - Trelleborg roads

**Cat.2** **Cat.3** **Bording area\***

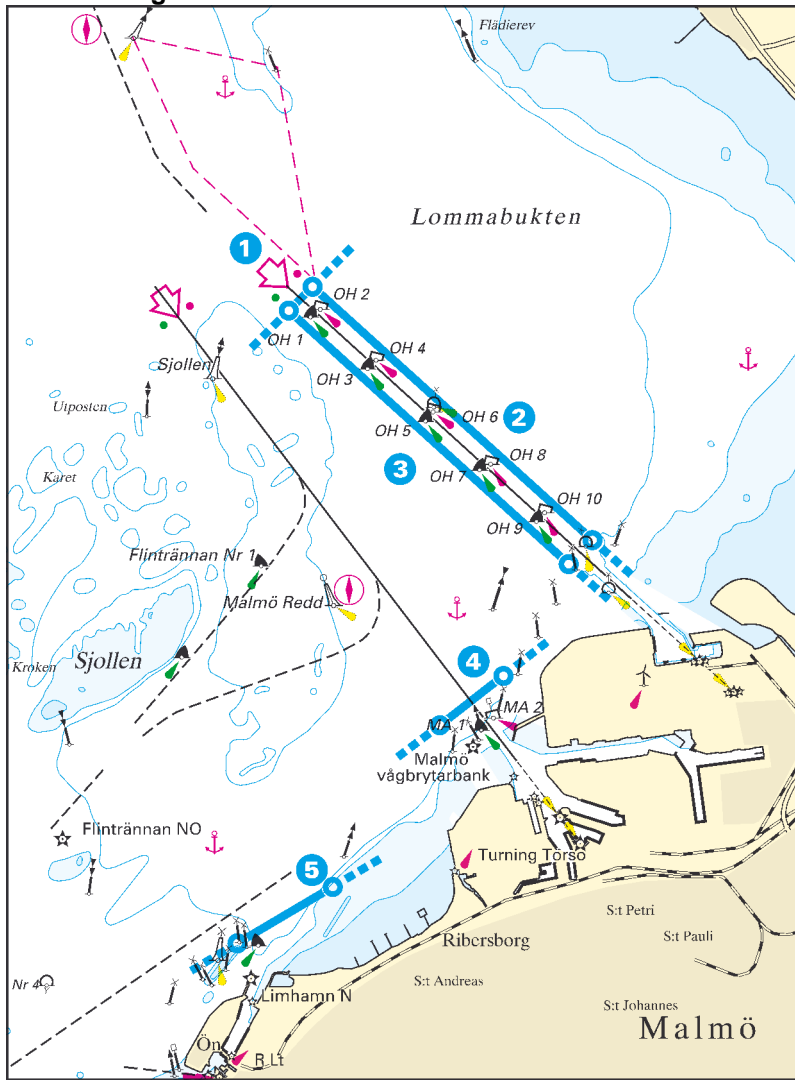
80/15/- 90/16/- b

**\*Bording area**

b) Trelleborg roads



Ma3 - Pilotage lines Malmö



**Pilotage line**

1) Malmö oljehamn V	55°40,60' N	012°56,25' E	55°40,77' N	012°56,55' E
2) Malmö oljehamn N	55°40,77' N	012°56,55' E	55°38,97' N	013°00,07' E
3) Malmö oljehamn S	55°40,60' N	012°56,25' E	55°38,80' N	012°59,77' E

**Designated pilotage fairway**

	Cat.2	Cat.3	Bording area*
Malmö (Swede Harbour) - Pinhättan	80/15/-	90/16/-	f *

**Pilotage line**

4) Malmö	55°37,65' N	012°58,15' E	55°38,00' N	012°58,95' E
----------	-------------	--------------	-------------	--------------

**Designated pilotage fairway**

	Cat.2	Cat.3	Bording area*
Malmö - Malmö roads	80/15/-	90/16/-	d,e *

**Pilotage line**

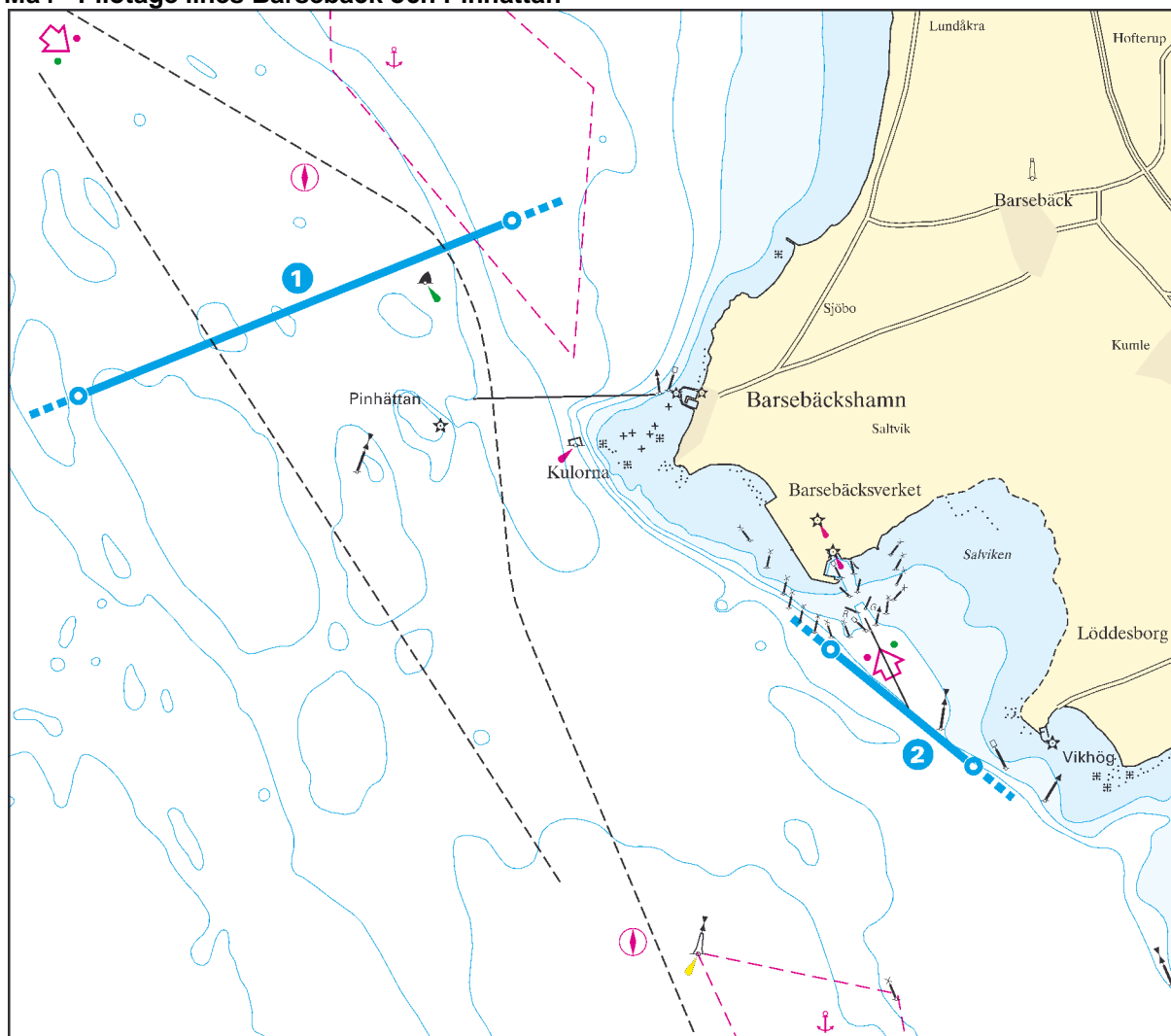
5) Limhamn	<b>Deleted</b>		
------------	----------------	--	--

**\*Bording area**

- d) Malmö roads
- e) the buoy at Vikhög (3 M southeast of Pinhättan)
- f) north of Pinhättan

\*Vessels with a draft of 8,0 meters or more arriving from the north or departing to the north shall embark and disembark the pilot at the boarding area situated 3 M north of Pinhättan.

## Ma4 - Pilotage lines Barsebäck och Pinhättan

**Pilotage line**

1) Pinhättan	55°45,40' N	012°48,65' E	55°46,30' N	012°52,60' E
--------------	-------------	--------------	-------------	--------------

**Designated pilotage fairway**

Malmö (Swede Harbour) - Pinhättan

Cat.2	Cat.3	Bording area*
-------	-------	---------------

80/15/-	90/16/-	f *
---------	---------	-----

**\*\*Bording area**

e) the buoy at Vikhög (3 M southeast of Pinhättan)

*\*Vessels with a draft of 8,0 meters or more arriving from the north or departing to the north shall embark and disembark the pilot at the boarding area situated 3 M north of Pinhättan.*

**Pilotage line**

2) Barsebäck	55°44,10' N	012°55,50' E	55°43,50' N	012°56,80' E
--------------	-------------	--------------	-------------	--------------

**Designated pilotage fairway**

Barsebäckverket - Malmö roads

Cat.2	Cat.3	Bording area*
-------	-------	---------------

80/15/5	80/15/5	d,e
---------	---------	-----

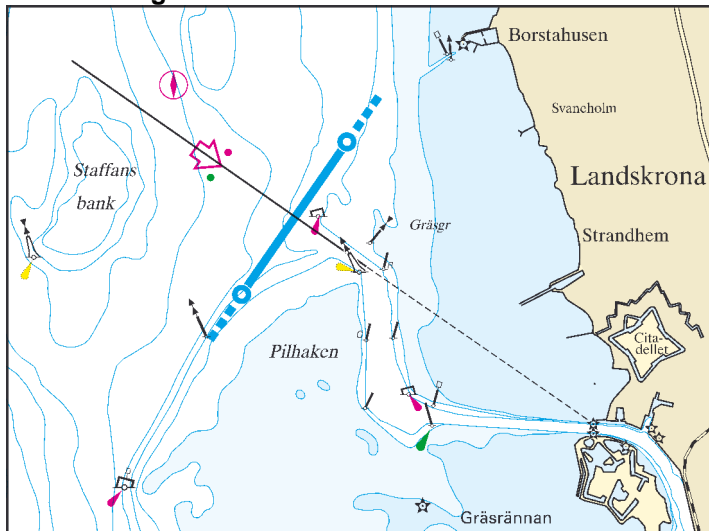
**\*Bording area**

d) Malmö roads

e) the buoy at Vikhög (3 M southeast of Pinhättan)

f) north of Pinhättan

Ma5 - Pilotage line Landskrona



**Pilotage line**

1) Landskrona 55°53,25' N 012°47,10' E 55°52,60' N 012°46,30' E

**Designated pilotage fairway**

Landskrona - Landskrona roads

**Cat.2** **Cat.3** **Bording area\***

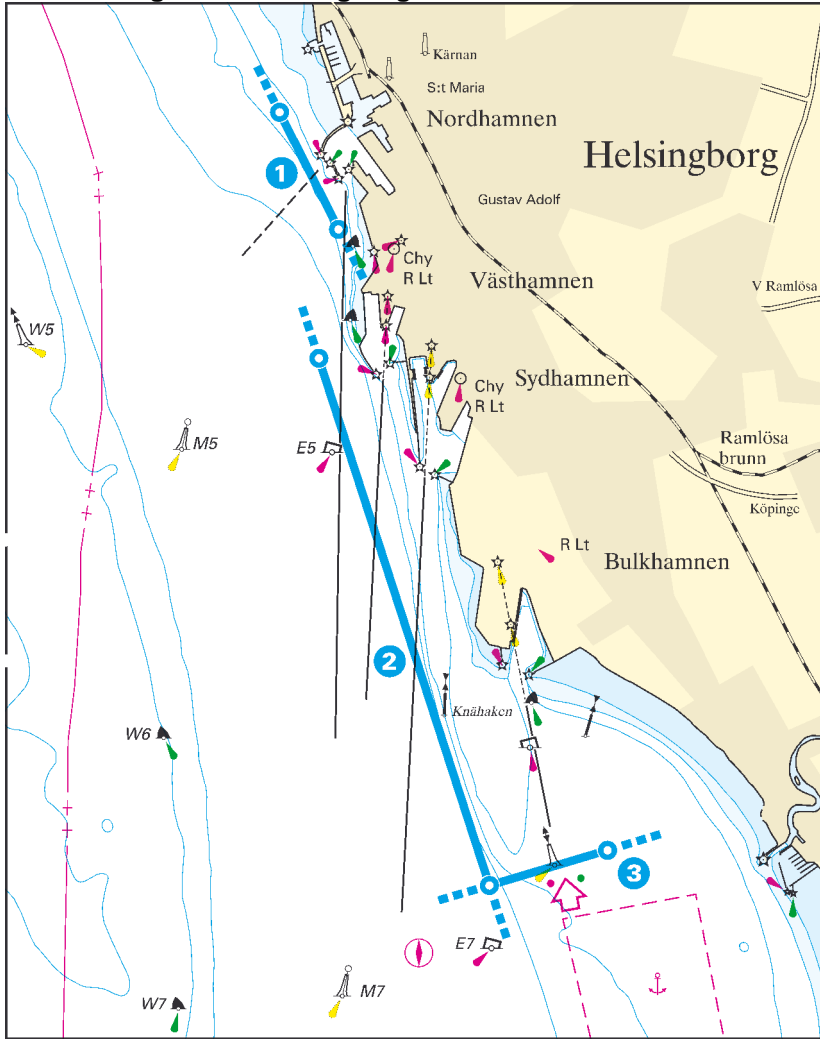
80/15/- 90/16/-

g

**\*Bording area**

g) Landskrona roads

Ma6 - Pilotage lines Helsingborg



**Pilotage line**

1) Helsingborg N	56°02,65' N 012°40,75' E	56°02,15' N 012°41,20' E
2) Helsingborg V	56°01,60' N 012°41,05' E	55°59,35' N 012°42,35' E
3) Helsingborg S	55°59,35' N 012°42,35' E	55°59,50' N 012°43,25' E

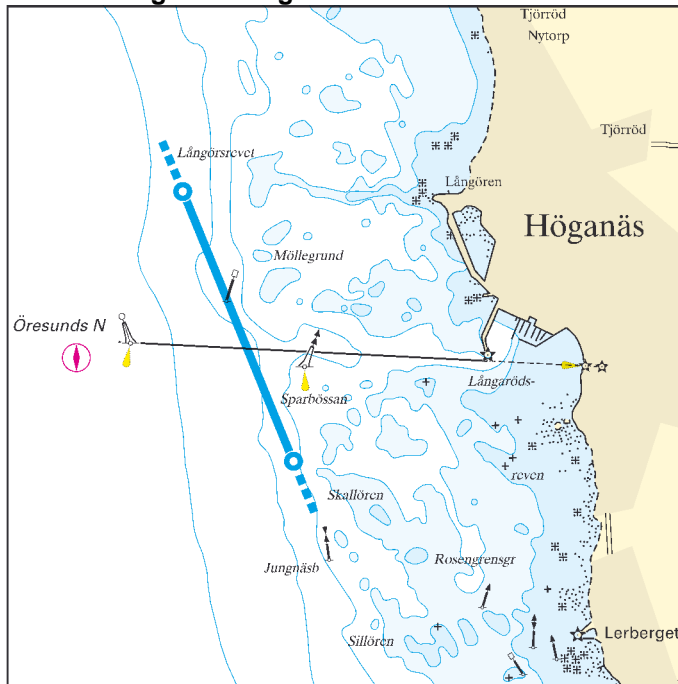
**Designated pilotage fairway**

	<b>Cat.2</b>	<b>Cat.3</b>	<b>Bording area*</b>
Helsingborg - Helsingborg roads	80/15/-	90/16/-	h,i,j

**\*Bording area**

- h) buoy M7 (3,5 M north of Ven)
- i) buoy M3 (3 M northwest of Helsingborg)
- j) buoy M1 (2 M south of Svinbådan)

Ma7 - Pilotage line Höganäs



**Pilotage line**

1) Höganäs 56°12,50' N 012°30,20' E 56°11,35' N 012°31,05' E

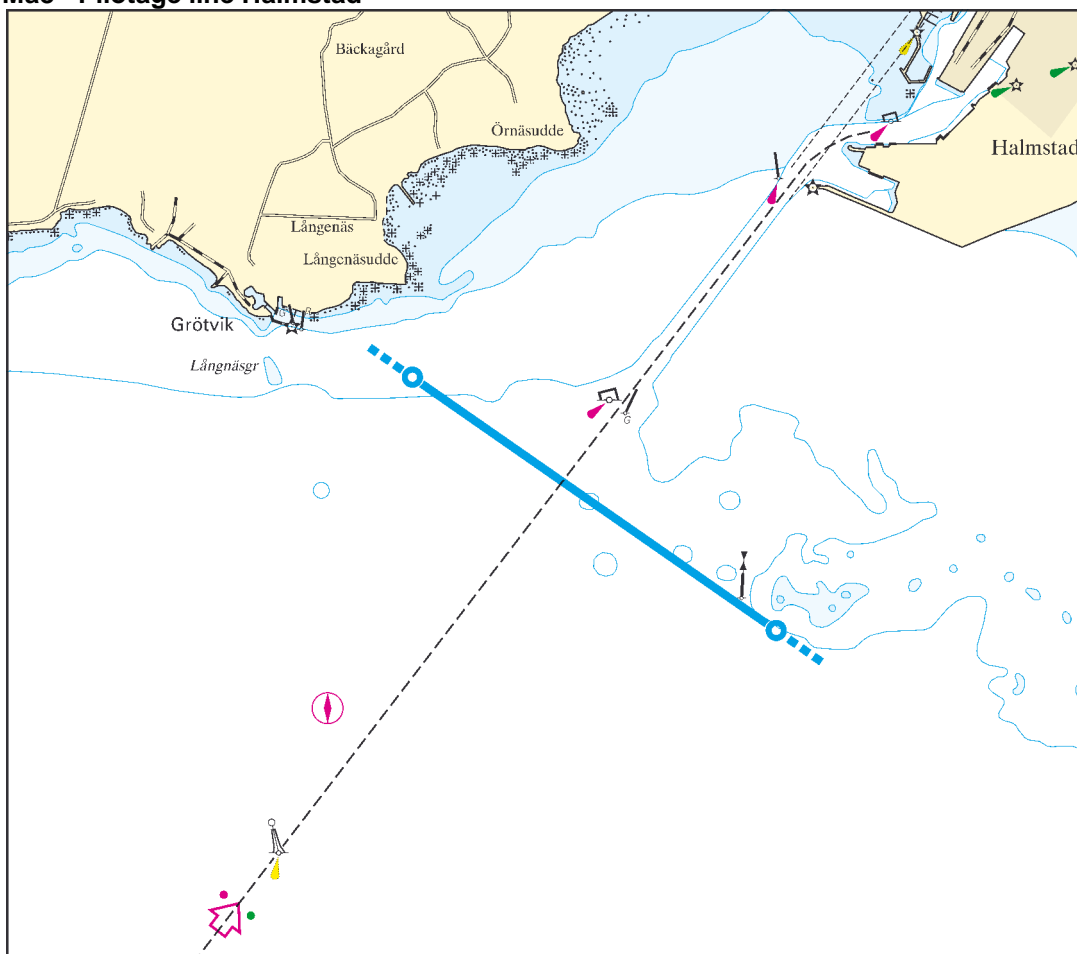
**Designated pilotage fairway**

	Cat.2	Cat.3	Bording area*
Höganäs - Höganäs roads	80/15/-	90/16/-	k

**\*Bording area**

k) Öresund N (2 M west of Höganäs)

Ma8 - Pilotage line Halmstad



**Pilotage line**

1) Halmstad

56°38,25' N 012°47,60' E 56°37,35' N 012°49,95' E

**Designated pilotage fairway**

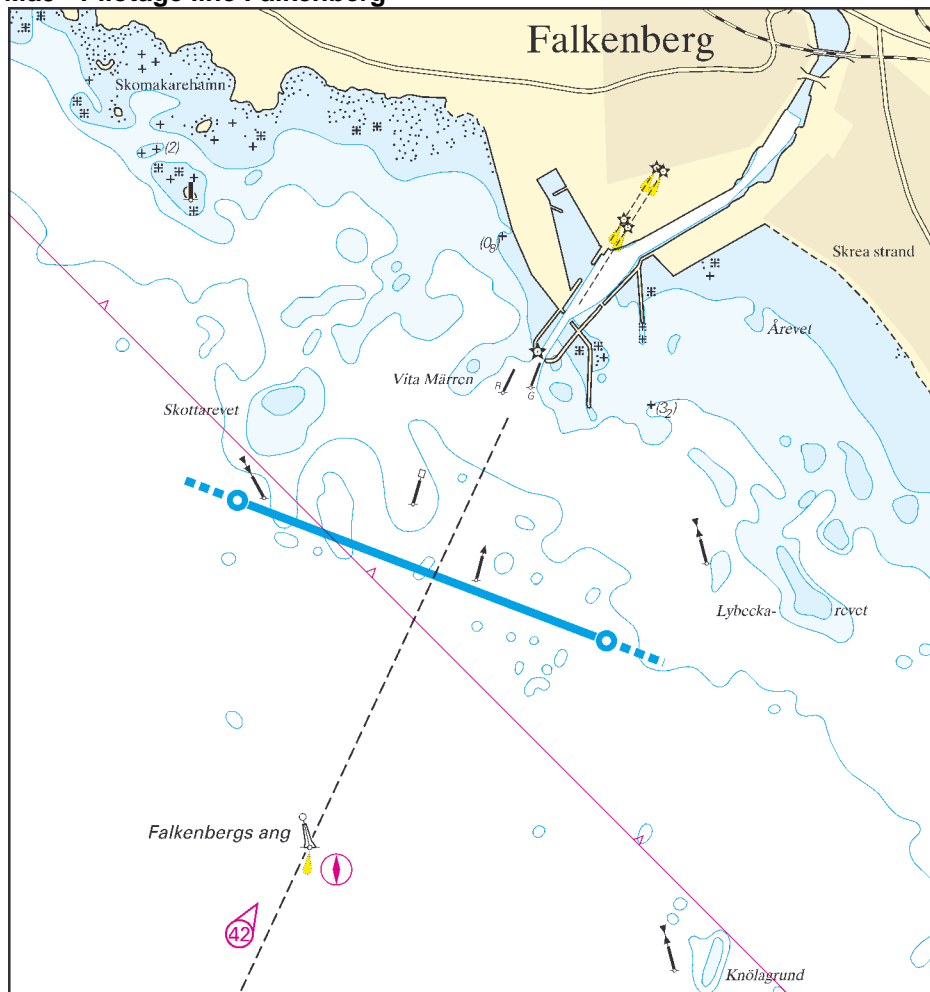
Halmstad - Halmstad roads

Cat.2	Cat.3	Bording area*
80/15/5	90/16/5,5	I

**\*Bording area**

I) at the approach buoy Halmstad roads

Ma9 - Pilotage line Falkenberg



**Pilotage line**

1) Falkenberg 56°52,40' N 012°26,00' E 56°51,90' N 012°28,40' E

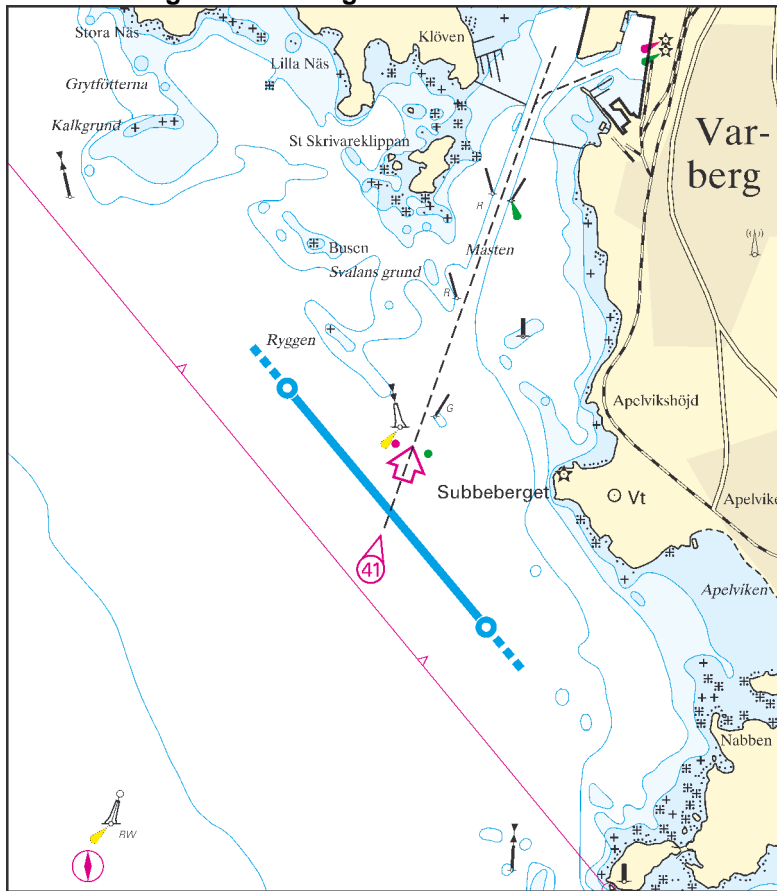
**Designated pilotage fairway**

	Cat.2	Cat.3	Bording area*
Falkenberg – Falkenberg roads	80/15/5	90/16/5,5	m

**\*Bording area**

m) at Falkenberg approach

Ma10 - Pilotage line Varberg



**Pilotage line**

1) Varberg 57°05,60' N 012°12,40' E 57°04,75' N 012°13,70' E

**Designated pilotage fairway**

Varberg - Varberg roads

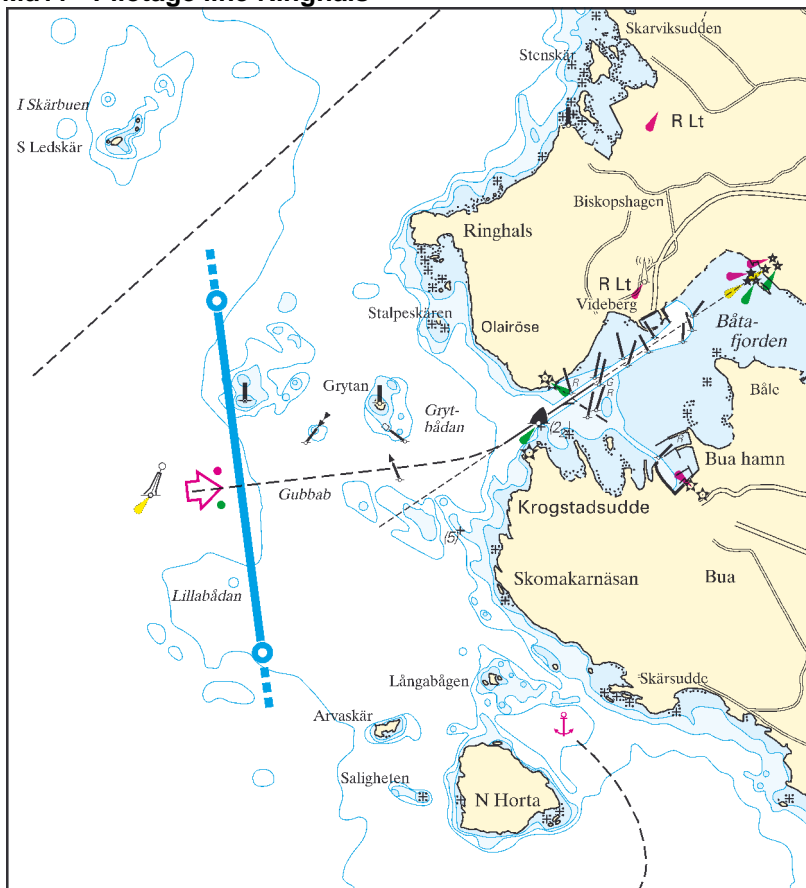
Cat.2	Cat.3	Bording area*
80/15/5	90/16/5,5	n

**\*Bording area**

n) 2 M southwest of Subbeberget light



Ma11 - Pilotage line Ringhals



**Pilotage line**

1) Ringhals 57°15,05' N 012°03,80' E 57°13,80' N 012°04,10' E

**Designated pilotage fairway**

	Cat.2	Cat.3	Bording area*
Ringhals - Varbergs roads	80/15/5	80/15/5	n

**\*Bording area**

n) 2 M southwest of Subbeberget light

## Ma12 - Designated pilotage fairways with no compulsory pilotage

Designated pilotage fairway	Bording area*
Buoy M1 - Malmö roads	d,j
Buoy M1 - Flint Channel - Trelleborg roads	b,j
Buoy M1 - Flint Channel - Flintrännen SV	c,j
Flint Channel SV - Flint Channel - Helsingborg roads	c,h,i
Flint Channel SV - Flint Channel - Malmö roads	c,d
Flint Channel SV - Trelleborg roads	c,b
Helsingborg roads - Copenhagen outer roads	h,i
Helsingborgs roads - Malmö roads	h,i,d
Landskrona roads - Copenhagen outer roads	g
Malmö roads - Copenhagen outer roads	d
Trelleborg roads - Flint Channel - Helsingborg roads	b,h,i
Trelleborg roads - Flint Channel - Malmö roads	b,d

**\*bording area**

- b) Trelleborg roads
- c) 3 M southsouthwest of the Flint Channel
- d) Malmö roads
- g) Landskrona roads
- h) buoy M7 (2,5 M north of Ven)
- i) buoy M3 (3 M northwest of Helsingborg)
- j) buoy M1 (2 M south of Svinbådan)