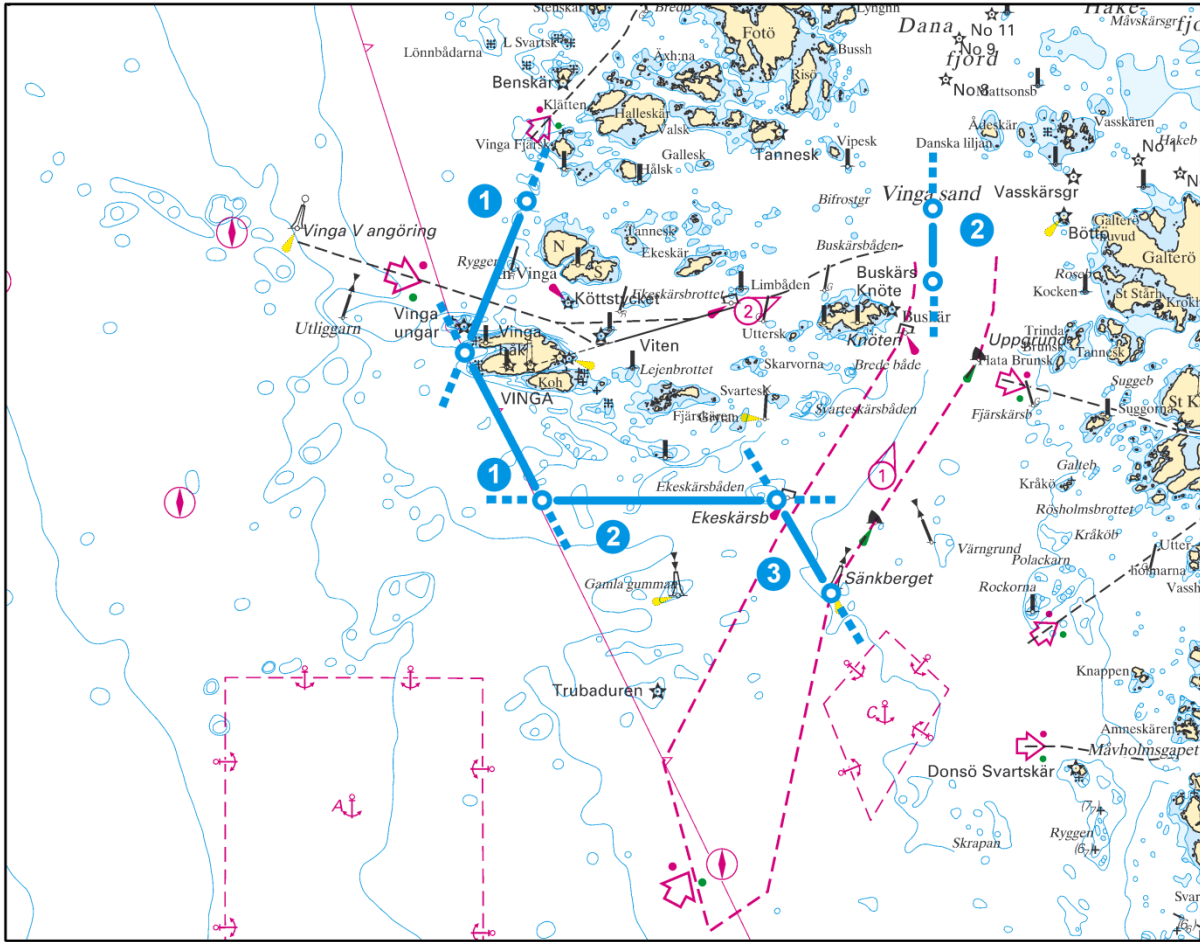


**Designated pilotage fairways** **CHART**

Gothenburg: Skandiahamnen (including berths west of it) - Böttöleden (South channel) / Torshamnsleden (North channel) - Trubaduren.....	<b>Go1</b>
Gothenburg - north Vinga - west Vinga .....	<b>Go1</b>
Danafjorden (anchorage area) - Trubaduren .....	<b>Go1</b>
Rivöfjorden (anchorage area) - Trubaduren.....	<b>Go1</b>
Gothenburg: Frihamnen (including berths west of Frihamnspiren to Skandiahamnen) - Rivöfjorden .....	<b>Go2</b>
Gothenburg: the mouth of Lärjeå (including berths west of the mouth of Lärjeå to Frihamnspiren) - Tångudden .....	<b>Go3</b>

Go1 - Pilotage lines Trubaduren, Vinga



**Pilotage line**

1) Trubaduren V	57°38,00' N	011°35,50' E	57°37,00' N	011°36,50' E
2) Trubaduren S	57°37,00' N	011°36,50' E	57°37,00' N	011°39,50' E
3) Trubaduren O	57°37,00' N	011°39,50' E	57°36,35' N	011°40,20' E

**Designated pilotage fairway**

	Cat.2	Cat.3	Bording area*
Gothenburg: Skandiahamnen (including berths west of it) - Böttöleden (South channel) / Torshamnsleden (North channel) - Trubaduren	100/17/-	110/19/-	a,b,c,d
Danafjorden (anchorage area) - Trubaduren	100/17/-	110/19/-	a,b,c,d
Rivöfjorden (anchorage area) - Trubaduren	100/17/-	110/19/-	a,b,c,d

**Pilotage line**

1) Vinga V	57°39,05' N	011°36,30' E	57°38,00' N	011°35,50' E
2) Vinga O	57°39,00' N	011°41,50' E	57°38,50' N	011°41,50' E

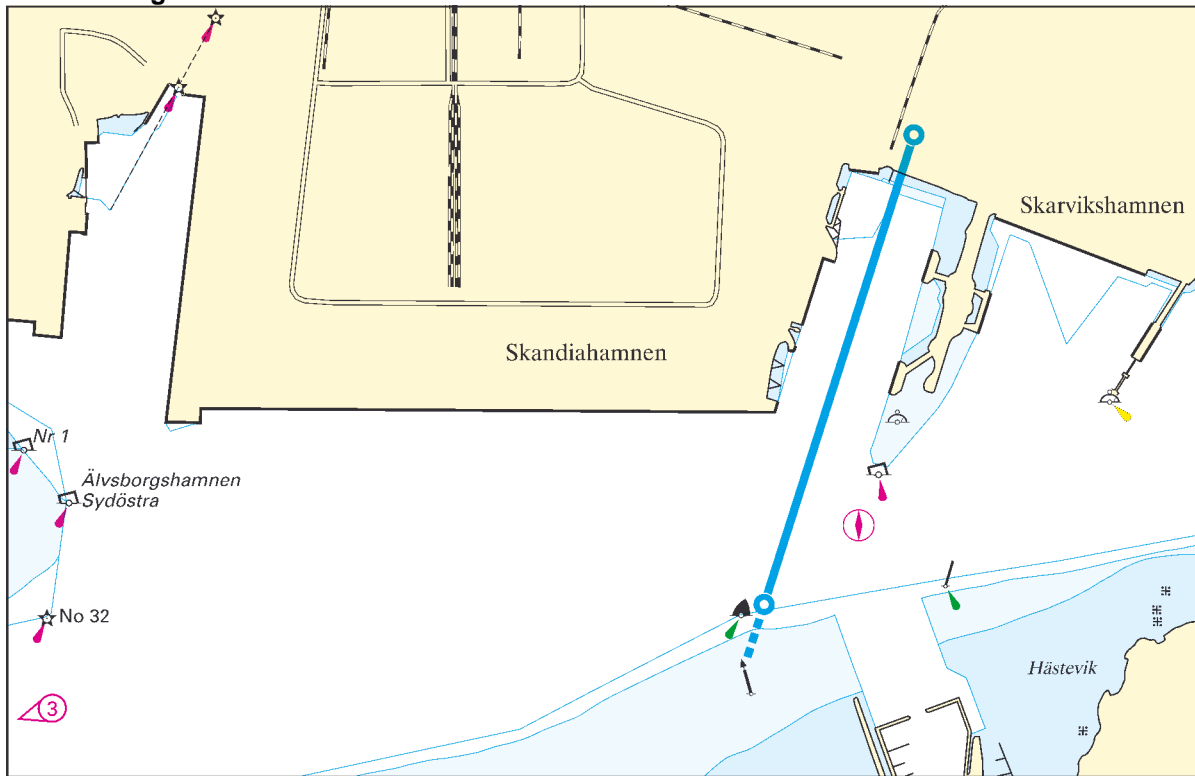
**Designated pilotage fairway**

	Cat.2	Cat.3	Bording area*
Gothenburg - north Vinga - west Vinga	70/14/4,5	70/14/4,5	a,b,c,d

**\*Bording area**

- a) 1,2 M southsoutheast of Trubaduren (no 1)
- b) 2,5 M westsouthwest of Vinga light (no 2)
- c) 2,1 M westnorthwest of Vinga light (no 3)
- d) 3,5 M westnorthwest of Vinga light (VLCC)

Go2 - Pilotage line Skandiahammen



**Pilotage line**

1) Skandiahammen 57°41,60' N 011°52,23' E 57°41,10' N 011°51,93' E

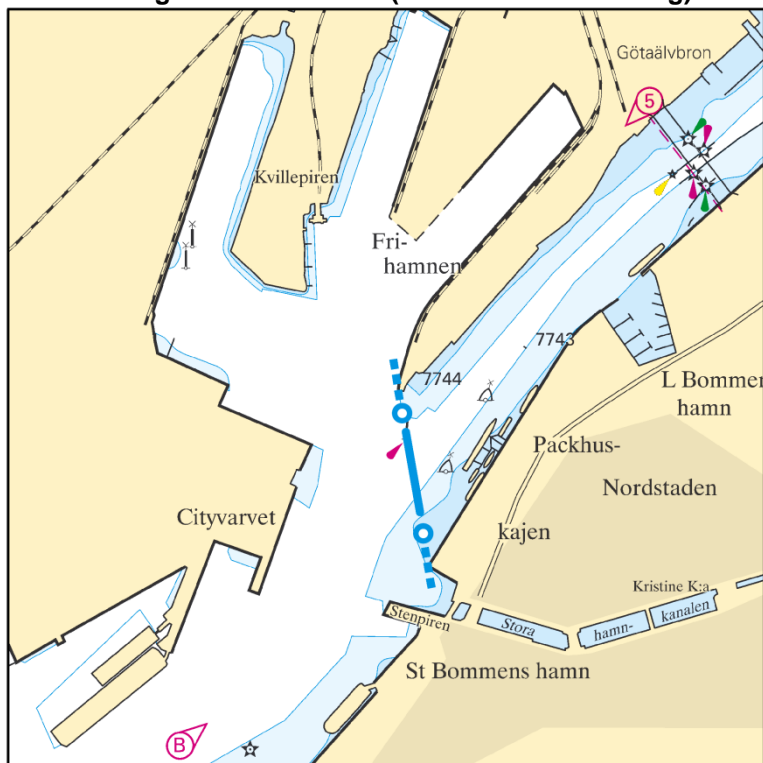
**Designated pilotage fairway**

	Cat.2	Cat.3	Bording area*
Gothenburg: Frihamnen (including berths west of Frihamnspiren to Skandiahammen) - Rivöfjorden	80/15/-	90/16/-	f

**\*Bording area**

f) Rivöfjorden

**Go3 - Pilotage line Frihamnen (Pilot Area Gothenburg)**



**Pilotage line**

1) Frihamnen (LO  
Gothenburg)

57°42,60' N 011°57,43' E 57°42,47' N 011°57,47' E

**Designated pilotage fairway**

Gothenburg: the mouth of Lärjeå (including berths west of the mouth of Lärjeå to Frihamnspiren) - Tångudden

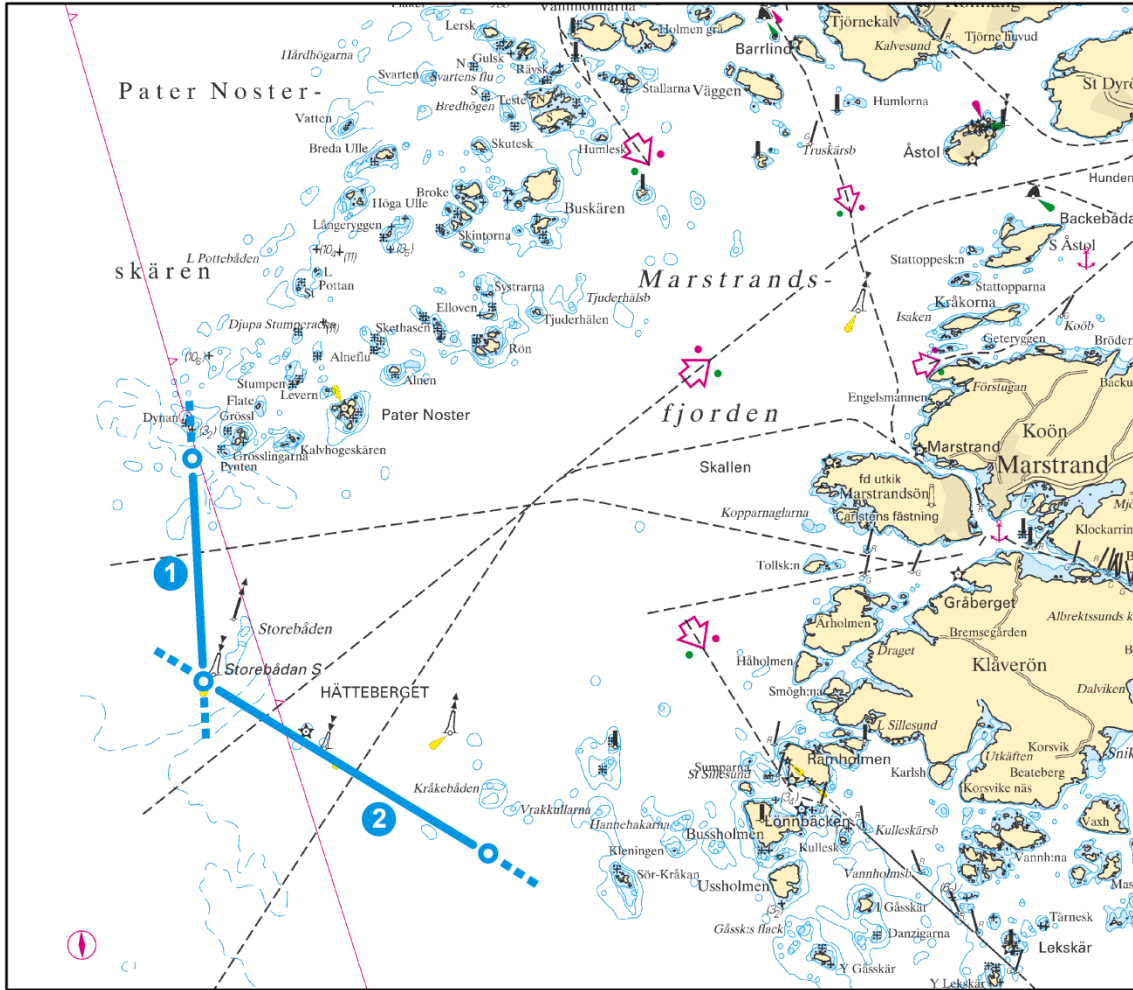
Cat.2	Cat.3	Bording area*
60/9/4	60/9/4	e

**\*Bording area**

e) Tångudden

<b>Designated pilotage fairways</b>	<b>CHART</b>
Marstrand - Hätteberget .....	<b>Ms1</b>
Wallhamn - Hätteberget.....	<b>Ms1</b>
Stenungsund - Hätteberget .....	<b>Ms1</b>
Uddevalla - Hätteberget.....	<b>Ms1</b>
Marstrand - inshore route - Trubaduren .....	<b>Ms1</b>
Rönnäng/Ängholmen - Hätteberget.....	<b>Ms2</b>
Skärhamn - Hätteberget .....	<b>Ms2</b>
Uddevalla - Malö strömmar - Brofjorden approach .....	<b>Ms3</b>
Lysekil - Brofjorden approach.....	<b>Ms4</b>
Brofjorden oil terminal - Brofjorden approach.....	<b>Ms4</b>
Kungshamn - Brofjorden approach .....	<b>Ms4</b>
Brofjorden approach - the Swedish borders at North-Hällsö.....	<b>Ms5</b>
Strömstad - Brofjorden approach .....	<b>Ms6</b>
Strömstad - Ramskär.....	<b>Ms6</b>
Krokstrand - Ramskär.....	<b>Ms6</b>
Strömstad - the Swedish borders at Nord-Hällsö .....	<b>Ms7</b>
Krokstrand - the Swedish borders at Nord-Hällsö .....	<b>Ms7</b>
Designated pilotage fairways subject to compulsory pilotage from the port of departure to the port of destination .....	<b>Ms8</b>

Ms1 - Pilotage lines Hätteberget



**Pilotage line**

1) Hätteberget O	57°53,45' N	011°26,20' E	57°52,10' N	011°26,20' E
2) Hätteberget S	57°52,10' N	011°26,20' E	57°51,05' N	011°29,60' E

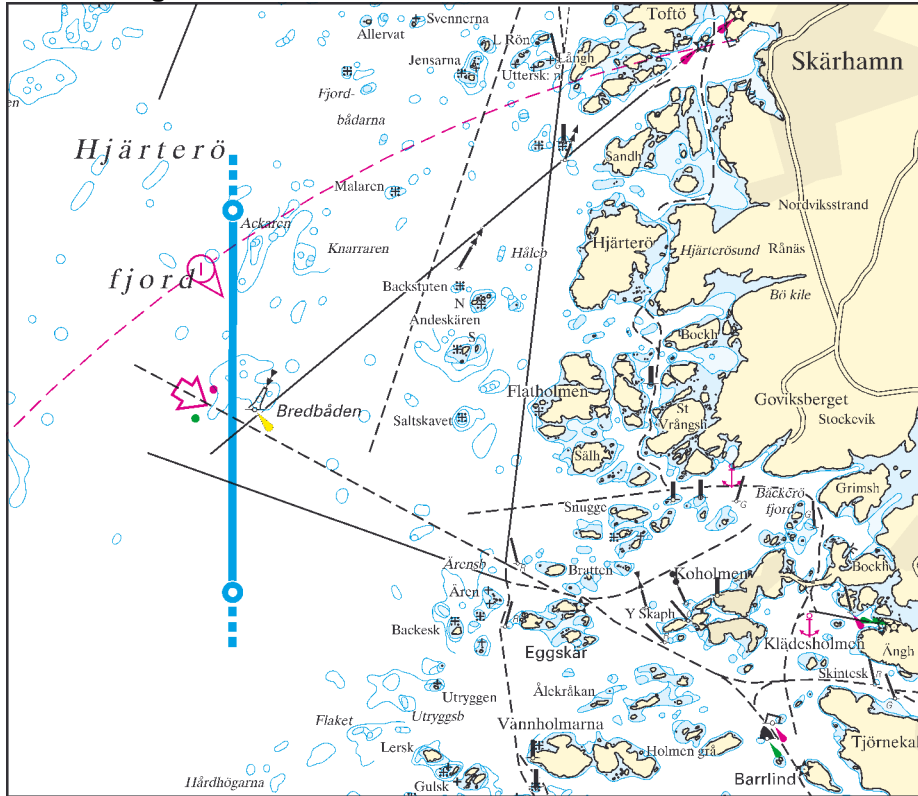
**Designated pilotage fairway**

	Cat.2	Cat.3	Bording area*
Wallhamn - Hätteberget	80/15/-	90/16/-	a
Stenungsund - Hätteberget	80/15/-	90/16/-	a
Uddevalla - Hätteberget	80/15/-	90/16/-	a
Marstrand - Hätteberget	80/15/-	90/16/-	a
Marstrand – inshore route - Trubaduren	70/14/4,5	70/14/4,5	a

**\*Bording area**

a) at Hätteberget

**Ms2 - Pilotage line Skärhamn**



**Pilotage line**

1) Hätteberget N

57°58,75' N 011°27,75' E 57°56,85' N 011°27,75' E

**Designated pilotage fairway**

Rönnäng/Ängsholmen- Hätteberget

**Cat.2**

**Cat.3**

**Bording area\***

70/14/4,5

70/14/4,5

a

Skärhamn - Hätteberget

80/15/-

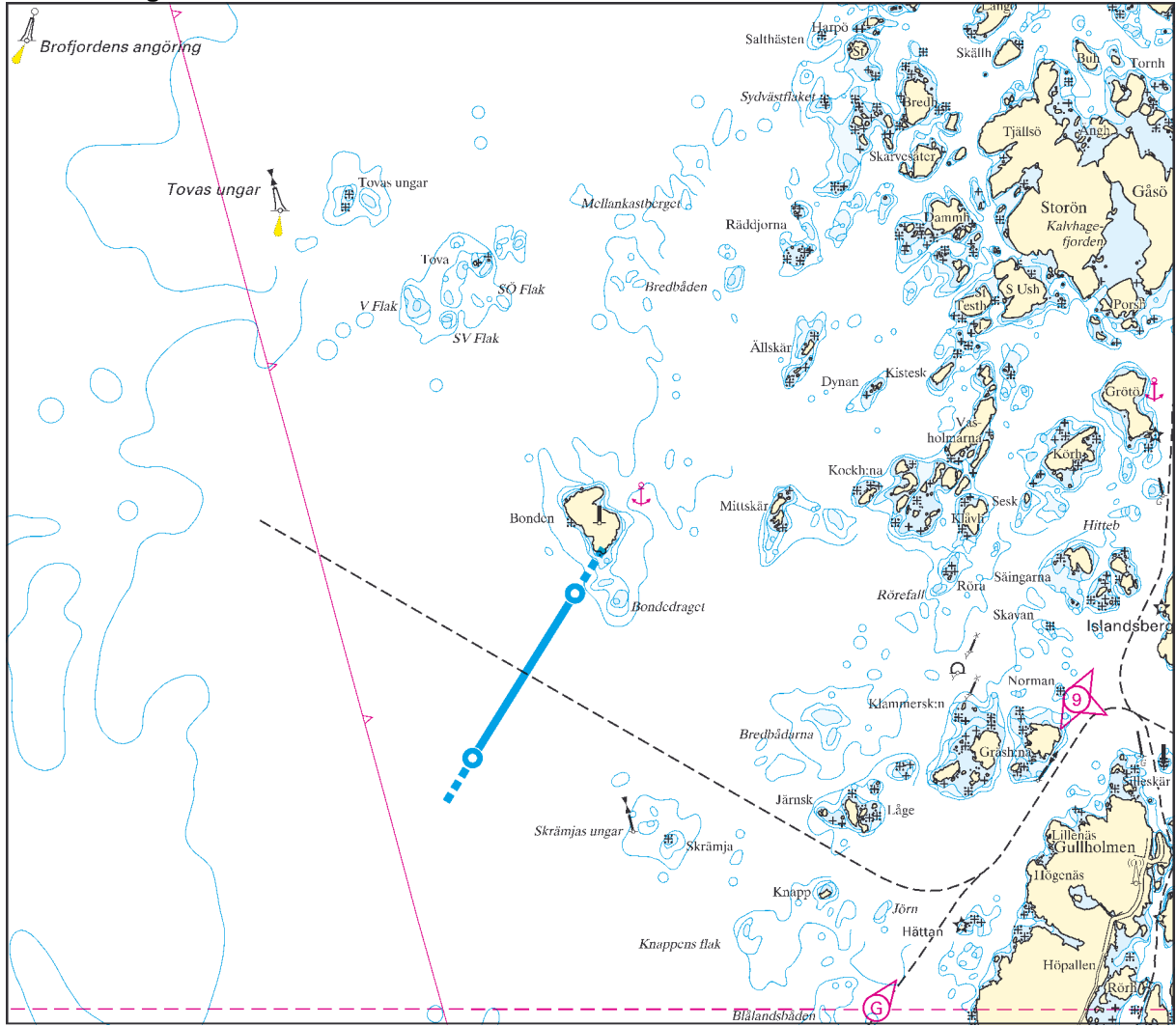
90/16/-

a

**\*Bording area**

a) at Hätteberget

Ms3 - Pilotage line Bonden



**Pilotage line**

1) Bonden 58°12,15' N 011°18,60' E 58°11,30' N 011°17,60' E

**Designated pilotage fairway**

Uddevalla - Malö strömmar - Brofjorden approach

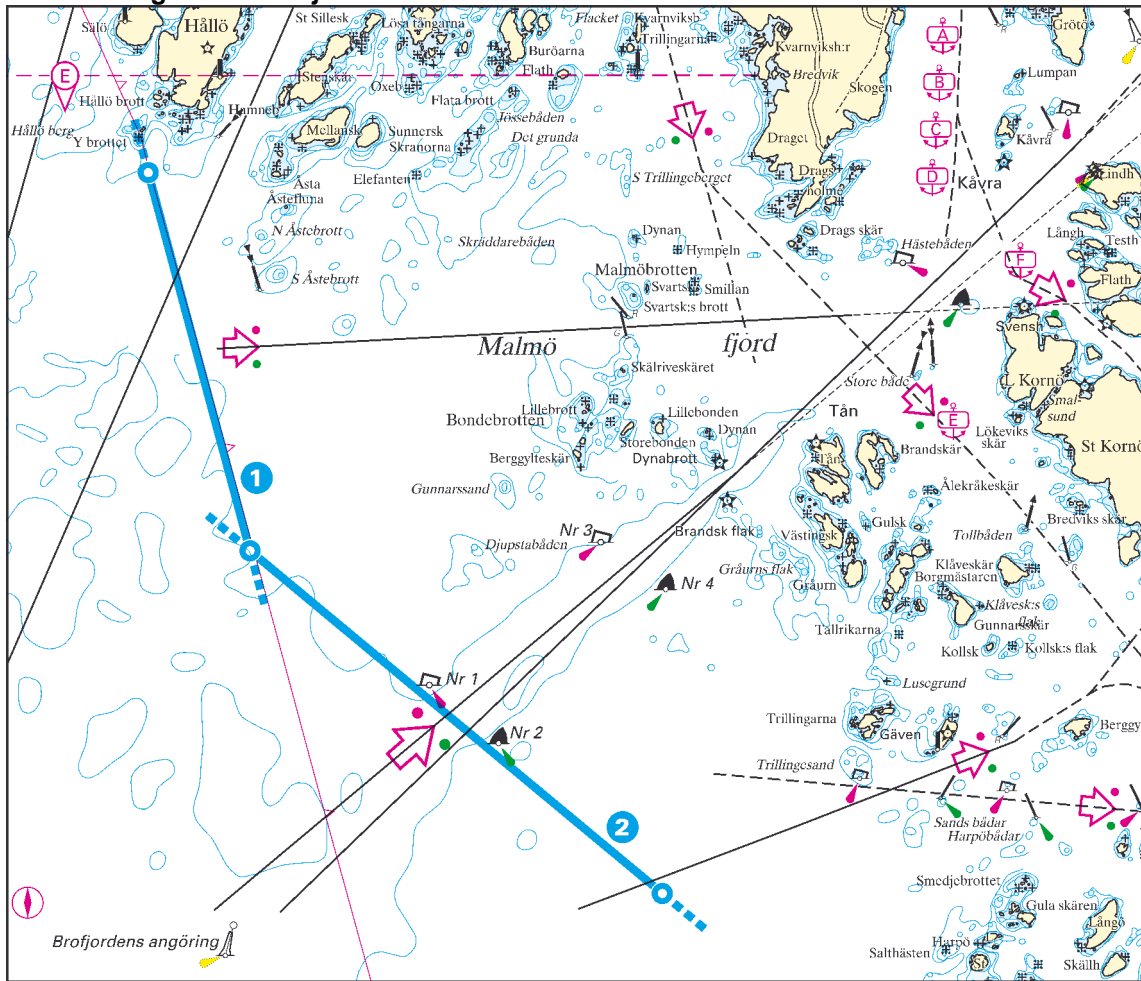
Cat.2	Cat.3	Bording area*
70/14/4,5	70/14/4,5	b

**\*Bording area**

b) at Brofjorden approach buoy



M54 - Pilotage lines Brofjorden



**Pilotage line**

1) Brofjorden N	58°19,45' N 011°12,40' E	58°17,30' N 011°13,50' E
2) Brofjorden S	58°17,30' N 011°13,50' E	58°15,35' N 011°17,95' E

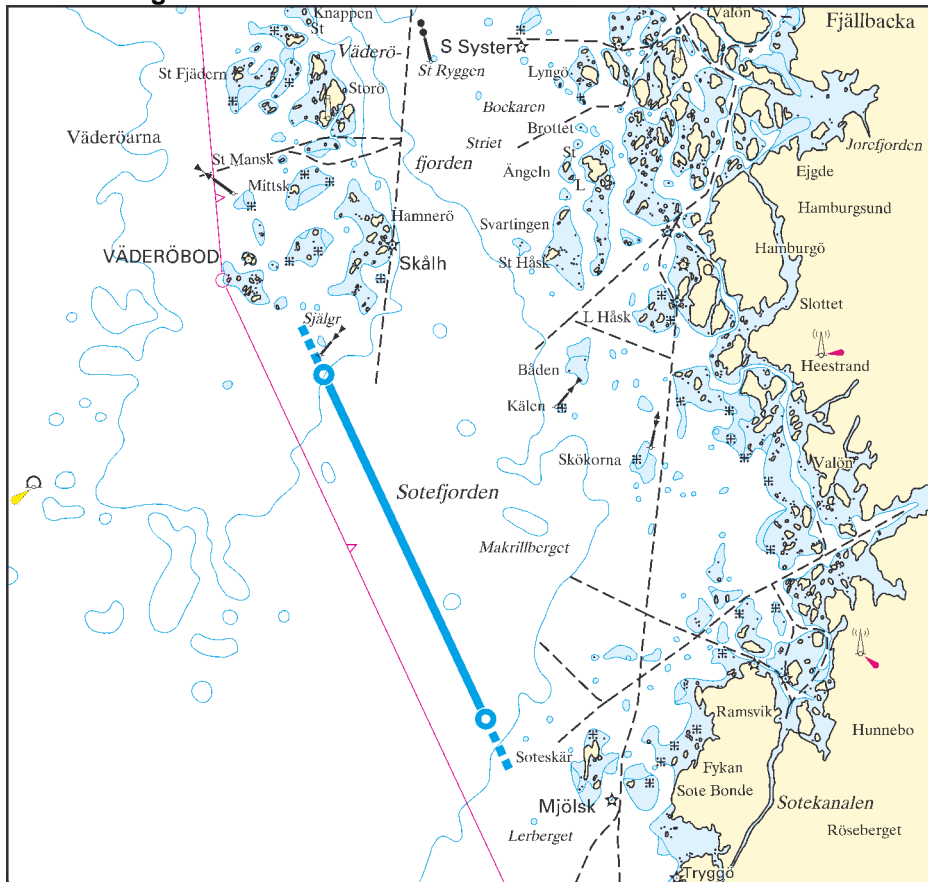
**Designated pilotage fairway**

	Cat.2	Cat.3	Bording area*
Lysekil - Brofjorden approach	80/15/-	90/16/-	a,c
Brofjorden - Brofjorden approach	90/16/-	90/16/-	a,c
Kungshamn - Brofjordens approach	80/15/-	90/16/-	c

**\*Bording area**

- a) at Brofjorden approach buoy
- c) 3 M southwest of Brofjorden approach buoy

**Ms5 - Pilotage line Väderöbod**



**Pilotage line**

1) Väderöbod 58°30,90' N 011°03,80' E 58°26,00' N 011°08,20' E

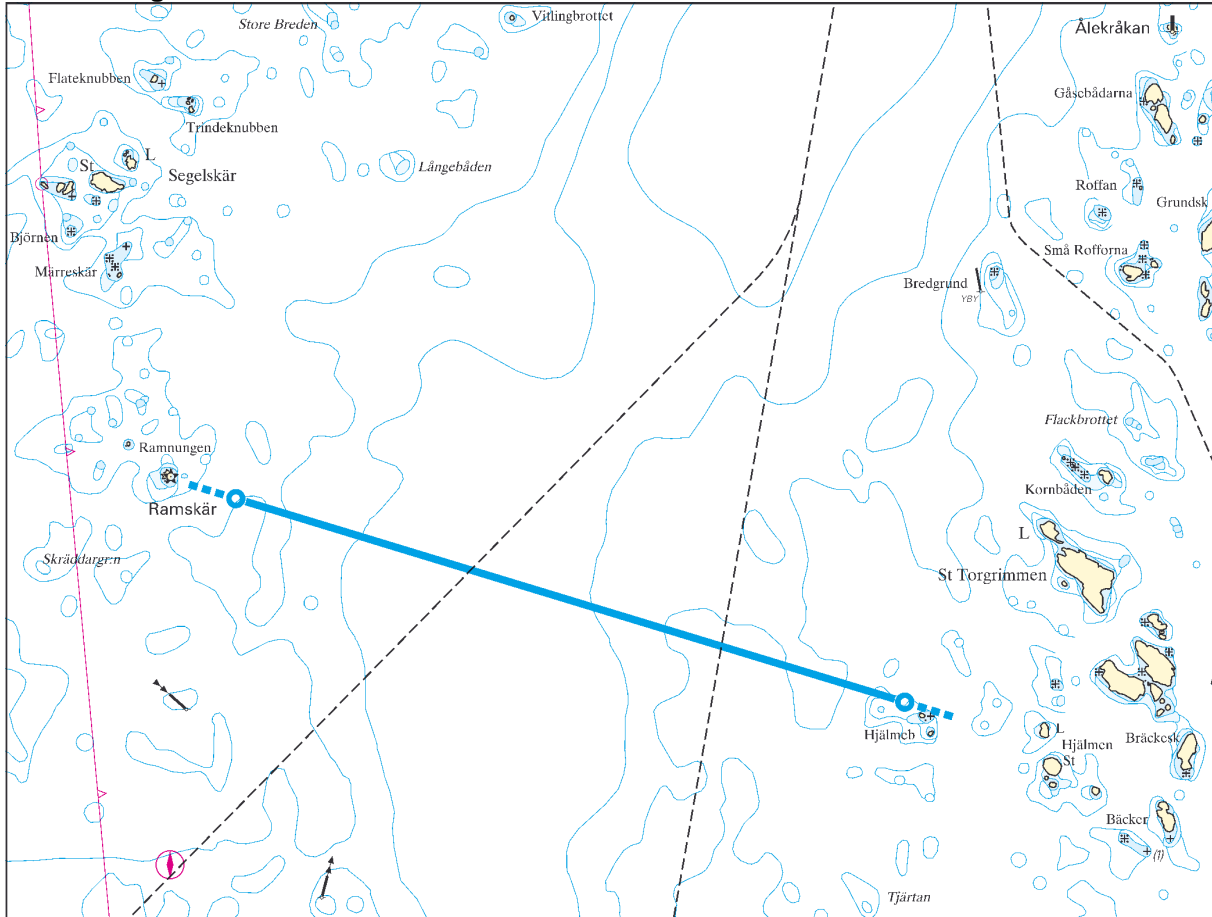
**Designated pilotage fairway**

	Cat.2	Cat.3	Bording area*
Brofjorden approach - Swedish borders at Nord-Hällsö	80/15/-	90/16/-	b,e
Strömstad - Brofjorden approach	80/15/-	90/16/-	b

**\*Bording area**

- b) at Brofjorden approach buoy
- e) the Swedish borders at Nord-Hällsö

**Ms6 - Pilotage line Ramskär**



**Pilotage line**

1) Ramskär 58°45,40' N 011°00,05' E 58°44,60' N 011°05,10' E

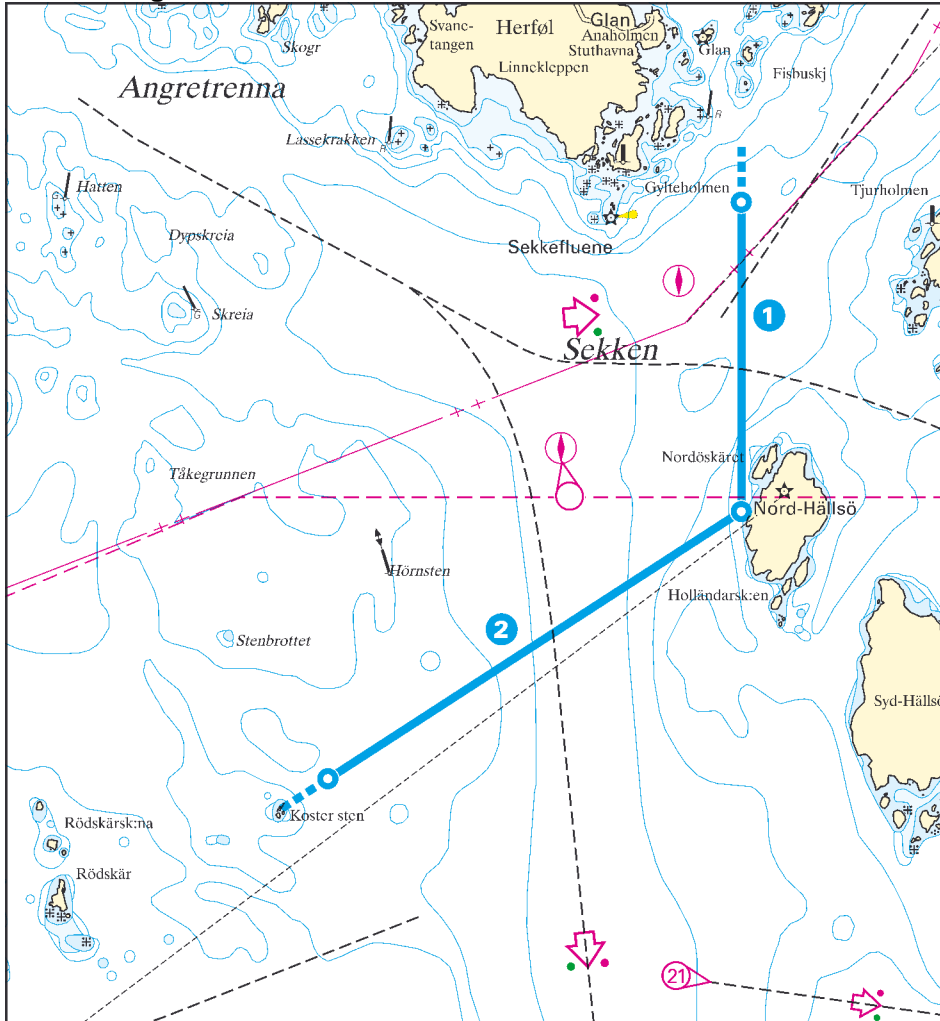
**Designated pilotage fairway**

	Cat.2	Cat.3	Bording area*
Brofjorden approach - the Swedish borders at Nord-Hällsö	80/15/-	90/16/-	b,j
Strömstad - Brofjorden approach	80/15/-	90/16/-	b
Strömstad - Ramskär	80/15/-	90/16/-	d
Krokstrand - Ramskär	80/15/-	90/16/-	d

**\*Bording area**

- b) at Brofjorden approach buoy
- d) 1,5 M south of Ramskär
- e) the Swedish borders at Nord-Hällsö

Ms7 - Pilotage lines Swedish border at Nord-Hällsö



**Pilotage line**

1) Riksgränsen O	58°59,05' N 011°04,35' E	58°57,95' N 011°04,35' E
------------------	--------------------------	--------------------------

**Designated pilotage fairway**

	Cat.2	Cat.3	Bording area**
Krokstrand - the Swedish border at Nord-Hällsö	80/15/-	90/16/-	e

**Pilotage line**

2) Riksgränsen S	58°57,95' N 011°04,35' E	58°57,00' N 011°01,50' E
------------------	--------------------------	--------------------------

**Designated pilotage fairway**

	Cat.2	Cat.3	Bording area**
Brofjorden approach - the Swedish borders at Nord-Hällsö	80/15/-	90/16/-	b,e
Strömstad - the Swedish border s at Nord-Hällsö	80/15/-	90/16/-	e

**\*\*Bording area**

- b) at Brofjorden approach buoy
- e) the Swedish borders at Nord-Hällsö

**Ms8 - Designated pilotage fairways subject to compulsory pilotage from the port of departure to the port of destination**

Limits for compulsory pilotage in f the below listed pilotage fairway:

<b>Cat.2</b>	<b>cat.3</b>
70/14/4,5	70/14/4,5

Uddevalla – Malö strömmar - Lysekil