



Choose the right
vehicle lighting

A vehicle must show white or yellow lights to the front.

A vehicle must* have red lights to the rear. White lights at the rear of the vehicle may only be used when reversing or when work is being carried out that requires such light.

Information in this brochure is based on

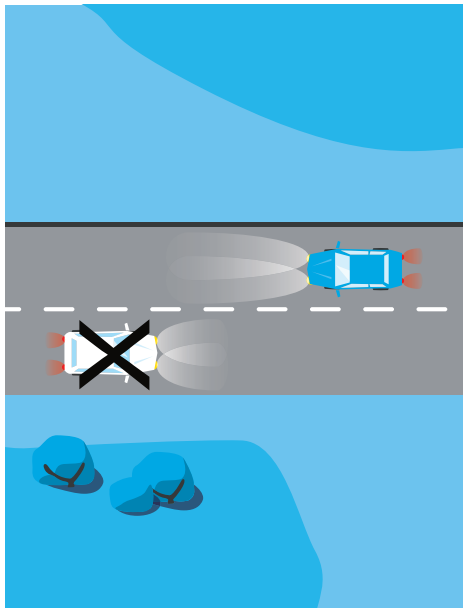
- Trafikförordningen (1998:1276)
- Vägmärkesförordningen (2007:90)
- Förordning om vägtrafikdefinitioner (2001:651)
- Transportstyrelsens föreskrifter och allmänna råd om bilar m.m. (TSFS 2013:63)
- Transportstyrelsens föreskrifter om bilar m.m. (TSFS 2010:2)
- Transportstyrelsens föreskrifter om cyklar m.m. (TSFS 2009:31)
- Transportstyrelsens föreskrifter om varningsanordningar m.m. (TSFS 2009:83)

Please note that illustrations in this brochure are simplified.

* Cars from 2009 can be equipped with daytime running lights without the need for tail lights to be on.

Daylight

Dipped beam • Daytime running lights • Front fog lights

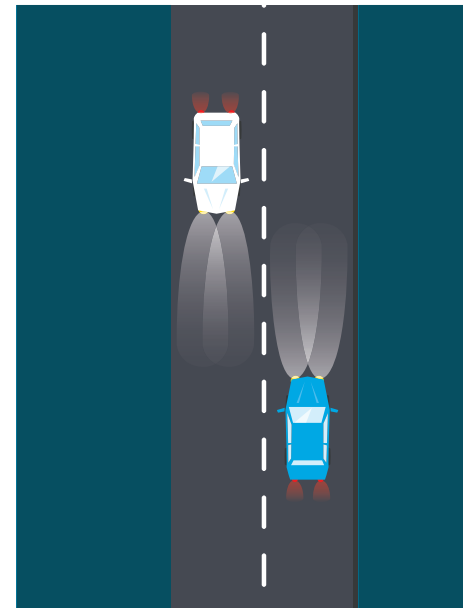


- Dipped beam must be used in daylight. You can use daytime running lights or front fog lights instead, but you may not use these lights simultaneously.

Other lighting is daytime running lights, front fog lights or low-voltage dipped beams.

Dawn, dusk or darkness

Dipped beam • Main beam



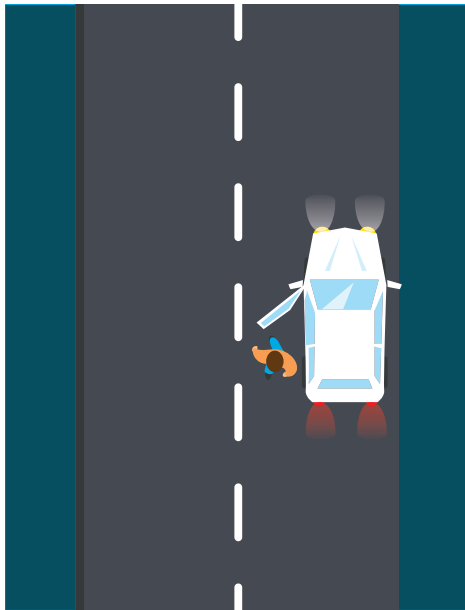
- At dawn, dusk or darkness you must use main beam or dipped beam.

If you use main beam then you must switch to dipped beam when there is risk that the driver in front of you or an approaching driver could be dazzled.

Other lighting must not be used.

Dawn, dusk or darkness

Parking lights

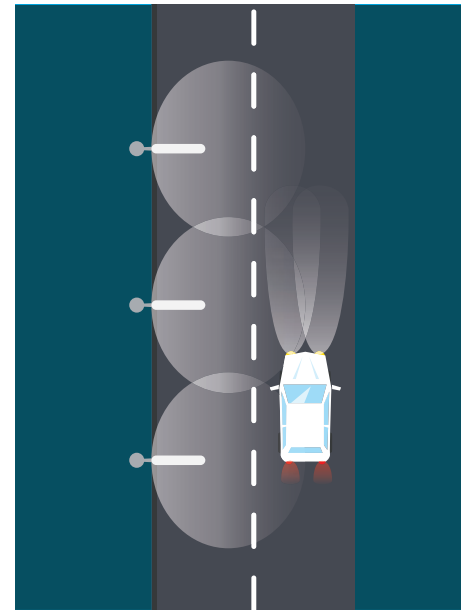


- When you stop or park on a road at dawn, dusk or in the dark, you must display parking lights.

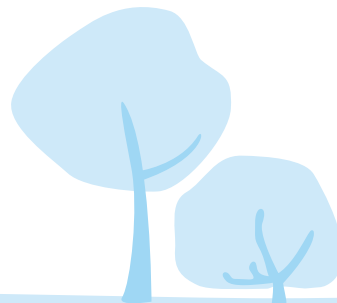
Two-wheel bicycles, mopeds or motorcycles that stop or park close to the curb do not need to display parking lights.

On road with sufficient lighting

Dipped beam • Parking lights

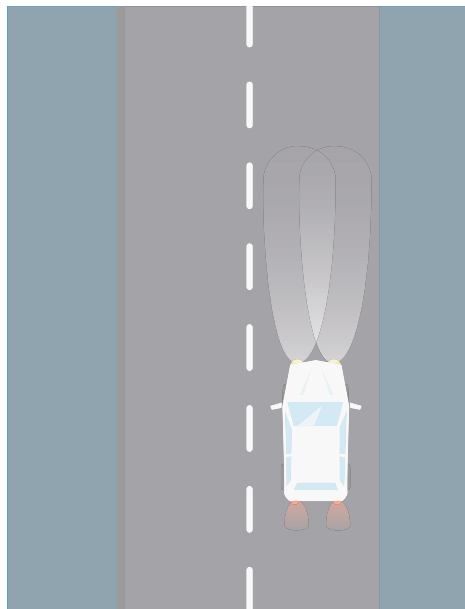


- On roads with sufficient lighting you must use dipped beam. Parking lights or other lights are not adequate.
- When you park on a road with sufficient lighting you are not required to display parking lights.



Fog, heavy rain or snow

Dipped beam • Front fog lights
Main beams • Rear fog lights



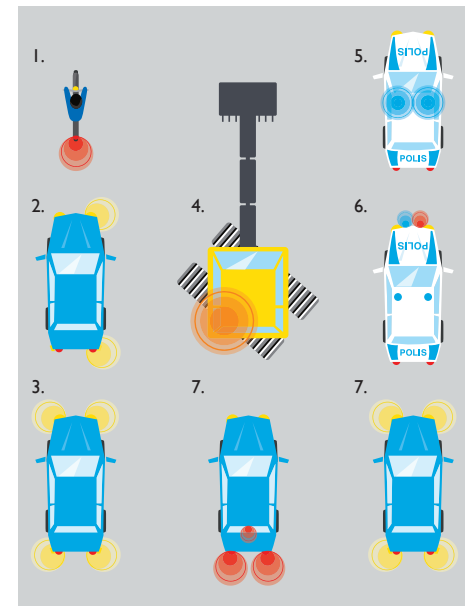
- In low visibility weather conditions such as fog, heavy rain or snow you must use dipped beam or front fog lights. Dipped beam and front fog lights must not be used at the same time.

At dawn, dusk and in darkness you may also use main beam but this often reduces visibility.

- You may use rear fog lights if the visibility is seriously reduced, but only if this can be done without dazzling drivers behind your vehicle.

All conditions

Flashing lights

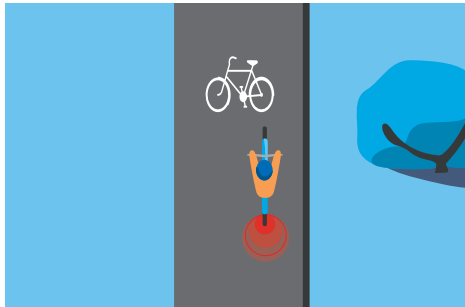


- There are seven types of flashing lights that may be used on vehicles.

1. Tail light on a bicycle
2. Direction indicator signals
3. Hazard warning lights
4. Warning beacons
5. Special warning systems
6. Special stopping lights
7. Emergency stop signal

No other flashing lights may be used.



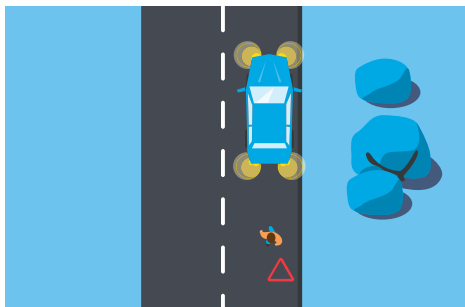


- **The tail light on a bicycle** must emit an uninterrupted red or flashing light. If the tail light is a flashing light, the number of flashes must be at least 200 per minute.

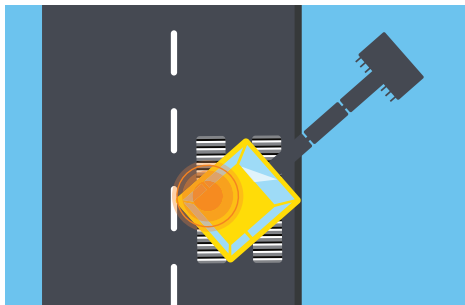


- **Use direction indicator signals** when you start from the curb, turn, change lane or change vehicle position sideways.

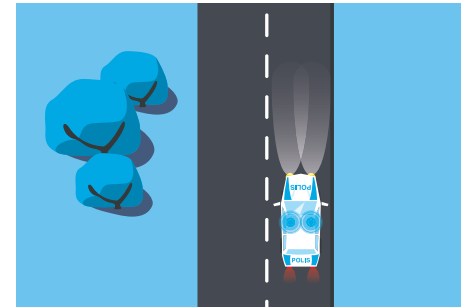
Indicate in time so other road users see what you are about to do!



- **Hazard warning lights** may be used if a vehicle is stationary as a result of a breakdown, an accident or some similar incident and is temporarily obstructing traffic. If you are outside a built-up area then you must normally place a warning triangle on the road.

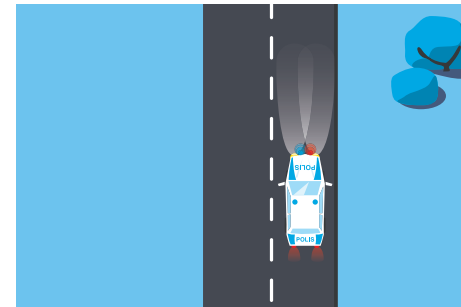


- **Warning beacons** with amber lights are used by road maintenance vehicles. If you see a vehicle with a flashing warning beacon then you must slow down and be prepared to stop.



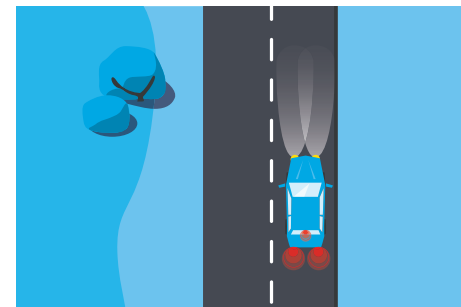
- Priority vehicles use a special **warnings system** comprising siren and blue flashing or rotating lights.

When you are warned of the approach of a priority vehicle you must leave room for it to pass.



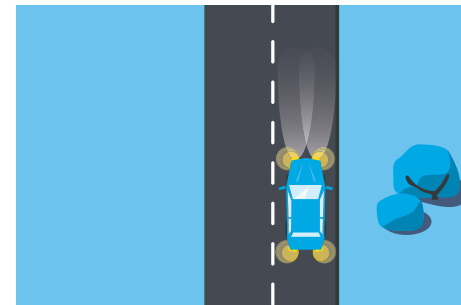
- **Special stopping lights** with blue and red lights can be used by the police.

If you see a vehicle behind you displaying this signal you must stop close to the curb in front of the police vehicle.



- **The emergency stop** signal is activated automatically when you brake hard. Flashing brake lights or hazard warning lights are used.

This feature is found in some cars and is activated when the speed before braking hard is 50 km/h or higher.



This brochure is a part of a series providing information about some of the road traffic regulations in Sweden.

Included in the series are

- Driving in a roundabout
- Stopping and parking
- Pedestrian crossings
- Choose the right vehicle lighting
- Bicycle passages and bicycle crossings

You'll find more information on our website, transportstyrelsen.se



transportstyrelsen.se
telephone +46 (0)771 503 503